

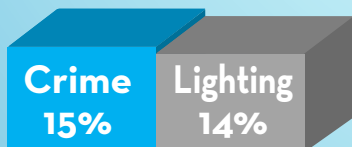
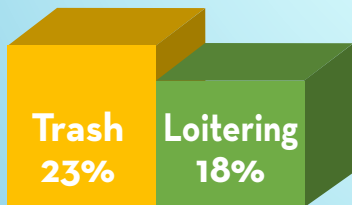
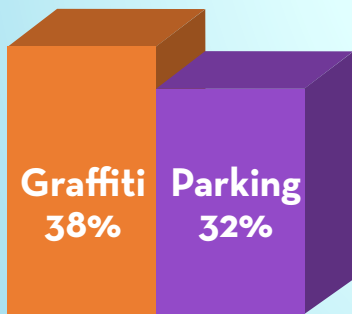
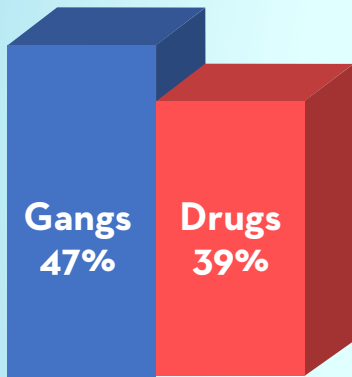
Neighborhood Improvement Committee

Phase 1: ENGAGE - Mobile Food Pantry - Survey Results

Event Participation Statistics



Challenges



Areas of Focus

1 \$

INCREASE access to available resources and introduce new programs into areas where they are lacking

2

PARTNER with building owners/landlords to address code/building violations to increase quality of life

3

ASSESS the current parking/traffic situation and come up with ideas to address the concern

4

EMPOWER the community to take ownership of the neighborhood and utilize currently available resources

For more information, please contact Nate Robbins at:
nater@garden-grove.org • (714)741-5206
<http://www.ci.garden-grove.ca.us/commdev/neighborhoodimprovement>

Neighborhood Improvement Committee - 3 Phase Approach



PHASE 1

ENGAGE (Nov '16 - Mar '17)

Forging a partnership with residents of the community

- Owner/ Landlord Meeting
- Mobile Pantry/ Survey Event
- Analyze survey data and formulate plan

PHASE 2

ENHANCE (Apr '16 - Jul '17)

Using City resources and private partnerships to improve living conditions by bring the neighborhood up to code

- Neighborhood Watch 101
- Educate and empower
- Code Enforcement Support
- Building Inspection Support
- PD/ Gang Sweep
- Dumpster Day/ Living Springs Clean-up Day

PHASE 3

EMPOWER (Jul '17 & beyond)

Asset Based Community Development

- CDBG Funds Available
- Social Services/ Programming
- Small Business Assistance Program
- CalHOME Manufactured Home Rehab/ FTHB
- Resource Center

For more information, please contact Nate Robbins at:

nater@garden-grove.org • (714)741-5206

<http://www.ci.garden-grove.ca.us/>

commdev/neighborhoodimprovement