

City of Garden Grove
WEEKLY CITY MANAGER'S MEMO
April 29, 2021

TO: Honorable Mayor and City Council FROM: Scott C. Stiles, City Manager
Members

I. DEPARTMENT ITEMS

A. LETTERS OF SUPPORT

Copies of the letters of support from Mayor Steve Jones for the 2021 Business Development Initiative and for Great Wolf Lodge are included for your information.

B. 2021-22 ANNUAL ACTION PLAN INFO-GRAPHIC

The 2021-22 Annual Action Plan for the Use of HUD Funds, Performance Period July 1, 2021 to June 30, 2022 info-graphic is included.

II. ITEMS FROM OTHER GOVERNMENTAL AGENCIES, OUTSIDE AGENCIES, BUSINESSES AND INDIVIDUALS

A. News Releases from the County of Orange:

- a. OC Health Care Agency graphics for social media
- b. OC Health Care Agency Announces Closure of Disneyland Drive-Thru Super Point-of-Dispensing Site in Anaheim on April 30, 2021 (April 23, 2021)
- c. County of Orange Awarded \$500,000 Grant for Program Providing New Employment Opportunities and Training to Veterans (April 27, 2021)

B. Garden Grove Historical Society May 2021 newsletter.

C. *Amendment to the Notice of Treatment for the Asian Citrus Psyllid and Findings Regarding a Treatment Plan for the Asian Citrus Psyllid* from the California Department of Food and Agriculture.

D. OC Streetcar construction alert for the week of April 26, 2021.

• OTHER ITEMS

– **SOCIAL MEDIA HIGHLIGHTS AND NEWSPAPER ARTICLES**

Copies of the week's social media posts and local newspaper articles are attached for your information.

– **MISCELLANEOUS ITEMS**

Items of interest are included.



Scott C. Stiles
City Manager



CITY OF GARDEN GROVE

April 26, 2021

The Honorable Chairman Andrew Do
Orange County Supervisor, First District
333 West Santa Ana Boulevard
Santa Ana, CA 92701

Steve Jones
Mayor

Kim Bernice Nguyen
Mayor Pro Tem - District 6

George S. Brietigam
Council Member - District 1

John R. O'Neill
Council Member - District 2

Diedre Thu-Ha Nguyen
Council Member - District 3

Patrick Phat Bui
Council Member - District 4

Stephanie Klopfenstein
Council Member - District 5

SUBJECT: Garden Grove Letter of Support for the 2021 Business Development Initiative

Dear Chairman Do:

On behalf of the City of Garden Grove, I am honored, grateful, and in full support of the 2021 Business Development Initiative grant for the Garden Grove Community Foundation that would provide business and economic support from the County of Orange and specifically, from your office that serves the First District and represent the residents of Garden Grove.

The COVID-19 Pandemic has caused significant economic uncertainty and hardship with direct impacts to Garden Grove small business entrepreneurs. The First District's grant support and investment will contribute greatly toward community revitalization, leverage innovation, encourage small business investment, and strengthen marketability promotion of key Business Districts within the City. The 2021 Business Development Initiatives integrates the momentum of the City's recent strategic plans including: Economic Development Strategic Plan, Active Downtown Plan, and the Downtown Parking Management Strategic Plan, thereby implementing actionable tasks towards economic recovery. The City truly believes in and supports the partnership with the County of Orange/First District efforts. We are eager to share with you the results and stories of all our efforts in collaboration with the Garden Grove Community Foundation.

Sincerely,

Steve Jones
Mayor



CITY OF GARDEN GROVE

April 26, 2020

To whom it may concern:

As Great Wolf Lodge looks to expand, we appreciate the opportunity to share the positive impact Great Wolf Lodge has had on our community. Since the original development stage of the Great Wolf project, there has been a strong relationship with the City of Garden Grove and related agencies. We were excited to bring this great venue to the Southern California market as it serves as a perfect complement to our other family-friendly tourism offerings.

In addition to the 700+ jobs created and millions of dollars in tax revenue generated by Great Wolf Lodge, the local businesses surrounding the resort have seen tremendous growth since opening. The guests and staff at the resort have frequented local restaurants, retail outlets and gas stations helping fuel additional development in the area.

Moreover, the resort is a great partner in our local community. Leadership at the resort has supported a number of local charitable organizations through volunteer efforts or donations. This includes food donations to the Orange County Food Bank, fundraising efforts for Make A Wish, school reading programs and room night donations to countless charities across the region. They've also supported City initiatives by partnering with our Police and Fire Departments on training exercises. Importantly, the tax revenue generated has provided funding to provide city facilities and services that benefit all residents.

It has been 5-years since the Great Wolf Lodge opened in Garden Grove. As Mayor, I could not be more pleased with result of this partnership, and look forward to prosperous years ahead. Any city would be fortunate to have a Great Wolf Lodge in their community.

If any city officials are interested to learn more about our experience with the Great Wolf Lodge in Garden Grove, please feel free to reach out.

Sincerely,

Steve Jones
Mayor

Steve Jones
Mayor

Kim Bernice Nguyen
Mayor Pro Tem - District 6

George S. Brietigam
Council Member - District 1

John R. O'Neill
Council Member - District 2

Diedre Thu-Ha Nguyen
Council Member - District 3

Patrick Phat Bui
Council Member - District 4

Stephanie Klopfenstein
Council Member - District 5

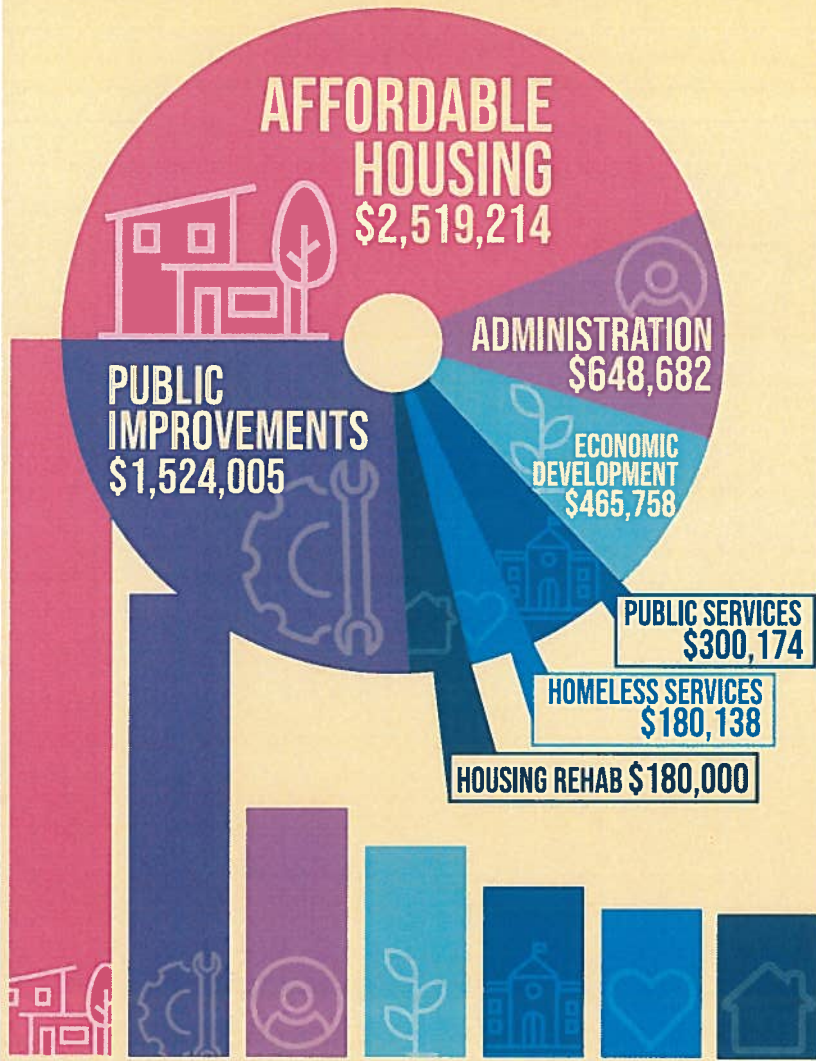


2021-22 ANNUAL ACTION PLAN

Performance Period: July 1, 2021 – June 30, 2022

2021 PROJECTED FUNDING

During FY 2021-22, the City of Garden Grove is projecting to utilize a total of \$5,817,971 IN HUD grant funds to benefit low/moderate income residents through a variety of programs and services.



HUD ENTITLEMENT FUNDS

The City of Garden Grove is an administrative authority for the U.S. Department of Housing and Urban Development's (HUD) Community Development Block Grant (CDBG), HOME Investment Partnership (HOME), and Emergency Solutions Grant (ESG) allocations.

\$2,870,170 IN CDBG funding will be programmed to benefit low/moderate income residents, through housing rehabilitation, senior services, fair housing activities, infrastructure improvements, and gang suppression activities.

\$2,767,663 IN HOME funding will be used to develop affordable housing and provide rental assistance to low-income households.

\$180,138 IN ESG funding will be used to provide homeless services through street outreach, emergency shelter, homeless prevention, and rapid rehousing.

CDBG AND ESG CARES ACT FUNDING will continue to be programmed to provide supportive services to those affected by the Coronavirus (COVID-19).



UNDUPLICATED PERSONS SERVED
14,317 INDIVIDUALS

HOUSING REHABILITATED
30 UNITS

COMMUNITY OUTREACH & EDUCATION
7,300 INDIVIDUALS

HOMELESS ASSISTANCE
293 INDIVIDUALS

FAIR HOUSING SERVICES
210 INDIVIDUALS

MEALS PROVIDED
141,306 MEALS

To view the full Annual Action Plan, visit: ggcity.org/neighborhood-improvement/reports
Contact Timothy Throne, Program Specialist, at (714) 741-5144 or timothyt@ggcity.org for more info.



OChealth
CARE AGENCY

You **DO NOT** need
to be a **U.S. Citizen**
to receive the
COVID-19 vaccine!

Our concern is the health of our community.



OChealth
CARE AGENCY

NO SE REQUIERE
una prueba de ciudadanía
estadounidense para recibir
la vacuna COVID-19.

Nuestra preocupación es la salud de nuestra comunidad.



OChealth
CARE AGENCY

Chích ngừa
COVID-19 KHÔNG
đòi hỏi phải là
công dân Hoa Kỳ.

**Quan tâm duy nhất của chúng tôi là
sức khỏe của cộng đồng chúng ta.**

For Immediate Release: April 23, 2021
Contact: Jessica Good, Public Information Manager
Email: JGood@ochca.com



PRESS RELEASE

OC Health Care Agency Announces Closure of Disneyland Drive-Thru Super Point-of-Dispensing Site in Anaheim on April 30, 2021

(Santa Ana, CA) — As of April 30, 2021, the OC Health Care Agency (HCA) Disneyland Drive-Thru Super Point-of-Dispensing (POD) site in Anaheim will close.

From opening day on January 13 through April 23, 2021, the HCA, alongside partners including Anaheim Fire & Rescue, the City of Anaheim, the Orange County Fire Authority, and community volunteers, has administered approximately 220,852 doses at the Disneyland POD site — first through walk-up service and then as a drive-thru Super POD site offering Americans with Disabilities Act (ADA)-compliant in-vehicle vaccinations. It is anticipated that by April 30th, when the location ceases operations, 233,000 doses will have been administered there.

“On behalf of the HCA and the County of Orange, our sincerest thanks to the Disneyland Resort for being the first organization to offer their time, talents and property to launch and sustain our first Super POD,” said Dr. Clayton Chau, County Health Officer and Director of the HCA.

As more local businesses are reopening and increased, full-time employment opportunities are becoming more readily available, the HCA has made the determination to reallocate existing staffing resources to other Super POD locations to bolster their operations.

“I want to remind the community that our Soka University, Santa Ana College, and the OC Fair & Event Center Super PODs currently offer ADA-compliant drive-thru lanes to continue meeting the needs of individuals with disabilities. We’re not going away — we’re just balancing the changing needs of eligible patients with our staffing and vaccine allocations to ensure we can be as responsive as possible,” said Dr. Chau.

For the past month leading up to this planned closure, the OC Health Care Agency has only provided second dose vaccination appointments at the Disneyland Drive-Thru Super POD out of convenience for those who received their first dose at that location. The HCA also continues to administer walk-up vaccination at the Anaheim Convention Center, Soka University, the OC Fair & Event Center, Santa Ana College, and through targeted mobile PODs.

To learn more about additional vaccination distribution channels in Orange County, please visit: <https://ocCOVID19.ochcahealthinfo.com/covid-19-vaccine-distribution-channels>. For vaccination and Othena-related questions, please call the OC COVID-19 Hotline daily from 8 a.m.-5 p.m. at (714) 834-2000.

###

[HCA Press Releases](#) | [follow on Twitter](#) | [friend on Facebook](#) | [forward to a friend](#)

Copyright © 2021 Health Care Agency. All rights reserved.



COUNTY OF ORANGE

P R E S S R E L E A S E

WWW.OCGOV.COM

FOR IMMEDIATE RELEASE

Contact: Mechelle Haines
Public Information Officer
OC Community Resources
(657) 230-5290

Mechelle.Haines@occr.ocgov.com

County of Orange Awarded \$500,000 Grant for Program Providing New Employment Opportunities and Training to Veterans

Santa Ana, Calif. (April 27, 2021) – The Orange County Workforce Development Board (OCDB) was awarded a Veterans' Employment-Related Assistance Program (VEAP) grant by the California Employment Development Department (EDD) for the amount of \$500,000 to help veterans find jobs. In partnership with the Orange County (OC) Veterans Service Office, OC One-Stop Center, and a consortium of community partners, the OCDB will use this grant to help veterans access employment opportunities through the OC Veterans Employment-Related Assistance Program.

"Our nation owes so much to every veteran who has served and risked their lives defending our democracy and values," said Chairman Andrew Do, First District Supervisor. "As the nation's fourth-largest county with the highest veteran population, we must continue to create and support programs that help set veterans up for success with their transition to civilian life."

The OC Veterans Employment-Related Assistance Program will offer career services to veterans while providing employers in high-growth industries with dedicated and highly-skilled applicants for fields such as advanced manufacturing, construction, educational and health services, logistics and transportation, aerospace, and information technology. Career services will include career counseling, training, credentialing, apprenticeships, paid work experience, on-the-job training, job placement assistance, and follow-up and retention services.

"Outreach and access to resources is a priority in Orange County," said Vice Chairman Doug Chaffee, Fourth District Supervisor. "We want to ensure our large veteran population has what they need to be successful in their daily lives."

This program will serve all veterans with a focus on those facing significant barriers to employment such as having a disability, mental health challenges, low-income, experiencing homelessness, and more. OCDB will use an intensive client-centered case management approach to evaluate the need for, and provision of, resources including access to technology for distance learning; housing assistance; childcare; mental health care; and a wide range of other supportive services.

"Helping Veterans transition and secure quality civilian jobs is a top priority for my office. This funding creates opportunities for the County to deliver counseling and training services directly to our highly-skilled Veteran applicants. Funding for apprenticeships and on the job training in these sectors benefit those who have served and sacrificed for us," said Supervisor Katrina Foley, Second District.

Veterans interested in enrolling are encouraged to fill out an interest form to receive an invitation to attend a Zoom orientation. After the orientation, a representative will follow up. The first orientation is scheduled for Friday, May 14, 2021.



COUNTY OF ORANGE

P R E S S R E L E A S E

WWW.OCGOV.COM

"We appreciate our veterans and their immeasurable sacrifice. As a longtime advocate for Orange County veterans, I support the County's efforts to help our veterans achieve financial security and a brighter future," said Supervisor Don Wagner, Third District.

"Supporting our veterans, by providing access to services and opportunities, is essential in welcoming our brave military servicemen and women back to daily life here in Orange County," said Supervisor Lisa Bartlett, Fifth District.

For more information on how to enroll in this program, visit <https://www.oconestop.com/veterans-services> or call the Economic and Business Recovery Call Center at (714) 480-6500.

The County of Orange would like to thank the following Orange County Community Partners: California Employment Development Department (EDD), EDD JVSG Program, U.S. Department of Veterans Affairs, U.S. VETS, Orange County Community Colleges, Saddleback, Coastline, Irvine Valley, Brandman University, Goodwill Industries of Orange County, Orange County Health Care Agency, Orange County Veterans Service Office and the Orange County Veterans & Military Families Collaboration.

###

The Orange County Workforce Development Board, through the Orange County Business Service Center and Orange County One-Stop Center, offers comprehensive services such as hiring assistance, career transition services, and employment services to businesses and job seekers at no cost.

This WIOA Title I financially assisted program or activity is an equal opportunity employer/program. Auxiliary aids and services are available upon request to individuals with disabilities. If you need special assistance to participate in this program, please call 949-341-8000. TDD/TTY users, please call the California Relay Service at (800) 735-2922 or 711. Please call 48 hours in advance to allow the One-Stop Center to make reasonable arrangements to ensure accessibility to this program.



CALLING ALL EMPLOYERS! HIRE A VETERAN

BENEFITS

- Get reimbursed up to 50% towards the cost of training new hires.
- As a "Veteran Friendly Employer", you reap the benefits of hiring Veterans with experience in teamwork, leadership, integrity, and the ability to get the job done.



TELL US ABOUT YOUR OPEN POSITIONS

Tell us about your business, the type of candidates you're looking for, and the positions you are hiring for. We can even make a site visit to get a feel for your company culture.



CREATE A CUSTOMIZED TRAINING PROGRAM

We can help you develop a training plan for your new hires. If you already have one in place, you can send it to us for review!



TRAIN YOUR NEW EMPLOYEES

Welcome aboard new employees while getting reimbursed on a monthly basis!

SCAN OR VISIT [HTTPS://WWW.OCONESTOP.COM/VETERANS-SERVICES](https://www.oconestop.com/veterans-services)
TO LEARN MORE AND APPLY



READY S.E.T. OC
WIOA Youth Program

America's JobCenter
of California

CC Community Services



This WIOA Title I financially assisted program or activity is an equal opportunity employer/program. Auxiliary aids and services are available upon request to individuals with disabilities. TDD/TTY users, please call the California Relay Service (800) 735-2922 or 711. If you need special assistance to participate in this program, please call 714-480-6500 at least 72 hours prior to the event to allow reasonable arrangements to be made to ensure program accessibility.



OC VETERANS' EMPLOYMENT-RELATED ASSISTANCE PROGRAM (VEAP)

Provides free job training, career and supportive services, and job placement for recently separated or near-term separation military members



Are you a VETERAN?

Are you:

- Unemployed (27 weeks in the past 12 months)
- An active duty military who is 180 days from separation
- A low-income Veteran
- A disabled Veteran
- A homeless Veteran
- Suffering from mental health issues

REIMAGINE WHAT'S POSSIBLE!

On-the-Job Training

Work-Based Learning

Apprenticeships

Entrepreneurship Programs and Resources

Veteran-Friendly Employers

Employment Readiness Training

Individualized Career Services and Training Services

Skills Training

Earn Industry Recognized Certificates or Degrees

**SHAPE YOUR FUTURE THROUGH VEAP.
DESIGNED WITH YOU IN MIND!**

SCAN OR VISIT [HTTPS://WWW.OCONESTOP.COM/VETERANS-SERVICES](https://www.oconestop.com/veterans-services) TO LEARN MORE AND APPLY FOR THESE FREE SERVICES



This WIOA Title I financially assisted program or activity is an equal opportunity employer/program. Auxiliary aids and services are available upon request to individuals with disabilities. TDD/TTY users, please call the California Relay Service (800) 735-2922 or 711. If you need special assistance to participate in this program, please call 714-480-6500 at least 72 hours prior to the event to allow reasonable arrangements to be made to ensure program accessibility.

MAIL: P.O. BOX 4297, Garden Grove, CA 92842
LOCATION: 12174 Euclid Ave., Garden Grove, CA.
Established 1966

May 2021
Volume 53 Issue 5
Editor – Barbara Gossett

Office Hours: Tuesday 9 - 12; Friday 9 - 1
Phone: (714) 530-8871; fax 534-2611
Email: gardengrovehistsoc@att.net

Garden Grove Historical Society

About the Barn Sale

Calendar of Activities

May

May 2 – Public tour, 1:30 PM.

May 16 – Public tour, 1:30 PM.

May 25 – Board meeting, 9:30 AM.

Summer Schedule

June 6 – Public tour, 1:30 PM.

June 20 – Public tour, 1:30 PM. Celebrate Father's Day with us!

June 22 – Board meeting, 9:30 AM

July 4 – No public tour on the glorious 4th

July 18 – Public tour, 1:30 PM

July 27 – Board meeting, 9:30 AM

August 1 – Public tour, 1:30 PM

August 15 – Public tour, 1:30 PM

August 24 – Board meeting, 1:30 PM

The last weekend in April was the occasion for another action-packed Barn Sale. Our enthusiastic staff as well as our first-rate merchandise made for a lot of happy shoppers!

Former GGHS president and barn sale guru, Terry Thomas, shared some background on the now-traditional barn sale. It all began shortly after formation of the Society, in the early 1970s. The instigator was Hilda Reafsnider who came up with a way to raise funds. It started as a book sale, but by 1974 (according to the March 1974 newsletter), it had grown into the "Barn Sale". We look forward to many more!

Here are some images from this year:



Megan Galway and Valerie Knickrehm at the cashier's table



Items in one of the stables (yes, some of the hardware can still be seen) waiting for future barn sales



Sherry Britten & Debbie Johnson at the jewelry counter

Preserve Orange County

Have you heard of a relatively new organization in Orange County, "Preserve Orange County" (or "Preserve OC")? Here's an introduction and a quick look at this ambitious organization.

Preserve OC was created in 2016 by a group of residents who saw a need for a central, unified group of experts who were concerned with protecting and preserving the remaining historic resources of Orange County. Their mission is "to work through education and advocacy to promote conservation of our county's architectural and cultural heritage."

The executive director is Krista Nichol, an architectural historian with a Master's degree in Heritage Conservation. Others on the board are:

- Phil Bacerra of Santa Ana, a land-use consultant
- Andrea Dumovich Heywood of Rancho Santa Margarita, a regional planning professional with a specialty in historic resources
- Alan Hess of Irvine, an architect and architectural historian
- Robert Imboden of Orange, a historic resources consultant
- Bill Kroener of Newport Beach, attorney
- Christy Ko Kim of Foothill Ranch, architect
- Deborah Rosenthal of Tustin, urban planner and attorney
- Tim Rush of Santa Ana, a business executive and historian

There are also some half dozen volunteers who provide research, writing, photography, membership administration, and public events.

Becoming a member involves selecting a level of membership, a common theme in non-profit organizations with a commitment to advocacy. Individuals can join for \$25 annually; other levels range from \$40 to \$500 annually. Preserve OC's website explains the levels and benefits, at <https://preserveoc.org>.

They have just released an interactive map showing places of historic interest in Orange County. Locations that have been added to the National and California Registers of historic places and historic landmarks or resources are, of course,

included; however, beyond these, the database includes places that have historic significance but are not yet officially recognized. These listings follow the same criteria as the national and state registers; only the paperwork listing these sites has not been completed. Preserve OC is also aiming to include places that are on local civic historic registers; staff and volunteers are working with locals to get the information so these can be added.

A visit to the Preserve OC site and link to the "interactive map" (highly recommended as this will make the map much more comprehensible) will outline how the visitor can call up information (at <https://preserveoc.org/historic-sites-map/>). The map initially shows a generous speckling of big red dots, each one describing an historic resource. This information can be refined further, to link to listings on the National Register, State Register, county listings, those which are undesignated, and those which are open to the public. If you would like to look at a particular time in history, there's a timeline sliding scale, ranging from 1769 to 1990. But wait, you can drill down even further, sorting your list on the community you're looking at, the property type, and the architectural style. Clearly, this is the kind of website you can lose yourself in, especially if you're a history buff!

Taking a quick look at my favorite filter, Architectural Style, brings up a long list of styles that a structure might fit into, shown here:

- Adobe, most of which are sites where the building once stood, now marked by a plaque
- American Territorial (there are only two)
- Art Deco (Santa Ana and Brea city halls)
- Aztec (no listings)
- Beaux Arts (Rankin Building in Santa Ana, F & M Bank in Fullerton, and St. John Vianney chapel in Newport Beach)
- Brutalism (Fountain Valley Library and Cypress College)
- Chicago School (Chapman Building in Fullerton)
- Classical Revival (includes schools in Villa Park and Orange and the Spurgeon Building and Yost Theater in Santa Ana)
- Colonial Revival (several in Anaheim in the Melrose-Backs neighborhood, including the Backs House)
- Craftsman (there are quite a few homes, as well as Richard Nixon's birthplace in Yorba Linda)

and, surprisingly, a cottage in the Cleveland National Forest)

- Eastlake/Stick (the only listing is the Parker House in Orange, although the Stanley House has elements of this style)
- Googie (this style was named for a coffee shop in LA that is no longer there; however, the Coco's in Garden Grove that was originally a Bob's Big Boy is a good example)
- Gothic Revival (all examples are churches)
- International Style (includes the original Garden Grove Community Church, now Christ Cathedral, as well as the Huntington Beach Library)
- Late Modern (Christ Cathedral and its carillon)
- Lombard Romanesque Revival (The auditorium on the Huntington Beach High School campus is the only example listed of this style)
- Mediterranean Revival (Among the four listings is the deserted YMCA building in downtown Santa Ana – see picture)
- Mid-Century Modern (This relatively new style proliferates in communities like Garden Grove, but there are none listed as “historic”)
- Minimal Traditional (far too many to list!)
- Mission Revival (the Anaheim Packinghouse is listed, but not the Fiscus House, also in Anaheim, a real treasure – see picture)
- Modern (These recent places are worth a visit: Portland Cement House and Haliburton House (Laguna Beach), Lido vacation homes (Lido Isle), and Forever homes (Fullerton). The Cinderella homes in Garden Grove could also qualify (see April 2020 newsletter).
- New Formalism, such as the Home Savings Bank (now a Chase Bank) at Brookhurst and Chapman in Garden Grove
- Norman Revival (Laguna Beach Lumber Co. is the only listing)
- Organic Modern (four locations in Newport Beach, including businesses and residences)
- Postmodern (the only listing is the San Juan Capistrano Library and Auditorium)
- Programmatic (The only site is the Parasol Restaurant in Seal Beach. In this style, a building is shaped like an everyday object; this one is a parasol)
- Queen Anne (This includes the pavilion on Balboa as well as the Stanley House).

- Ranch (Cliff May homes and Cinderella homes are listed, including Cliff May homes in Garden Grove)
- Richardsonian Romanesque (The old Orange County Courthouse is the only one)
- Spanish Colonial (Mission in San Juan Capistrano)
- Spanish Colonial Revival (includes Fullerton rail station, Placentia packinghouse, and Casa Romantica in San Clemente)
- Streamline Moderne (There's only one, the Esslinger Building in San Juan, a former doctor's office that was designed by the doctor, apparently an architect as well)
- Theme (Disneyland is the only listing; Knott's might also qualify)
- Vernacular (several examples listed, including the Fullerton Odd Fellows Temple).

Here are a few examples of what's listed (or, in some cases, should be!):



The Fiscus House in Anaheim, a Mission Revival example (not on the map)



The Santa Ana YMCA, closed for a couple of decades now



A Spanish Revival office in Placentia

THE GARDEN GROVE HISTORICAL SOCIETY
12174 Euclid Street
P.O. Box 4297
GARDEN GROVE, CALIFORNIA 92843-4297

RETURN SERVICE REQUESTED



DATED MATERIAL

STANLEY RANCH MUSEUM TOURS

Tours begin at 1:30 PM on the first and third Sundays of the month.

Suggested donations are \$1 for students under the age of 18, and \$5 for adults.

Group tours for 8 or more can be scheduled Monday through Saturday by calling the office at (714) 530-8871.

MEMBERSHIP CATEGORIES

STUDENT	\$ 15
INDIVIDUAL	\$ 20
FAMILY	\$ 30
BUSINESS / ORG.	\$ 40
SUSTAINING	\$ 50
PATRON	\$ 100
LIFE	\$ 500
CENTENNIAL	\$1874



The Garden Grove Historical Society is a 501C(3) Non-profit organization founded in April 1966, and is not funded by any city, county, state, or federal agency. Our funding is from membership dues, fundraisers, and gifts of property or dollars. A charitable tax deduction is available for gifts.

SOCIETY MEETINGS

General Meetings are held on the first Tuesday of the month at 7 PM. There are no meetings in May, June, July, and August

April potluck dinner and the November holiday dinner start at 6 PM.

Board meetings are held on the fourth Tuesday of every month.



CALIFORNIA DEPARTMENT OF FOOD AND AGRICULTURE

OFFICIAL NOTICE FOR COMMUNITIES IN ORANGE COUNTY PLEASE READ IMMEDIATELY

AMENDMENT TO THE NOTICE OF TREATMENT FOR THE ASIAN CITRUS PSYLLID

Between April 3, 2017 to April 5, 2021, the California Department of Food and Agriculture (CDFA) confirmed the presence of the causative bacterial agent of the citrus disease huanglongbing (HLB) in citrus tree tissue and insect vectors collected in the cities of Anaheim, Fountain Valley, Fullerton, Garden Grove, Huntington Beach, Irvine, La Habra, Orange, Placentia, Santa Ana, Tustin, Westminster, and Yorba Linda, in Orange County. HLB is a devastating disease of citrus and is spread through feeding action by populations of the Asian citrus psyllid (ACP), *Diaphorina citri* Kuwayama. In order to determine the extent of the infestation, and to define an appropriate response area, additional surveys took place for several days over a 250-meter radius area, centered on the detection sites. Based on the results of the surveys, implementation of the CDFA's current ACP and HLB response strategies, which include treatment for ACP, are necessary for eradication and control.

A Program Environmental Impact Report (PEIR) has been certified which analyzes the ACP and HLB treatment program in accordance with Public Resources Code, section 21000 et seq. The PEIR is available at <http://www.cdfa.ca.gov/plant/peir/>. The treatment activities described below are consistent with the PEIR.

In accordance with integrated pest management principles, CDFA has evaluated possible treatment methods and determined that there are no physical, cultural or biological control methods available to control ACP in this area. The Notice of Treatment and the associated Proclamation of Emergency Program are valid until April 5, 2022, which is the amount of time necessary to determine that the treatment was successful.

The treatment plan for the ACP infestation will be implemented within a 250-meter radius of each detection site, as follows:

- Tempo® SC Ultra (cyfluthrin), a contact insecticide for controlling the adults and nymphs of ACP, will be applied from the ground using hydraulic spray equipment to the foliage of host plants; and
- Merit® 2F or CoreTect™ (imidacloprid), a systemic insecticide for controlling the immature life stages of ACP, will be applied to the soil underneath host plants. Merit® 2F is applied from the ground using hydraulic spray equipment. CoreTect™, which is used in place of Merit® 2F in situations where there are environmental concerns about soil surface runoff of liquid Merit® 2F, is applied by inserting tablets into the ground and watering the soil beneath the host plants.

Public Notification:

Residents of affected properties shall be invited to a public meeting or contacted directly by CDFA staff. Consultation with the California Department of Pesticide Regulation, the Office of Environmental Health Hazard Assessment, and the county agricultural commissioner's office will be provided at the public meeting or upon request to address residents' questions and

Asian Citrus Psyllid
Official Notice
Program CS-4330
Page 2

concerns.

Residents are notified in writing at least 48 hours in advance of any treatment in accordance with the Food and Agricultural Code sections 5771-5779 and 5421-5436.

Following the treatment, completion notices are left with the residents detailing precautions to take and post-harvest intervals applicable to the citrus fruit on the property.

Treatment information is posted at http://cdfa.ca.gov/plant/acp/treatment_maps.html. Press releases, if issued, are prepared by the CDFA information officer and the county agricultural commissioner, in close coordination with the program leader responsible for treatment. Either the county agricultural commissioner or the public information officer serves as the primary contact to the media.

Information concerning the HLB/ACP program shall be conveyed directly to local and State political representatives and authorities via letters, emails, and/or faxes.

For any questions related to this program, please contact the CDFA toll-free telephone number at 800-491-1899 for assistance. This telephone number is also listed on all treatment notices.

Enclosed are the findings regarding the treatment plan, a November 22, 2017 University of California and United States Department of Agriculture briefing paper on the increasing detection rate of ACP/HLB, maps of the treatment area, work plan, integrated pest management analysis of alternative treatment methods, and a pest profile.

Attachments

**FINDINGS REGARDING A TREATMENT PLAN FOR
THE ASIAN CITRUS PSYLLID
Orange County
Program CS-4330**

Between April 3, 2017 to April 5, 2021, the California Department of Food and Agriculture (CDFA) confirmed the presence of the causative bacterial agent of the citrus disease huanglongbing (HLB) in citrus tree tissue and insect vectors collected in the cities of Anaheim, Fountain Valley, Fullerton, Garden Grove, Huntington Beach, Irvine, La Habra, Orange, Placentia, Santa Ana, Tustin, Westminster, and Yorba Linda, in Orange County. HLB is a devastating disease of citrus and is spread through feeding action by populations of the Asian citrus psyllid (ACP), *Diaphorina citri* Kuwayama.

Additional surveys were conducted by CDFA in order to determine the extent of the infestation in Orange County and to define an appropriate response area. Each survey took place for several days over a 250-meter radius area, centered on the following detections: February 14, 2018, Fullerton; May 25, 2018, Yorba Linda; June 18, 2019, La Habra; November 20, 2019, Placentia; March 13, 2020, Westminster; June 29, 2020, Irvine; July 3, 2020, Fountain Valley; August 28, 2020, Tustin; December 24, 2020, Huntington Beach; March 18, 2021, Garden Grove, Orange, and Santa Ana; April 5, 2021, Anaheim. Based on these surveys, pest biology, findings and recommendations from California's HLB Task Force, the Primary State Entomologist, the Primary State Plant Pathologist, United States Department of Agriculture (USDA) experts on HLB and ACP, county agricultural commissioner representatives who are knowledgeable on HLB and ACP, and experience gained from USDA's control efforts in the southeastern United States, I have determined that an infestation of HLB exists and it poses a statewide imminent danger to the environment and economy.

The results of the additional surveys also indicated that the local infestation is amenable to CDFA's ACP and HLB emergency response strategies, which include chemical control treatment. This option was selected based upon minimal impacts to the natural environment, biological effectiveness, minimal public intrusiveness, and cost.

HLB is considered one of the most devastating diseases of citrus in the world. The bacterium that causes the disease, *Candidatus Liberibacter asiaticus*, blocks the flow of nutrients within the tree and causes the tree to starve to death within two to five years of infection. There is no cure. Symptoms of HLB include yellow shoots with mottling and chlorosis of the leaves, misshapen fruit, fruit that does not fully color, and fruit that has a very bitter taste, which makes it inedible for human consumption. These symptoms often do not appear until two years after infection, making this particular disease difficult to contain and suppress. These undesirable symptoms of HLB-infected trees result in the trees' loss of commercial and aesthetic value while at the same time such trees are hosts for spreading HLB.

ACP is an insect pest that is native to Asia. It has appeared in Central and South America. In the United States, ACP has been found in Alabama, Arizona, Florida, Georgia, Hawaii, Louisiana, Mississippi, South Carolina, and Texas. In California, ACP has been found in twenty-eight counties.

ACP feeds on members of the plant family Rutaceae, primarily on *Citrus* and *Murraya* species, but is also known to attack several other genera, including over forty species of plant that act as hosts and possible carriers. The most serious damage to the environment and property caused by ACP – the death and loss in value of host plants – is due to its vectoring HLB. In addition, the psyllids also cause injury to their host plants via the withdrawal of large amounts of sap as they feed and via the production of large amounts of honeydew, which coats the leaves of the tree and encourages the growth of sooty mold. Sooty mold blocks sunlight from reaching the leaves.

These pests present a significant and imminent threat to the natural environment, agriculture, and economy of California. For example, HLB would have severe consequences to both the citrus industry and to the urban landscape via the decline and the death of citrus trees. California is the top citrus-producing state in the U.S., with total production valued at over \$2.2 billion. Recent studies in Florida have shown that the presence of HLB increases citrus production costs by up to 40 percent and has resulted in a loss of over \$7 billion and 6,600 jobs.

Additionally, if unabated, the establishment of HLB in California would harm the natural environment as commercial and residential citrus growers would be forced to increase pesticide use. And, the establishment of HLB could lead to enforcement of quarantine restrictions by the USDA and our international trading partners. Such restrictions would jeopardize California's citrus exports, which are valued at over \$800 million per year.

The causative bacteria of HLB was first detected in Los Angeles in 2012. It has subsequently been detected in Orange, Riverside, San Bernardino, San Diego counties. Prior to November 2017, the level of HLB risk in California was thought to be relatively stable. However, on November 22, 2017, the University of California and the United States Department of Agriculture released a briefing paper that indicates, beginning in June 2017, a sharp increase in HLB and HLB-positive ACP detections, cities containing HLB, and ACP nymphs. With the release of the November 22, 2017 briefing paper, the Department became aware of the exponential intensification of the HLB epidemic, as demonstrated by the indicators contained in the paper.

Infected trees are destroyed as soon as they are discovered. However, due to the length of time it takes for symptoms to appear on infected trees, new infestations continue to be discovered. If the current infestation is not abated immediately, ACP will likely become established in neighboring counties and could pave the way for a statewide HLB infestation.

CDFA has evaluated possible treatment methods in accordance with integrated pest management (IPM) principles. As part of these principles, I have considered the following treatments for control of ACP: 1) physical controls; 2) cultural controls; 3) biological controls; and 4) chemical controls. Upon careful evaluation of each these options, I have determined that it is necessary to address the imminent threat posed by HLB using currently available technology in a manner that is recommended by the HLB Task Force.

Based upon input from the HLB Task Force, the Primary State Entomologist, the Primary State Plant Pathologist, USDA experts on HLB and ACP, and county agricultural commissioner representatives who are knowledgeable on ACP and HLB, I find there are no physical, cultural or biological control methods that are both effective against ACP and allow CDFA to meet its statutory obligations, and therefore it is necessary to conduct chemical treatments to abate this threat. As a result, I am ordering insecticide treatments for ACP using ground-based equipment within a 250-meter radius around each HLB detection site and any subsequent sites.

A Program Environmental Impact Report (PEIR) has been prepared which analyzes the ACP and HLB treatment program in accordance with Public Resources Code (PRC), section 21000 et seq. The PEIR was certified in December 2014 and is available at <http://www.cdfa.ca.gov/plant/peir/>. The PEIR addresses the treatment of the ACP and HLB at the program level and provides guidance on future actions against ACP and HLB. It identifies feasible alternatives and possible mitigation measures to be implemented for individual ACP and HLB treatment activities. The ACP and HLB program have incorporated the mitigation measures and integrated pest management techniques as described in the PEIR. In accordance with PRC section 21105, this PEIR has been filed with the

appropriate local planning agency of all affected cities and counties. No local conditions have been detected which would justify or necessitate preparation of a site-specific plan.

Sensitive Areas

CDFA has consulted with the California Department of Fish and Wildlife's California Natural Diversity Database for threatened or endangered species, the United States Fish and Wildlife Service, the National Marine Fisheries Service and the California Department of Fish and Wildlife when rare and endangered species are located within the treatment area. Mitigation measures for rare and endangered species will be implemented as needed. The CDFA shall not apply pesticides to bodies of water or undeveloped areas of native vegetation. All treatment shall be applied to residential properties, common areas within residential development, non-agricultural commercial properties, and rights-of-way.

Work Plan

The proposed treatment area encompasses those portions of Orange County which fall within a 250-meter radius area around the properties on which the causative agent of HLB has been detected, and any subsequent detection sites within the proposed treatment boundaries. The Notice of Treatment and the associated Proclamation of Emergency Program are valid until April 5, 2022, which is the amount of time necessary to determine that the treatment was successful. Maps of the treatment boundaries are attached. The work plan consists of the following elements:

1. ACP Monitoring. Visual surveys within a 250-meter radius around each HLB detection site will be conducted to monitor post-treatment ACP populations.
2. ACP and HLB Visual Survey. All host plants will be inspected for ACP and for HLB symptoms within a 250-meter radius around each HLB detection site, at least twice a year. ACP and host plant tissue will be collected and forwarded to a USDA accredited laboratory for identification and analysis.
3. HLB Disease Testing. All host tree tissues, and ACP life stages shall be tested for the presence of HLB.
4. Treatment. All properties with host plants within a 250-meter radius around each HLB detection site shall be treated according to the following protocol to control ACP:
 - a. Tempo® SC Ultra, containing the contact pyrethroid insecticide cyfluthrin, shall be applied by ground-based hydraulic spray equipment to the foliage of host plants for controlling the adults and nymphs of ACP. Treatment may be reapplied up to three times annually if additional ACP are detected.
 - b. Either Merit® 2F or CoreTect™, containing the systemic insecticide imidacloprid, will be applied to the root zone beneath host plants for controlling developing nymphs and providing long term protection against reinfestation. Merit® 2F is applied as a soil drench, while CoreTect™ tablets are inserted two to five inches below the soil surface and watered in to initiate tablet dissolution. CoreTect™ is used in place of Merit® 2F in situations where there are environmental concerns about soil surface runoff of the liquid Merit® 2F formulation, such as host plants growing next to ponds and other

environmentally sensitive areas. Treatment may be re-applied once annually if additional ACPs are detected.

Public Information

Residents of affected properties shall be invited to a public meeting or contacted directly by CDFA staff. Consultation with the California Department of Pesticide Regulation, the Office of Environmental Health Hazard Assessment, and the county agricultural commissioner's office will be provided at the public meeting or upon request to address residents' questions and concerns.

Residents shall be notified in writing at least 48 hours in advance of any treatment in accordance with the Food and Agricultural Code (FAC), sections 5771-5779 and 5421-5436.

After treatment, completion notices are left with the residents detailing precautions to take and post-harvest intervals applicable to the citrus fruit. Treatment information is posted at http://cdfa.ca.gov/plant/acp/treatment_maps.html.

For any questions related to this program, please contact the CDFA toll-free telephone number at 800-491-1899 for assistance. This telephone number is also listed on all treatment notices. Treatment information is posted at http://cdfa.ca.gov/plant/acp/treatment_maps.html.

Press releases, if issued, are prepared by the CDFA information officer and the county agricultural commissioner, in close coordination with the program leader responsible for treatment. Either the county agricultural commissioner or the public information officer serves as the primary contact to the media.

Information concerning the HLB/ACP program will be conveyed directly to local and State political representatives and authorities via letters, emails, and/or faxes.

Findings

HLB and ACP pose a significant and imminent threat to California's natural environment, agriculture, public and private property, and its economy.

The work plan involving chemical control of these pests is necessary to prevent loss and damage to California's natural environment, citrus industry, native wildlife, private and public property, and food supplies.

My decision to adopt findings and take action is based on FAC sections 24.5, 401.5, 403, 407, 408, 5401-5405, and 5761-5764.

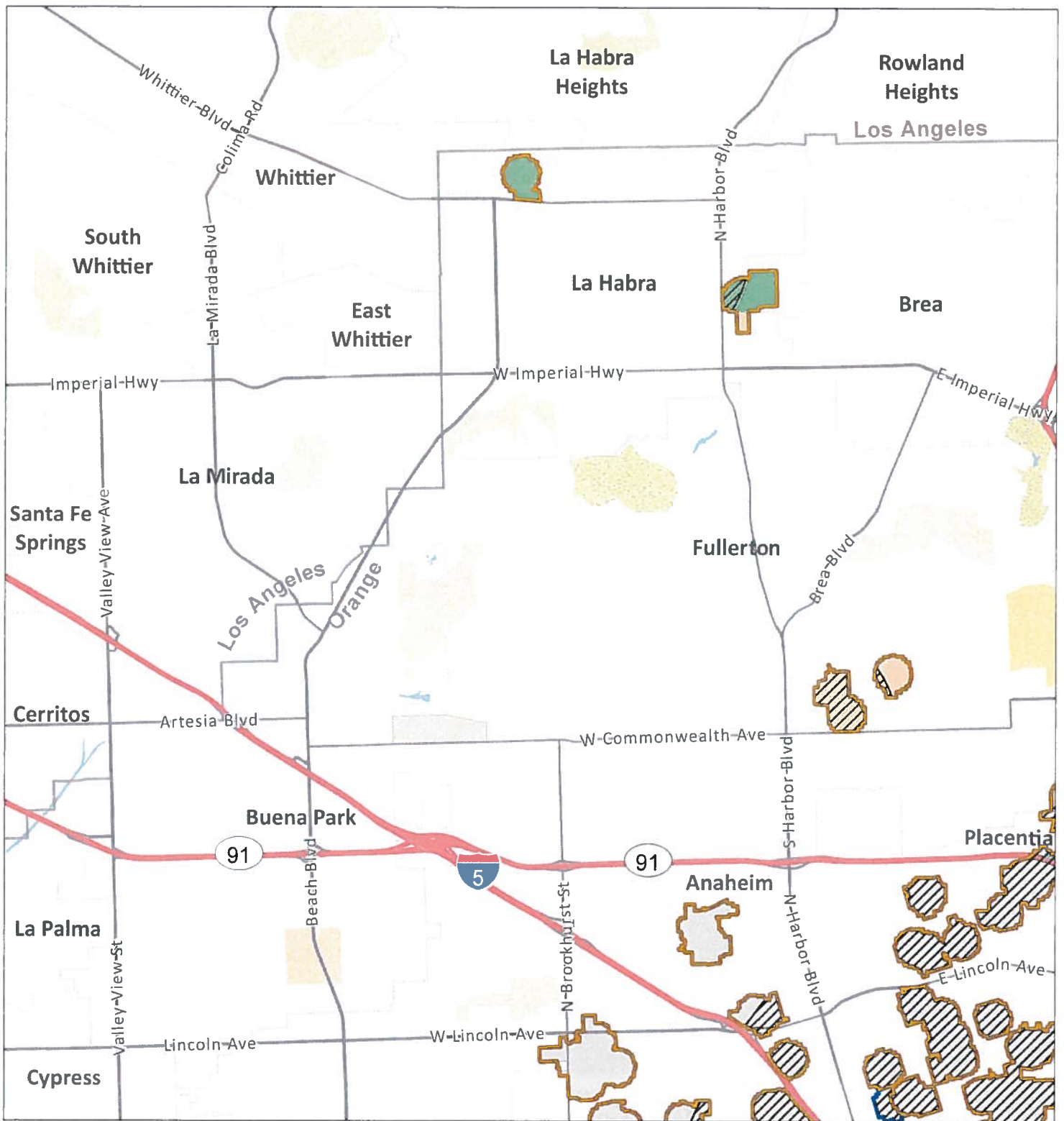
Karen Ross

Karen Ross, Secretary

Digitally signed by Karen Ross
Date: 2021.04.28 13:37:37
-07'00'

April 28, 2021

Date

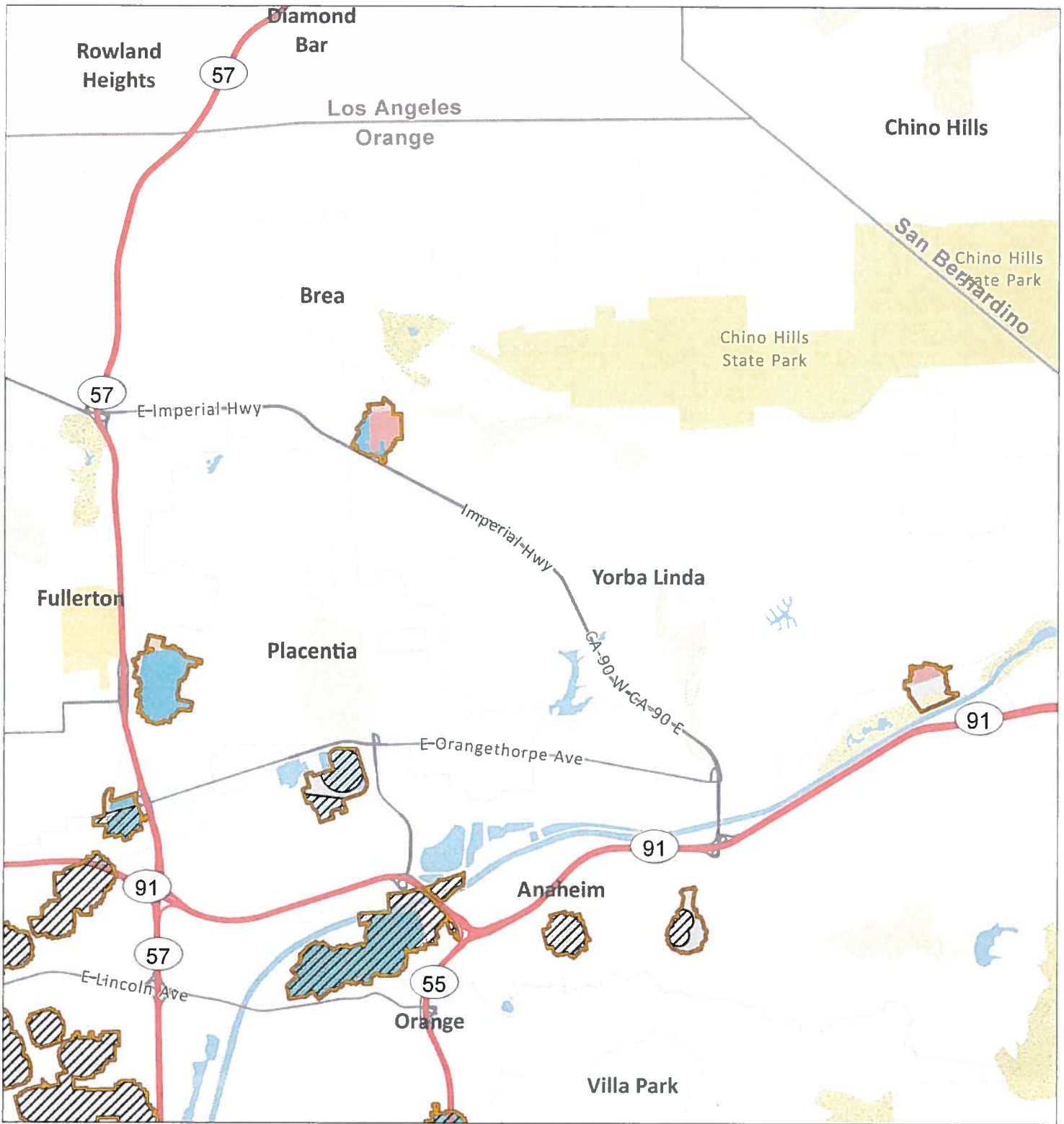


Asian Citrus Psyllid Program - Notification of Treatment Map
Orange County Amendment 29 (2021) - Portions of Orange County - Part 1



- | | | | | |
|---|---|------------------|------------|-------------|
| Existing Treatment Area | City or Census-Designated Place Within Treatment Area | | | |
| New Treatment Area | Anaheim | Huntington Beach | Placentia | Westminster |
| Environmental Sensitive Area: Treatment Mitigation in Place | Brea | Irvine | Santa Ana | Yorba Linda |
| | Fountain Valley | La Habra | Stanton | |
| | Fullerton | North Tustin | Tustin | |
| | Garden Grove | Orange | Villa Park | |

Date Map Printed: 4/21/2021



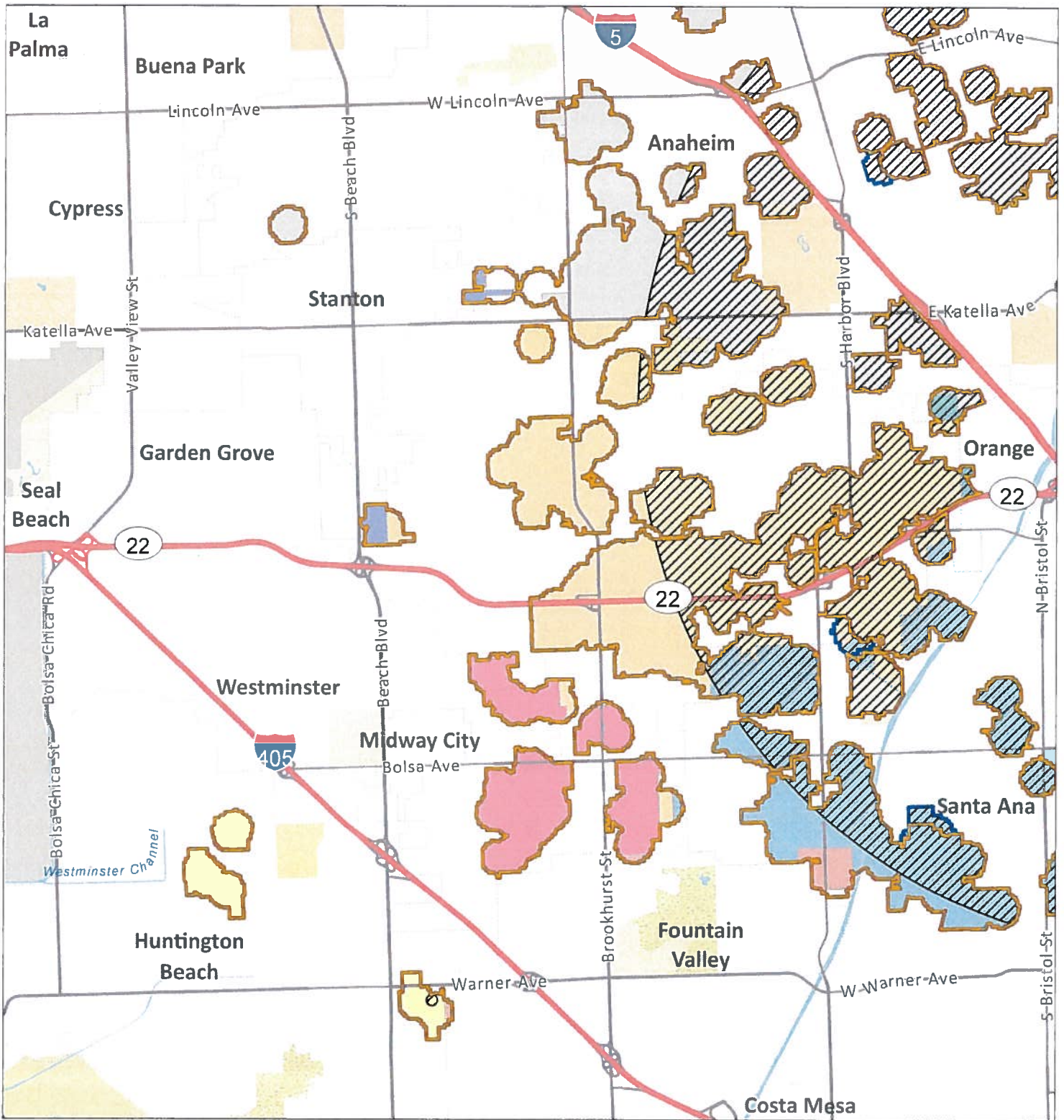
Asian Citrus Psyllid Program - Notification of Treatment Map
Orange County Amendment 29 (2021) - Portions of Orange County - Part 2

0 0.8 1.6
 Mi.



- | | | |
|---|---|------------------|
| Existing Treatment Area | City or Census-Designated Place Within Treatment Area | |
| New Treatment Area | Anaheim | Huntington Beach |
| Environmental Sensitive Area: Treatment Mitigation in Place | Brea | Irvine |
| | Fountain Valley | La Habra |
| | Fullerton | North Tustin |
| | Garden Grove | Orange |
| | Placentia | Westminster |
| | Santa Ana | Yorba Linda |
| | Stanton | |
| | Tustin | |
| | Villa Park | |

Date Map Printed: 4/21/2021

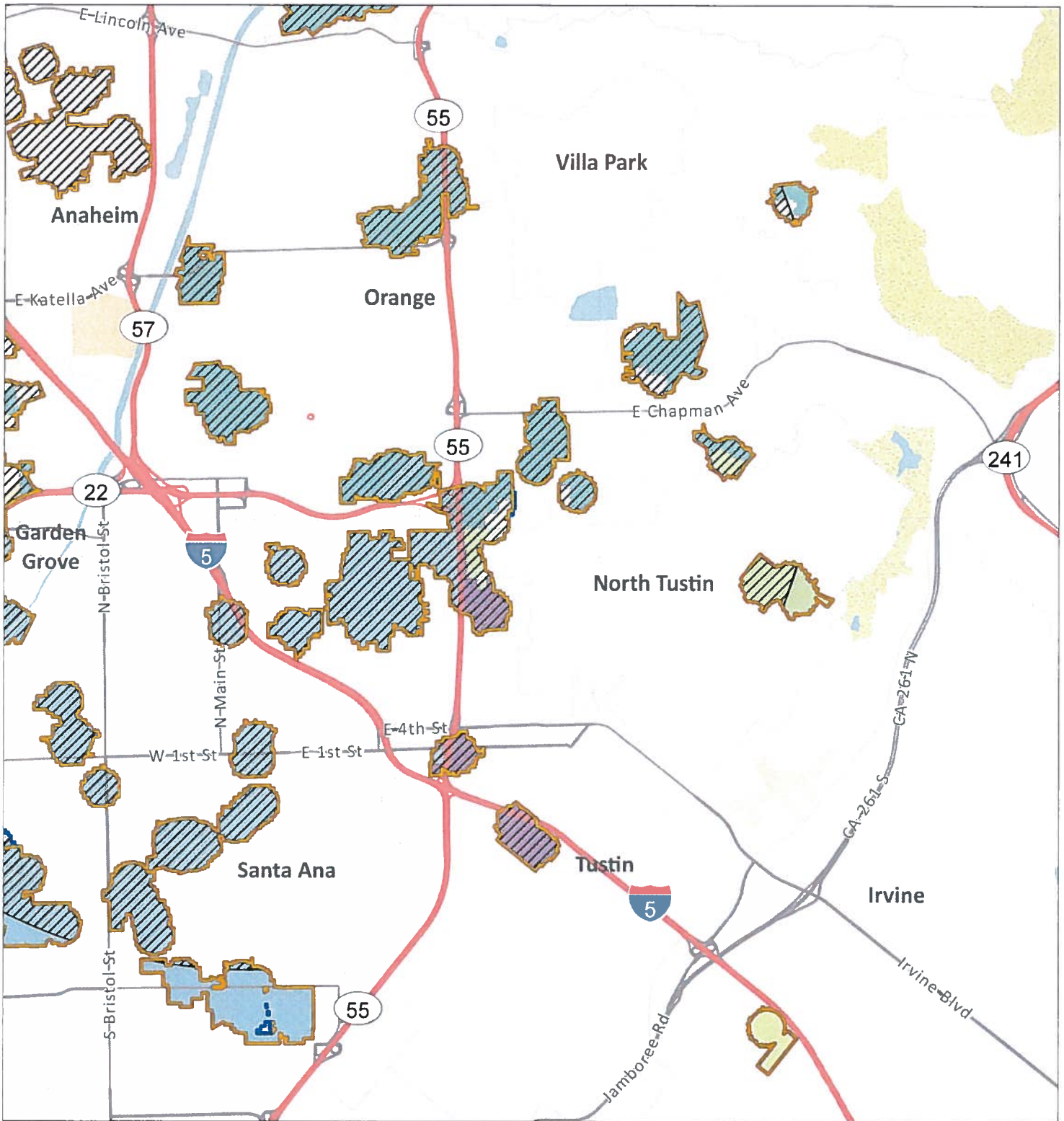


Asian Citrus Psyllid Program - Notification of Treatment Map
Orange County Amendment 29 (2021) - Portions of Orange County - Part 3



- | | | | |
|---|---|------------------|-------------|
| Existing Treatment Area | City or Census-Designated Place Within Treatment Area | | |
| New Treatment Area | Anaheim | Huntington Beach | Placentia |
| Environmental Sensitive Area: Treatment Mitigation in Place | Brea | Irvine | Westminster |
| | Fountain Valley | La Habra | Yorba Linda |
| | Fullerton | North Tustin | Stanton |
| | Garden Grove | Orange | Tustin |
| | | Villa Park | |

Date Map Printed: 4/21/2021



Asian Citrus Psyllid Program - Notification of Treatment Map
Orange County Amendment 29 (2021) - Portions of Orange County - Part 4



- | | | | | |
|---|---|------------------|------------|-------------|
| Existing Treatment Area | City or Census-Designated Place Within Treatment Area | | | |
| New Treatment Area | Anaheim | Huntington Beach | Placentia | Westminster |
| Environmental Sensitive Area: Treatment Mitigation in Place | Brea | Irvine | Santa Ana | Yorba Linda |
| | Fountain Valley | La Habra | Stanton | |
| | Fullerton | North Tustin | Tustin | |
| | Garden Grove | Orange | Villa Park | |

Date Map Printed: 4/22/2021

Asian Citrus Psyllid/Huanglongbing Work Plan
December 2020

I. Detection and Survey Activities for ACP

A. Urban and Rural Residential Detection Trapping and Visual Survey

Trapping for Asian citrus psyllid (ACP) is a cooperative State/County trapping program to provide early detection of an infestation in a county. Traps are serviced by either State or County agricultural inspectors. The trap used for ACP detection is the yellow panel trap, which is a cardboard panel coated with an adhesive on each side. ACP becomes entangled on the sticky surface and cannot move off the trap. Yellow panel traps have proven successful at detecting infestations of ACP. At all locations where traps are placed, the host plant is visually inspected for ACP. If ACP is detected, the host is visually surveyed for additional ACP and symptoms of Huanglongbing (HLB).

- Trap Density: Five to 16 traps/square mile.
- Trap Servicing Interval: Monthly.
- Trap Relocation and Replacement: Traps are relocated and replaced every four to eight weeks to another host with a minimum relocation distance of 500 feet.
- Visual surveys and/or tap sampling are conducted once at each trapping site when the trap is placed.

B. Commercial Grove Trapping

In counties with substantial commercial citrus production, and which are not generally infested with ACP, traps are placed within the groves at the density of one trap per 40 acres. Traps are replaced every two weeks and submitted for screening. In areas that are generally infested with ACP, agricultural inspectors visually survey commercial groves for plant tissue displaying symptoms of HLB and collect ACP which are tested for HLB.

C. Delimitation Trapping and Visual Survey Outside of the Generally Infested Area

The protocols below are the actions in response to the detection of ACP in counties north of Santa Barbara County and the Tehachapi Mountains.

1. Response to the Detection of One or More ACP

a. Trapping

ACP traps are placed at a density of 50 traps per square mile in a four-square mile delimitation area centered on the detection site. Traps are serviced weekly for one month. If no additional ACP are detected, the traps are serviced monthly for one year past the date the ACP was identified. Subsequent detections may increase the size of the delimitation survey area and restarts the one-year duration on the trap servicing requirement.

b. Visual Survey

All find sites and adjacent properties are visually surveyed for ACP and HLB. Additional sites may be surveyed as part of the risk-based survey.

II. Detection and Survey Activities for HLB

HLB Delimitation Survey

Upon confirmation of an HLB infected citrus tree (or host plant), a mandatory delimitation survey is initiated in the 250-meter radius area surrounding the detection. All host plants are visually surveyed for symptoms of HLB and presence of ACP. Plant and insect samples are collected

Asian Citrus Psyllid/Huanglongbing Work Plan
December 2020

from every host plant in the 250-meter area and subsequently analyzed for HLB-associated bacteria.

III. Treatment Activities

Treatment

The Citrus Pest and Disease Prevention Division (CPDPD) treatment activities for ACP vary throughout the state and depend on multiple factors.

Factors CPDPD considers prior to treatment include:

- Determination if suppression of ACP is feasible;
- The proximity of the ACP infestation to commercial citrus;
- Whether growers are conducting coordinated treatment activities;
- The level of HLB risk; and
- Consistency with the overall goal of protecting the state's commercial citrus production.

Scenarios Throughout the State in which Treatment Occurs:

- In areas with commercial citrus production that are generally infested with ACP, and where all growers are treating on a coordinated schedule, CPDPD may conduct residential buffer treatments to suppress ACP populations.
- In areas where HLB is detected, CPDPD conducts residential treatments to suppress ACP populations.
- In areas where ACP has not been previously detected, or where ACP has been detected at low densities, CPDPD conducts residential treatments in response to ACP detections to prevent ACP establishment or suppress populations.
- In areas where ACP has been detected along the California-Mexico border, CPDPD conducts residential treatments in response to ACP detections to suppress ACP populations.

CPDPD's current policy is to not conduct treatments in areas that are generally infested if there is limited or no commercial citrus production in the area, or if all growers in the area are not treating.

1. Treatment Protocols

A Program Environmental Impact Report (PEIR) has been certified which analyzes the ACP treatment program in accordance with Public Resources Code, Sections 21000 et seq. The PEIR is available at <http://www.cdfa.ca.gov/plant/peir>. The treatment activities described below are consistent with the PEIR.

In accordance with the integrated pest management principles, CPDPD has evaluated possible treatment methods and determined that there are no physical, cultural, or biological controls available to eliminate ACP from an area.

In general, when treatment has been deemed appropriate, CPDPD applies insecticides to host trees in the residential (urban) areas in a 50 to 800-meter radius around each detection site. Only ACP host plants are treated.

a. International Border Treatments

CPDPD treats citrus host plants in the residential area within two miles of the California-Mexico border. This treatment is conducted within a 400-meter buffer surrounding ACP

Asian Citrus Psyllid/Huanglongbing Work Plan
December 2020

detections that are within two miles of the California-Mexico border, within one year. In this case, a Notice of Treatment (NOT) is issued. A public meeting is held at least once a year.

b. Within a Generally Infested Area with Commercial Citrus Production

CPDPD treats citrus host plants within a 250-meter buffer surrounding commercial citrus groves if the growers are conducting coordinated treatments in 90 percent of the designated Psyllid Management Area (PMA) and have completed two out of three of the coordinated treatments. There is flexibility and an opportunity for treatment from CPDPD if growers are participating in these treatments for the first time and have achieved 90 percent participation in the PMA and if ACP have been detected within one mile of the commercial citrus groves within one year. The exception is Imperial County, which has fewer residential properties, and therefore residential citrus host plants are treated within 800 meters of commercial citrus. A NOT is issued. A public meeting is held at least once per year.

c. Outside of the Generally Infested Area

The actions below are in response to the detection of one or more ACP, whether collected live or in a trap, in counties north of Santa Barbara County and the Tehachapi Mountains.

- Detection of one ACP at one site - All properties with hosts within a 50-meter radius of the detection site are treated. A subsequent detection of one or more ACP within 400-meters will result in all properties with hosts within 400-meters of the detection site(s) being treated.
- Detection of two or more ACP at one site - All properties with hosts within a 400-meter radius of the detection site are treated.
- A NOT is issued.
- A public meeting is held at least once per year.

d. In response to an HLB Detection

- All properties within a 250-meter radius of the detection site are treated.
- A NOT is issued for HLB positive tree detections and ACP detections that are positive for the bacteria that causes HLB.
- All host plants found to be infected with HLB are destroyed.
 - Infected host plants are removed and destroyed by mechanical means.
- A Proclamation of an Emergency Program (PEP) is issued for HLB positive tree detections.
- A public meeting is held at least once per year.

2. Treatment Methodology

The treatment protocol consists of both a foliar and a systemic insecticide. The foliar Insecticide is used for immediate reduction of the adult population in order to prevent the adults from dispersal. The systemic insecticide is a soil treatment used to kill the sedentary nymphs and provide long term protection against reinfestation. Treatment frequency is dependent on the insecticide applied and severity of the infestation. Treatments will end no later than two years after the last psyllid detection in the treatment area.

Asian Citrus Psyllid/Huanglongbing Work Plan
December 2020

CPDPD uses registered pesticides and follows the label directions. The treatment protocol may be adjusted to use only the foliar or the systemic insecticide to allow for mitigations in special situations.

a. Foliar Treatment

Tempo® SC Ultra (cyfluthrin) is a pyrethroid contact insecticide. Treatment initially occurs once, and subsequent applications may occur for up to three times annually if additional psyllids are detected. This material is applied to the foliage of all host plants using hydraulic spray or hand spray equipment.

b. Soil Treatment

A systemic soil application is made using either Merit® 2F or CoreTect™.

- Merit® 2F (imidacloprid), is a neonicotinoid systemic insecticide. Treatment initially occurs once, and a subsequent application may occur once on an annual basis if additional psyllids are detected. This material is applied to the soil within the root zone of host plants.
- CoreTect™ (imidacloprid) is a neonicotinoid systemic insecticide. It is used in place of Merit® 2F in situations where there are environmental concerns about soil surface runoff of the liquid Merit® 2F formulation, such as host plants growing next to ponds and other environmentally sensitive areas. Treatment initially occurs once, with a subsequent application once on an annual basis if additional psyllids are detected. This material is a pelletized tablet and is inserted into the soil and watered in within the root zone of host plants.

**INTEGRATED PEST MANAGEMENT ANALYSIS OF ALTERNATIVE TREATMENT
METHODS FOR CONTROL OF THE ASIAN CITRUS PSYLLID AND HUANGLONGBING
May 2018**

The treatment program used by the California Department of Food and Agriculture (CDFA) for control of the Asian citrus psyllid (ACP), *Diaphorina citri* (Hemiptera: Psyllidae), and the disease it transmits, namely Huanglongbing, *Candidatus Liberibacter asiaticus*, targets multiple life stages. A contact insecticide is used for an immediate control of ACP adults in order to prevent spread, and a systemic insecticide is used to control developing ACP nymphs and to give the plant long term protection from re-infestation. The contact insecticide preferentially used contains the synthetic pyrethroid cyfluthrin, while the systemic insecticide contains the synthetic neonicotinoid imidacloprid. Both products have been shown to be effective against ACP elsewhere, particularly in Florida. In addition, HLB-infected plants are removed in their entirety and destroyed, in order to remove a reservoir for the disease. The California Huanglongbing Task Force, a joint government, university, and industry group formed in 2007 to provide guidance to the CDFA on matters pertaining to ACP and HLB has endorsed the use of these chemicals in the CDFA's treatment program.

Below is an evaluation of alternative treatment methods to control ACP and HLB which have been considered for treatment programs in California.

A. PHYSICAL CONTROL

Mass Trapping. Mass trapping of adults involves placing a high density of traps in an area in an attempt to physically remove them before they can reproduce. The current available trapping system for ACP relies on short distance visual stimulus, and is not considered effective enough to use in a mass trapping program.

Active Psyllid Removal. Adult ACPs are mobile daytime fliers, and adults could theoretically be netted or collected off of foliage. However, due to their ability to fly when disturbed, and the laborious and time-prohibitive task of collecting minute insects from several properties by hand, it would be highly unlikely that all adults could be captured and removed. Nymphs attach themselves to developing leaves and stems via their proboscis. Therefore, physical removal of the nymphs would entail removal of the growing shoots which will stunt the tree and reduce fruit production. For these reasons, mechanical control is not considered to be an effective alternative.

Host Removal. Removal of host plants for ACP would involve the large-scale destruction of plants and their roots by either physical removal or phytotoxic herbicides. Additionally, host removal could promote dispersal of female psyllids in search of hosts outside of the treatment area, thus spreading the infestation. For these reasons, host removal is considered inefficient and too intrusive to use over the entirety of the treatment areas used for ACP. However, physical host removal of HLB-infected plants in their entirety is used for HLB control, because it is limited in scope to just the infected tree and it is effective at eliminating the disease reservoir, thereby preventing further spread of the disease by ACP.

B. CULTURAL CONTROL

Cultural Control. Cultural controls involve the manipulation of cultivation practices to reduce the prevalence of pest populations. These include crop rotation, using pest-resistant varieties, and intercropping with pest-repellent plants. None of these options are applicable for ACP control in an urban environment, and may only serve to drive the psyllids outside the treatment area, thus spreading the infestation.

C. BIOLOGICAL CONTROL

Microorganisms. No single-celled microorganisms, such as bacteria, are currently available to control ACP.

Nematodes. Entomopathogenic nematodes can be effective for control of some soil-inhabiting insects, but are not effective, nor are they used, against above ground insects such as psyllids.

Parasites and Predators. There have been two parasites released in Florida against ACP, but only one of these are considered somewhat successful there, namely *Tamarixia radiata* (Hymenoptera: Eulophidae). This insect has been released into the environment in southern California. The CDFA is working with the citrus industry to pursue options for incorporating this parasite into treatment programs statewide. In addition, a second wasp has been recently released by the University of California Riverside, *Diaphorencyrtus aligarhensis*.

Sterile Insect Technique (SIT). SIT involves the release of reproductively sterile insects which then mate with the wild population, resulting in the production of infertile eggs. SIT has neither been researched nor developed for ACP, nor has it been developed for any species of psyllids, and is therefore unavailable.

D. CHEMICAL CONTROL

Foliar Treatment. A number of contact insecticides have been researched for use against ACP elsewhere, particularly in Florida. Contact insecticides are more effective against adult ACPs than the sedentary nymphs because adults actively move around on plants, thereby coming into contact with residues, whereas nymphs have to be directly sprayed in order for them to come into contact. The following product has been identified for use by the CDFA, based on a combination of effectiveness against ACP, worker and environmental safety, and California registration status.

Tempo® SC Ultra is a formulation of cyfluthrin which is applied to the foliage of all host plants. Tempo® SC Ultra is a broad-spectrum synthetic pyrethroid insecticide which kills insects on contact. Tempo® SC Ultra has no preharvest interval, which makes it compatible with residential fruit-growing practices.

Soil Treatment. A number of systemic insecticides have been researched for use against ACP elsewhere, particularly in Florida. Systemic insecticides are particularly effective against psyllid nymphs because nymphs spend much of their time feeding, thereby acquiring a lethal dose. The following products have been identified for use by the CDFA, based on a combination of effectiveness against ACP, worker and environmental safety, and California registration status.

Merit® 2F is a formulation of imidacloprid which is applied to the root system of all host plants via a soil drench. Imidacloprid is a synthetic neonicotinoid insecticide which controls a number of other phloem feeding pests such as psyllids, aphids, mealybugs, etc.

CoreTect™ is a formulation of imidacloprid which is applied to the root system of all host plants via insertion of a tablet into the soil, followed by watering. It is used in place of Merit® 2F in situations where there are environmental concerns about soil surface runoff of the liquid Merit® 2F formulation, such as host plants growing next to ponds and other environmentally sensitive areas.

E. RESOURCES

Grafton-Cardwell, E. E. and M. P. Daugherty. 2013. Asian citrus psyllid and huanglongbing disease. Pest Notes Publication 74155. University of California, Division of Agriculture and Natural Resources Publication 8205. 5 pp.
<http://www.ipm.ucdavis.edu/PDF/PESTNOTES/pnasiancitruspsyllid.pdf>.

Grafton-Cardwell, E. E., J. G. Morse, N. V. O'Connell, P. A. Phillips, C. E. Kallsen, and D. R. Haviland. 2013. UC IPM Management Guidelines: Citrus. Asian Citrus Psyllid. Pest Notes Publication 74155. University of California, Division of Agriculture and Natural Resources. <http://www.ipm.ucdavis.edu/PMG/r107304411.html>.

PEST PROFILE

Common Name: Asian Citrus Psyllid

Scientific Name: *Diaphorina citri* Kuwayama

Order and Family: Hemiptera, Psyllidae

Description: The Asian citrus psyllid (ACP) is 3 to 4 millimeters long with a brown mottled body. The head is light brown. The wings are broadest in the apical half, mottled, and with a dark brown band extending around the periphery of the outer half of the wing. The insect is covered with a whitish waxy secretion, making it appear dusty. Nymphs are generally yellowish orange in color, with large filaments confined to an apical plate of the abdomen. The eggs are approximately 0.3 millimeters long, elongated, and almond-shaped. Fresh eggs are pale in color, then, turn yellow, and finally orange at the time of hatching. Eggs are placed on plant tissue with the long axis vertical to the surface of the plant.

History: Asian citrus psyllid was first found in the United States in Palm Beach County, Florida, in June 1998 in backyard plantings of orange jasmine. By 2001, it had spread to 31 counties in Florida, with much of the spread due to movement of infested nursery plants. In the spring of 2001, Asian citrus psyllid was accidentally introduced into the Rio Grande Valley, Texas on potted nursery stock from Florida. It was subsequently found in Hawaii in 2006, in Alabama, Georgia, Louisiana, Mississippi, and South Carolina in 2008. ACP was first found in California on August 27, 2008 in San Diego County. Subsequent to this initial detection in San Diego County, the ACP has been detected in Fresno, Imperial, Kern, Los Angeles, Orange, Riverside, San Bernardino, San Luis Obispo, Santa Barbara, Tulare, Ventura, Marin, Monterey, San Francisco, and Santa Clara counties. The ACP has the potential to establish itself throughout California wherever citrus is grown.

Distribution: ACP is found in tropical and subtropical Asia, Afghanistan, Saudi Arabia, Reunion, Mauritius, parts of South and Central America, Mexico, the Caribbean, and in the U.S. (Alabama, Arizona, California, Florida, Georgia, Hawaii, Louisiana, Mississippi, South Carolina, and Texas).

Life Cycle: Eggs are laid on tips of growing shoots; on and between unfurling leaves. Females may lay more than 800 eggs during their lives. Nymphs pass through five instars. The total life cycle requires from 15 to 47 days, depending on environmental factors such as temperature and season. The adults may live for several months. There is no diapause, but populations are low in the winter or during dry periods. There are nine to ten generations a year, with up to 16 noted under observation in field cages.

Hosts and Economic Importance: ACP feeds mainly on *Citrus* spp., at least two species of *Murraya*, and at least three other genera, all in the family Rutaceae. Damage from the psyllids occurs in two ways: the first by drawing out of large amounts of sap from the plant as they feed and, secondly, the psyllids produce copious amounts of honeydew. The honeydew then coats the leaves of the tree, encouraging sooty mold to grow which blocks sunlight to the leaves. However, the most serious damage caused by ACP is due to its ability to effectively vector three phloem-inhabiting bacteria in the genus *Candidatus* Liberibacter, the most widespread being *Candidatus* Liberibacter asiaticus. These bacteria cause a disease known as huanglongbing, or citrus greening. In the past, these bacteria have been extremely difficult to detect and

characterize. In recent years, however, DNA probes, electron microscopy, and enzyme-linked immunosorbent assay tests (ELISA) have been developed that have improved detection. Symptoms of huanglongbing include yellow shoots, with mottling and chlorosis of the leaves. The juice of the infected fruit has a bitter taste. Fruit does not color properly, hence the term "greening" is sometimes used in reference to the disease. Huanglongbing is one of the most devastating diseases of citrus in the world. Once infected, there is no cure for disease and infected trees will die within ten years. The once flourishing citrus industry in India is slowly being wiped out by dieback. This dieback has multiple causes, but the major reason is due to HLB.

Host List

SCIENTIFIC NAME

Aegle marmelos
Aeglopsis chevalieri
Afraegle gabonensis
Afraegle paniculata
Amyris madrensis
Atalantia monophylla
Atalantia spp.
Balsamocitrus dawei
Bergia (=Murraya) *koenigii*
Calodendrum capense
X Citroncirus webberi
Choisya arizonica
Choisya ternate
Citropsis articulata
Citropsis gilletiana
Citropsis schweinfurthii
Citrus aurantiifolia

Citrus aurantium

Citrus hystrix
Citrus jambhiri
Citrus limon
Citrus madurensis
(=X *Citrofortunella microcarpa*)
Citrus maxima
Citrus medica
Citrus meyeri
Citrus × nobilis
Citrus × paradisi
Citrus reticulata
Citrus sinensis
Citrus spp.
Clausena anisum-olens
Clausena excavata
Clausena indica
Clausena lansium

COMMON NAMES

bael, Bengal quince, golden apple, bela, milva
Chevalier's aeglopsis
Gabon powder-flask
Nigerian powder-flask
mountain torchwood
Indian atalantia

Uganda powder-flask
curry leaf
Cape chestnut

Arizonia orange
Mexican or mock orange
Katimboro, Muboro, West African cherry orange
cherry-orange
African cherry-orange
lime, Key lime, Persian lime, lima, limón agrio, limón ceutí, lima mejicana, limero
sour orange, Seville orange, bigarde, marmalade orange, naranja agria, naranja amarga
Mauritius papeda, Kaffir lime
rough lemon, jambhiri-orange, limón rugoso, rugoso
lemon, limón, limonero
calamondin

pummelo, pomelo, shaddock, pompelmous, toronja
citron, cidra, cidro, toronja
Meyer lemon, dwarf lemon
king mandarin, tangor, Florida orange, King-of-Siam
grapefruit, pomelo, toronja
mandarin, tangerine, mandarina
sweet orange, orange, naranja, naranja dulce

anis
clausena
clausena
wampi, wampee

<i>Clymenia polyandra</i>	a-mulis
<i>Eremocitrus glauca</i>	Australian desert lime
<i>Eremocitrus</i> hybrid	
<i>Esenbeckia berlandieri</i>	Berlandier's jopoy
<i>Fortunella crassifolia</i>	Meiwa kumquat
<i>Fortunella margarita</i>	Nagami kumquat, oval kumquat
<i>Fortunella polyandra</i>	Malayan kumquat
<i>Fortunella</i> spp.	
<i>Limonia acidissima</i>	Indian wood apple
<i>Merrillia caloxylon</i>	flowering merrillia
<i>Microcitrus australasica</i>	finger-lime
<i>Microcitrus australis</i>	Australian round-lime
<i>Microcitrus papuana</i>	desert-lime
X <i>Microcitronella</i> spp.	
<i>Murraya</i> spp.	curry leaf, orange-jasmine, Chinese-box, naranjo jazmín
<i>Naringi crenulata</i>	naringi
<i>Pamburus missionis</i>	
<i>Poncirus trifoliata</i>	trifoliolate orange, naranjo trébol
<i>Severinia buxifolia</i>	Chinese box-orange
<i>Swinglea glutinosa</i>	tabog
<i>Tetradium ruticarpum</i>	evodia, wu zhu yu
<i>Toddalia asiatica</i>	orange climber
<i>Triphasia trifolia</i>	trifoliolate limeberry, triphasia
<i>Vepris (=Toddalia) lanceolata</i>	white ironwood
<i>Zanthoxylum fagara</i>	wild lime, lime prickly-ash



 **United States Department of Agriculture**
Animal and Plant Health Inspection Service

 **United States Department of Agriculture**
Agricultural Research Service

Briefing Paper: Recent changes in the ACP/HLB invasion in California and implications for regional quarantines

Date: 11/22/2017

Neil McRoberts, Carla Thomas, Brianna McGuire

Quantitative Biology & Epidemiology Lab, Plant Pathology Department, UC Davis, CA 95616

Beth Grafton Cardwell

Department of Entomology, UC Riverside & UC Lindcove Research and Extension Center, Exeter, CA 93221

David Bartels

USDA-APHIS-PPQ, Field Operations – Data Analysis, Risk, and Targeting, 2150 Centre Ave., Bldg B., 3E14, Fort Collins, CO 80526

Tim Gottwald

USDA-ARS, U.S. Horticultural Research Laboratory, 2001 S. Rock Road, Fort Pierce, FL 34945

State-wide background risk level for HLB

Since 2012, a background risk level for HLB in both residential and commercial citrus in each square mile of interest has been calculated 2-3 times per year using a risk model developed in Florida and adapted for use in California (Gottwald et al., 2014). The model uses a range of risk variables including census data, topography, land use, and known incidence of both HLB and Asian Citrus Psyllid (ACP) to produce a risk value ranging from 0 (extremely low risk) to 1 (very high risk) that applies to each square mile. Figure 1 shows the current risk status across the state at a county level, where the risk level applied to the county is the highest value for any individual square mile within that county

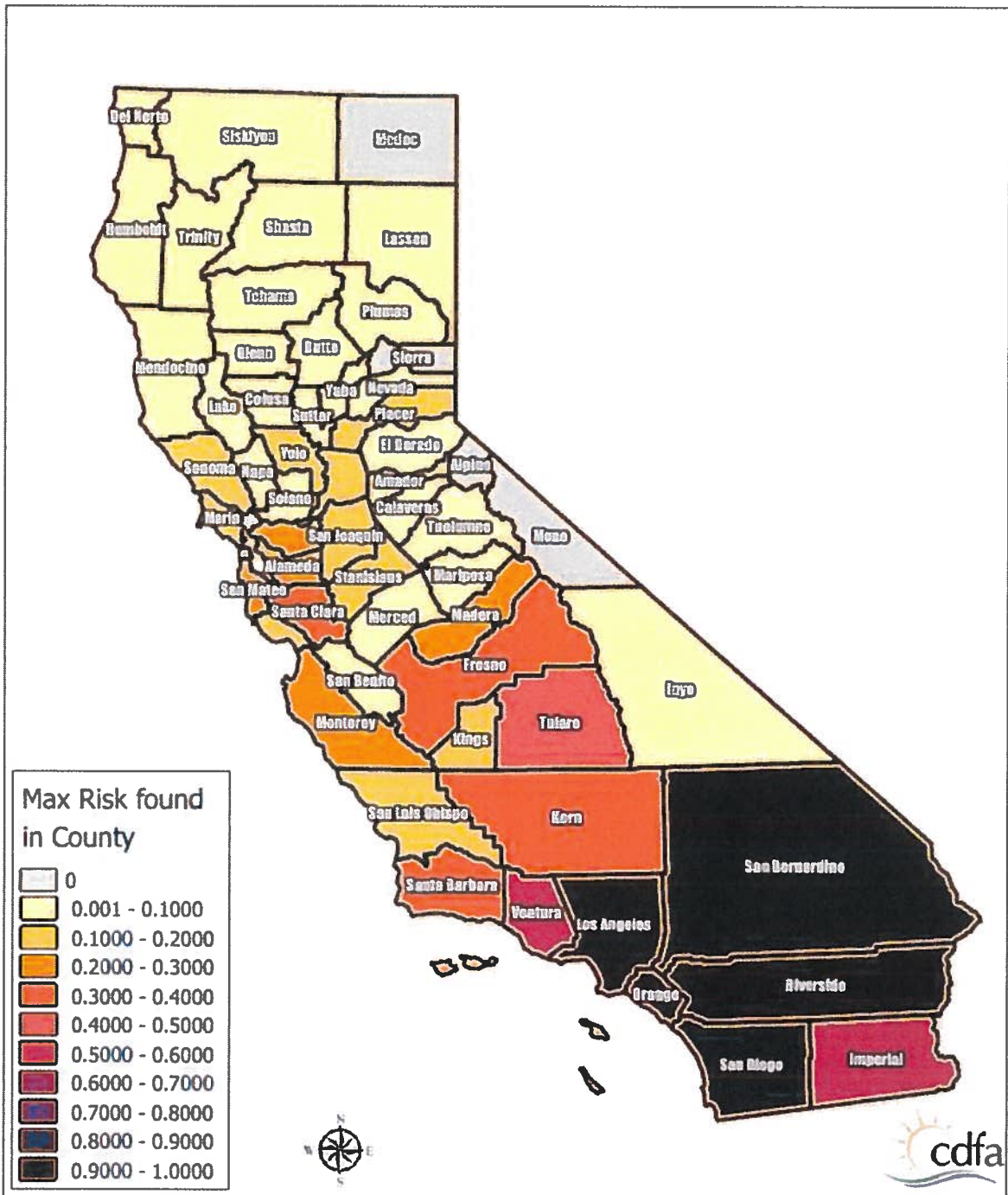


Figure 1. Maximum HLB risk level by county across California as estimated by the USDA-ARS HLB risk model.

In Figure 1 note that the risk level is generally higher in the south than north, because of the known presence of HLB and large ACP population in the southern counties. Note also that in northern California even counties with only a few ACP detections – for example Santa Clara County – may still have

relatively high risk levels because of population census data that indicate the background risk of the presence of infected citrus in private yards is relatively high. To illustrate this point further, Figure 2 shows the San Francisco Bay Area in more detail.

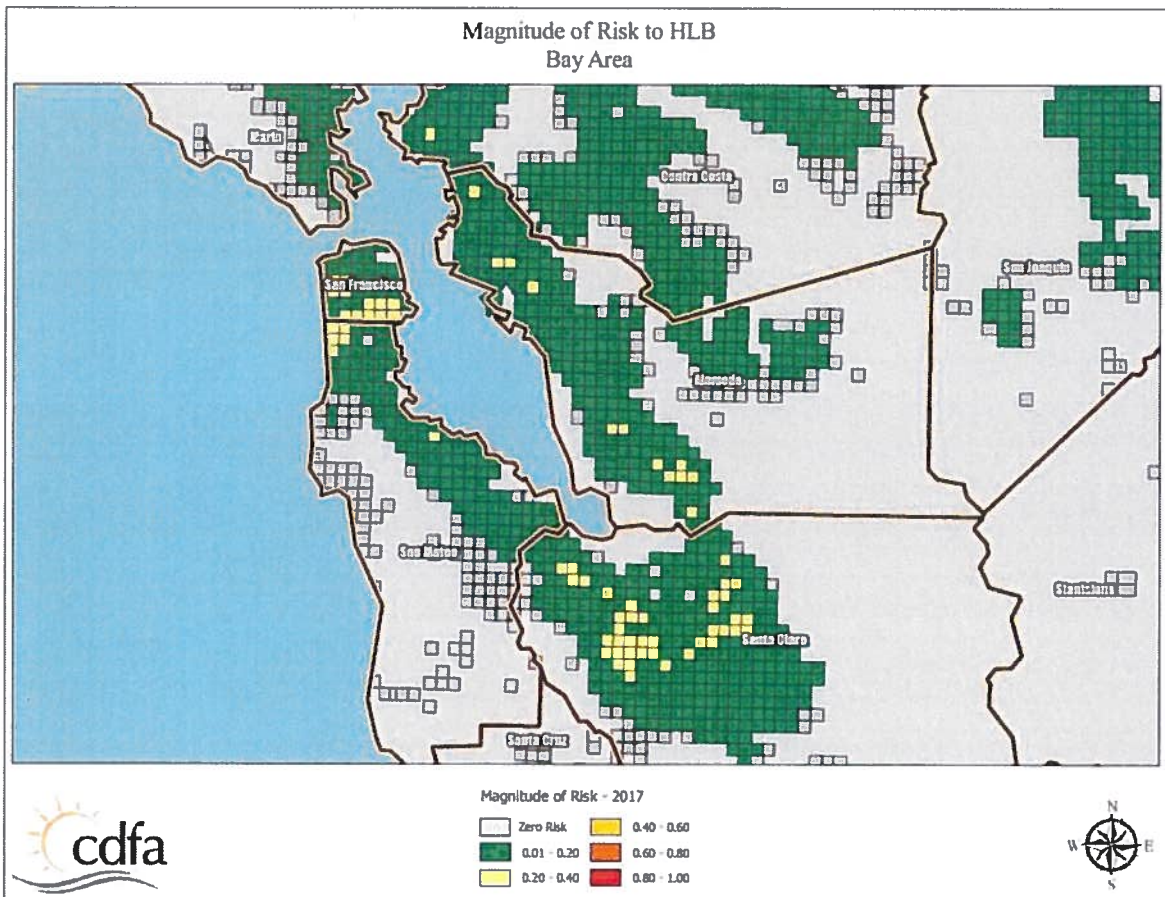
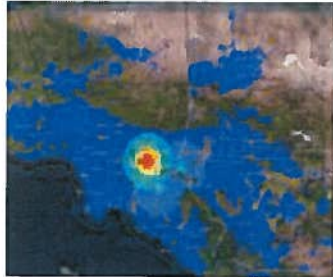


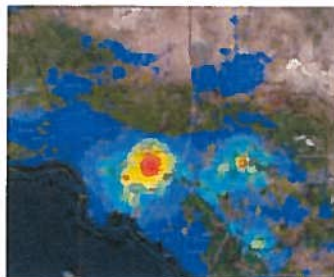
Figure 2. Individual square mile HLB risk levels for the San Francisco Bay Area. Note that the general risk level is low, but there are pockets of moderately high risk in San Francisco itself, and more noticeably in San Jose, associated with population census risk factors; ACP detections in this area is still low and sporadic.

While the background risk of HLB is strongly dependent on factors which are either static (e.g. topography) or change only slowly (e.g. human socio-economic factors) the presence of the ACP vector of the pathogen introduces a large dynamic component into the risk level across the state. To illustrate the impact of the vector population on changing risk status for HLB Figure 3 shows changes in HLB risk for the proposed quarantine areas 5 (San Diego, Imperial and Eastern Riverside) and 6 (LA, Western Riverside, San Bernardino and Orange). The risk level is shown as a blue-to-red heat map with higher risk indicated by darker red color and lower risk indicated by darker blue color; a time series of six periods is shown for each area.

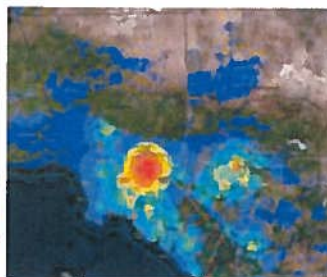
Zone 6, 2012-13



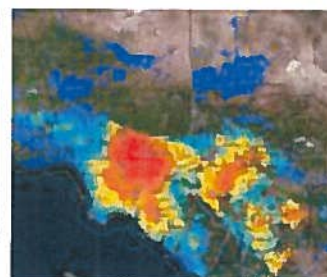
Zone 6, 2013-14



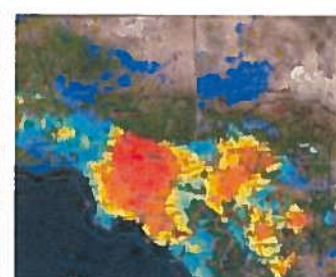
Zone 6, 2014-15



Zone 6, 2015-16



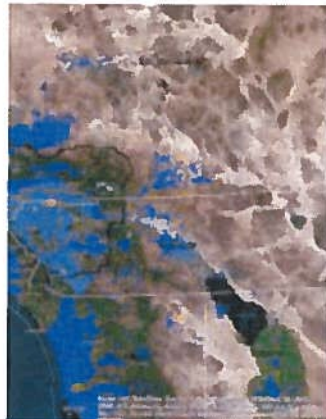
Zone 6, 2016-17



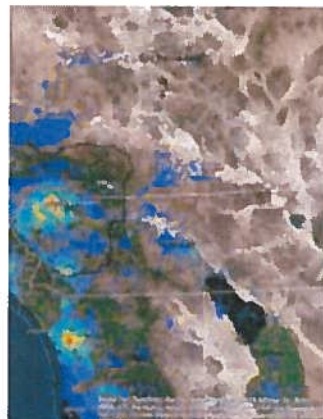
Zone 5, 2012-13



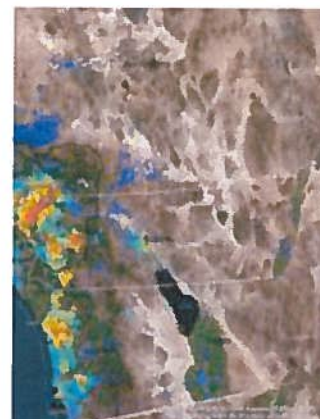
Zone 5, 2013-14



Zone 5, 2014-15



Zone 5, 2015-16



Zone 5, 2016-17

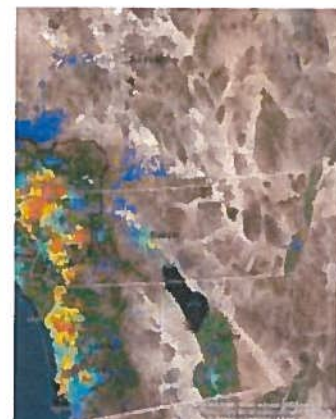


Figure 3. Changes in background risk of HLB in proposed quarantine areas 5 and 6 from 2012 to present. Red color indicates high risk, blue indicates low risk. Note that the location of the early HLB detections in Hacienda Heights and San Gabriel falls inside the single high-risk area predicted in 2012. The progressive increase in risk in both areas is apparent with the passage of time. All known cases of HLB are in proposed Quarantine Area 6.

Figure 3 tells us at least two useful things about HLB risk. First, note that in 2012-13 the only area of predicted high risk was centered on Hacienda Heights and San Gabriel, the locations of the first HLB discoveries in California; in other words, the risk model correctly anticipated the presence of HLB. Also note that the model also highlighted the focus of high risk in the city of Riverside as early as 2013-14; this outbreak emerged in 2017. These results are important for interpreting the presence of areas of elevated risk in places such as San Jose. Second, the pattern of change in risk in both areas 5 and 6 is a steady increase, spreading out from the original high risk area in LA, but also with additional foci developing at locations quite distant from the original focus. These changes are associated mainly with the spread of ACP through the region and the patterns of population density of the insect recorded in the risk-based surveys.

Taken together the results presented in this section highlight two important aspects of HLB risk that are relevant to quarantine regulations:

1. Because HLB-affected citrus plant material can be propagated and spread by human activity, the risk of HLB and ACP are to some extent independent, particularly in areas that are not generally infested with ACP.
2. **The risk of HLB can exist before the arrival of the vector** in an area because HLB-affected plant material is often brought to an area by human activities.

After ACP infests an area with pre-existing infected trees present, the vector population eventually comes into contact with the infected trees and foci of disease begin to build around them. This is because ACP acquires the pathogen from the infected trees and establishes a recurring cycle of infection and acquisition. Because trees remain asymptomatic for a long period of time, spread in the absence of detection and tree removal can occur.

Reducing disease spread by quarantines

The basic principle of underlying the use of quarantines is to restrict the spread of disease by sub-dividing an area into smaller regions and limiting the opportunities for disease to spread from one region to another. In the case of invasive and highly mobile diseases, quarantines should be applied early and rigorously to have the largest effect on disease spread. Importantly, quarantines do not have to be 100% effective to be worth imposing. If the incursion of the disease into generally uninfected areas can be limited to a low rate, and psyllid populations can be kept low, local eradications can be achieved when new incursions are detected.

The basic idea of setting up quarantine regions within the state is an ecological analogue of the idea of constructing a ship using multiple watertight compartments; even if one compartment is flooded, as long as the flow of water is negligible to the other compartments the ship won't sink. In instituting a quarantine policy, the aim is to limit the flow of vectors and disease throughout the state and thus safeguard the industry and homeowners as a whole.

Recent changes in the dynamics of HLB/ACP detections

Until recently, the rate of accumulation of new positive ACP and tree detections had been relatively stable. Over the last 6 months there has been a dramatic increase in the rate of new detections of HLB infections in both ACP and citrus trees. In addition, there has been a recent increase in the number of cities in which positive finds have been reported and a sharp increase in the number of ACP nymph detections. These results are summarized in Figures 4 through 7.

Taken together the results indicate an exponential increase in the intensity of the HLB epidemic at multiple scales. The pathogen is becoming more prevalent in the vector population and in the tree population. At the same time, the upswing in nymphal detections indicates that the transmission rate is increasing and the increase in the number of cities with positive detections indicates that the geographic extent of the epidemic is increasing rapidly.

Most of these changes have become apparent only in the last 6 months. Given the very sharp increase in the intensity of the epidemic, a rapid response is needed to implement additional measures to slow the rate of spread of HLB beyond its current range before the opportunity is lost.

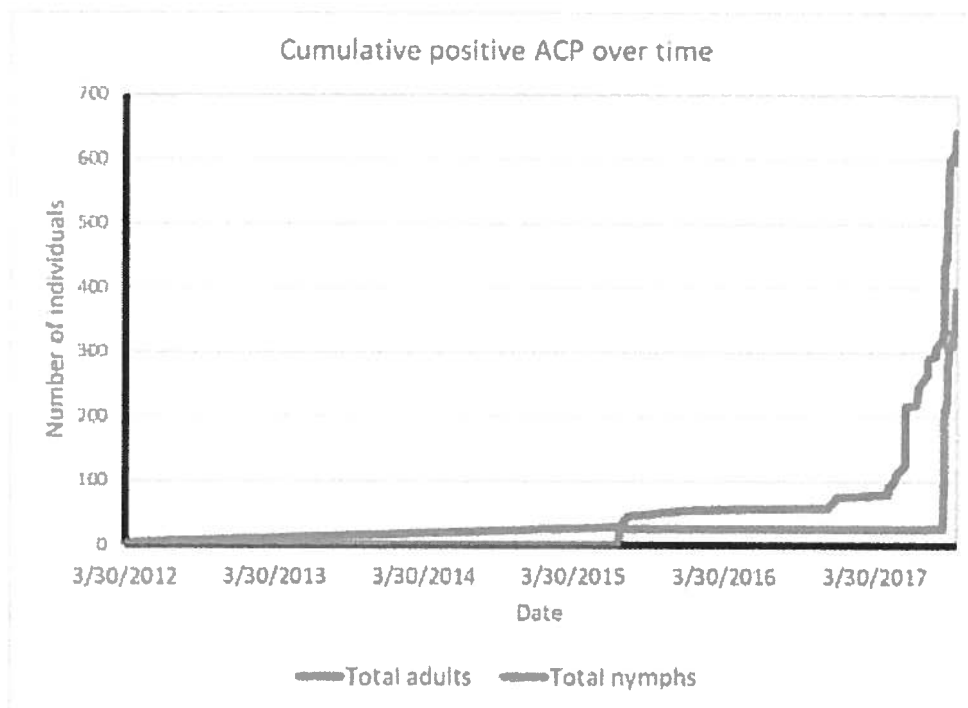


Figure 4: Cumulative counts of PCR-positive ACP samples collected in California over time since 2012. Note the sharp increase in the rate of accumulation from mid-2017 onwards.

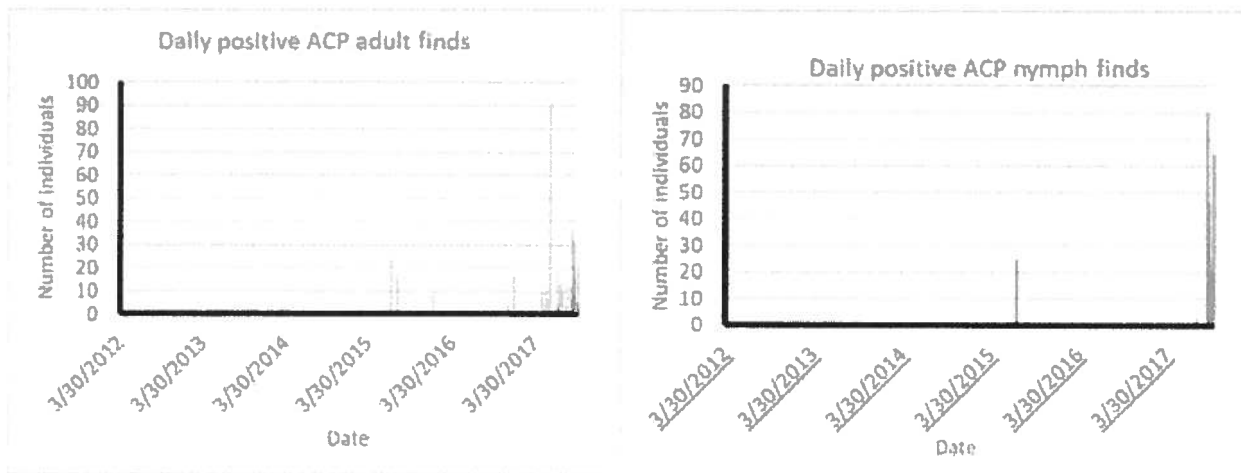


Figure 5: Daily discovery rate for PCR-positive ACP (adults and nymphs are shown separately). Note the sharp increase in finds toward the end of 2017, particularly for nymphs which had largely been absent from positive samples until recent detections.

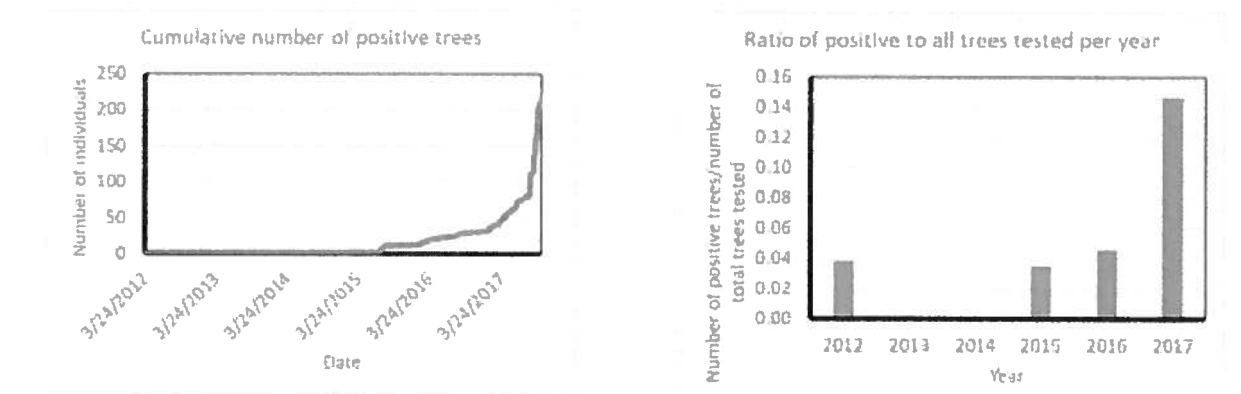


Figure 6: PCR-positive tree detections over time. In the left panel the cumulative number of detections is shown, highlighting the exponential increase in 2017. In the right panel the ratio of positive trees to all trees tested per year is shown. Note that until 2017 the ratio had been more or less stable at approximately 5%, but has nearly tripled in 2017 to just under 15%.

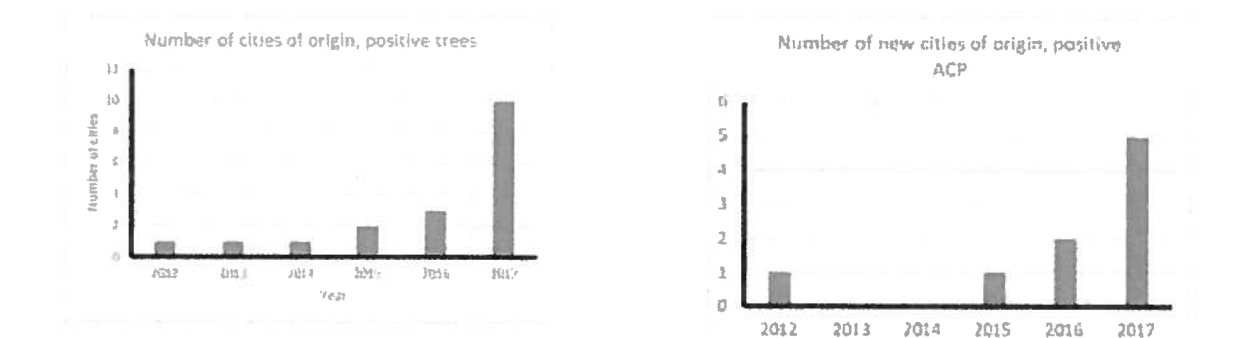


Figure 7: Numbers of cities with PCR-positive ACP detections over time. The left panel shows the cumulative figure, the right panel shows the number of new cities per year. Mirroring the results for trees and for ACP, note the sharp increase in 2017. These results indicate that the epidemic is intensifying across several spatial scales at a very high rate.

Changes in diagnostic results on tested Asian Citrus Psyllids

The previous section detailed the recent sharp increases in PCR detections for ACP and trees. These increases indicate that the pathogen population is growing and this can be seen directly by considering the Ct values in qPCR tests. Results highlighting the increase in the pathogen population are shown here in Figures 8 and 9.

Figure 8 shows the data for qPCR Ct values obtained from psyllid samples collected in different sampling cycles of the survey program. The data are sub-divided into samples obtained from inside and outside the existing HLB quarantine areas. It can be seen that the Ct values obtained from ACP samples inside the quarantine areas are showing a much faster increase in the proportion of low values (CT <32 to 33), indicating an intensification of the pathogen population in the vector population.

The presence of some ACP with low qPCR Ct values outside the existing quarantine areas highlights the risk of ACP moving the disease around and the need for quarantine regulations that apply at a larger scale than the current radius around confirmed HLB-positive trees.

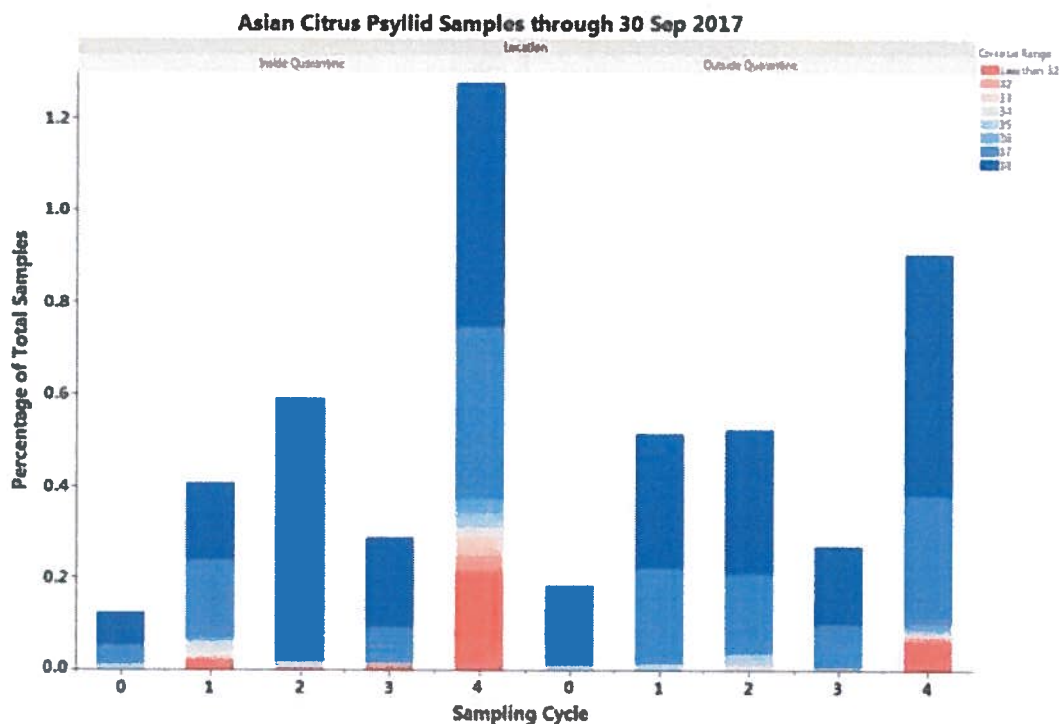


Figure 8: qPCR test results on ACP samples tested by CDFA through 30 September 2017. Note that the proportion of light blue and red (indicating presence of the HLB pathogen) in the samples from inside the quarantine areas (left panel) has increased over time, whereas no corresponding change is apparent in samples outside the quarantine areas (right panel).

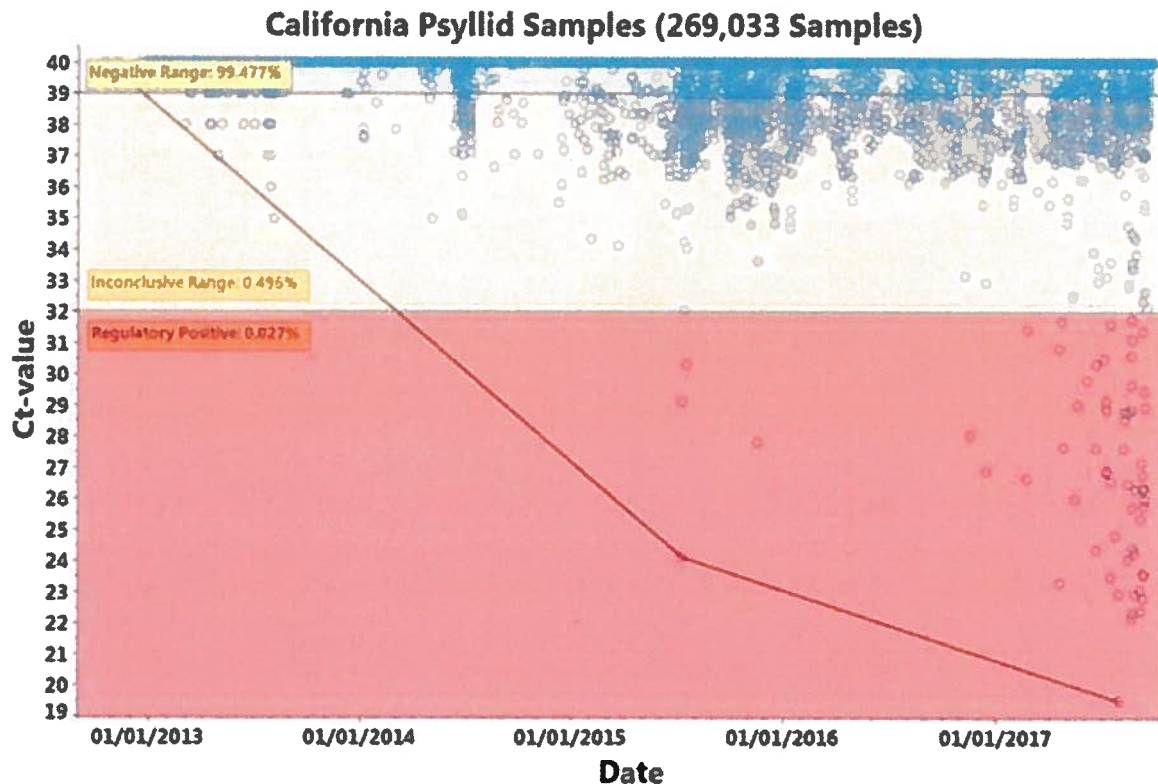


Figure 9: qPCR regulatory results recorded since the detection of HLB in California over time compared to the concentration of the pathogen in the sample (Ct < 32.1= HLB positive (red zone), Ct 32.1-38.9 = suspect (yellow zone), Ct > 38.9=HLB not detected (green zone)). The lower the Ct value, the higher the concentration of the HLB bacterium. Note the trend towards lower Ct values over time and the increase in numbers of HLB positive psyllids starting in 2015 and continuing through 2017 indicating that the titre (concentration) of HLB DNA in the psyllids is increasing.

Implications of changes in the dynamics and recommendations

To summarize the recent changes in the dynamics of HLB/ACP detections in trees and psyllids:

1. The number of HLB positive citrus trees detected has increased exponentially in the last 4 months as compared to the previous 6 years.
2. The number of HLB positive and infectious Asian citrus psyllids has increased exponentially in the last four months as compared to the previous 6 years.
3. These HLB infectious psyllids are spreading to new communities in the LA basin at a significantly escalated rate compared to the previous 6 years.
4. These infectious psyllids can be spread by movement of ACP-host nursery stock, bulk citrus, and other possible carriers of ACP.

Given the above developments in the California HLB epidemic it is of the utmost urgency to further compartmentalize the state using quarantine zones defined by HLB risk to commercial citrus (rather than 5 mile and county wide quarantines). This will help to reduce the potential for spread of HLB to zones where HLB has not been detected in citrus trees, nor has Asian citrus psyllid become established in some cases. The proposal to divide the state into 7 zones for bulk citrus movement and three zones for nursery stock, will serve to restrict the dispersal of HLB and its ACP vectors. Currently all known HLB infected trees are inside a single quarantine zone – zone 6. However, with the exponential escalation of the number of infected ACP and citrus trees requires an immediate regulatory response to restrict spread before the opportunity for such measures to be effective is lost.

Zimbra

Fwd: OC Streetcar Construction Alert

From :Scott Stiles <sstiles@ggcity.org>
Subject: OC Streetcar Construction Alert
To : Meena Yoo <meenay@ggcity.org>

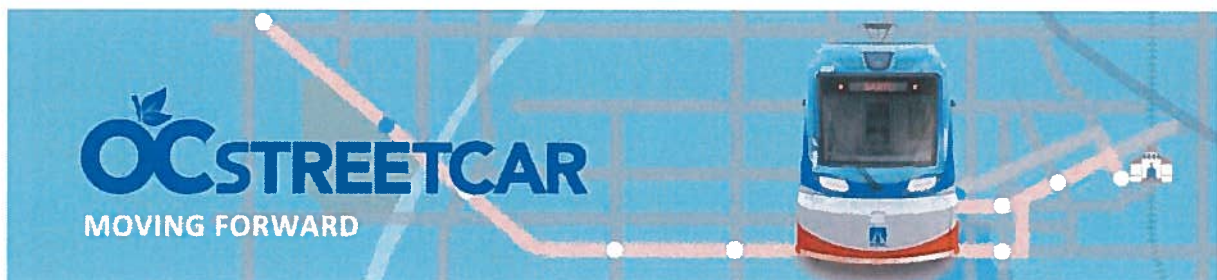
Mon, Apr 26, 2021 12:00 PM

Meena: for Mgr's memo. Scott

Scott C. Stiles, ICMA-CM

City Manager / City of Garden Grove
11222 Acacia Parkway
Garden Grove, CA 92840
714-741-5100 (o) / 714-719-1810 (c)
www.ggcity.org

From: "OC Streetcar" <ocstreetcar@octa.net>
To: "sstiles" <sstiles@ggcity.org>
Sent: Monday, April 26, 2021 10:01:54 AM
Subject: OC Streetcar Construction Alert

[Anuncio en Español](#)

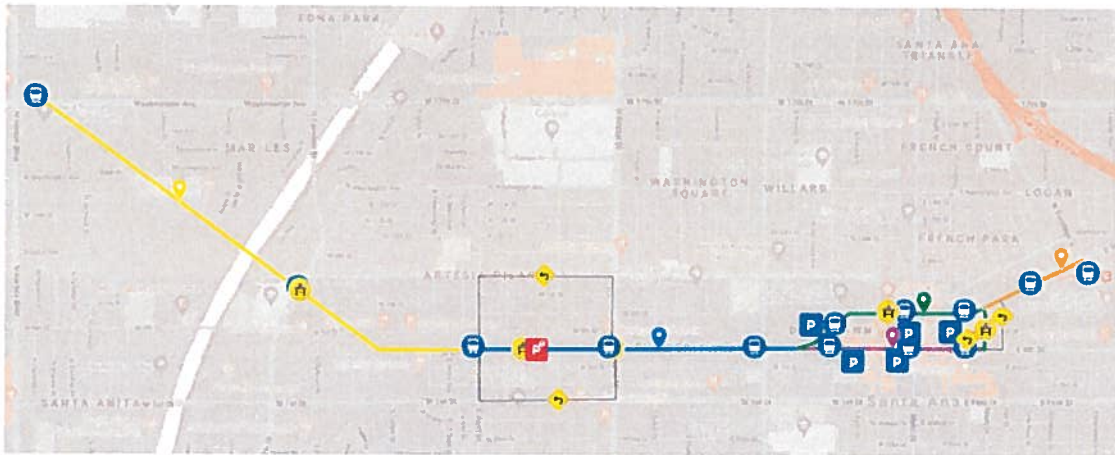
Construction Alert Week of April 26, 2021

Construction Highlights:

- Fairview Crossing construction at Fairview Street and the Pacific Electric Right-of-Way. Work requires single lane closures. Follow detour signs.
- Track installation in Segment 2. Work requires full lane closures on Santa Ana Boulevard from Raitt Street to Bristol Street. Please follow detour signs. [Click here](#) for more details.
- Track installation in Segment 3. Work requires full lane closures on Santa Ana Boulevard from Parton Street to Mortimer Street. A single lane is open for traffic.
- Track installation on Mortimer Street. Work requires full lane and parking closures on Mortimer Street from 4th Street to 6th Street. Please follow detour signs.
- Track installation in Segment 4 will begin on 4th Street between Mortimer Street and Spurgeon Street in early May.

Access will be maintained for all residents and businesses. Construction activities are dependent on weather and resource availability.

For specific work activities in your area, click on the map below.



OC Streetcar Track Installation Has Started!

Click to watch the video premiere
of this exciting milestone



Join the OCTA Board of Directors, the City of Santa Ana and the project's community partners in celebrating this major OC Streetcar project milestone.

EAT SHOP PLAY
 DOWNTOWN SANTA ANA

OCTA's Eat Shop Play program supports businesses located along the future OC streetcar route. Benefits to customers include special deals, invitations to community events and free parking for the first 2 hours in nearby structures. Learn more at octa.net/eatshopplay.

About the Project

OC Streetcar is the first modern streetcar project to be built in Orange County and will serve Santa Ana's historic and thriving downtown, which includes federal, state and local courthouses, government offices, colleges, an artists' village and a thriving restaurant scene. It will operate along a 4.15-mile route that connects the Santa Ana Regional Transportation Center (SARTC) and a new transit hub at Harbor Boulevard and Westminister Avenue in Garden Grove.

To share this e-blast, forward this [link](#)

 OCstreetcar.com	 OCstreetcar@octa.net	 1(844) 760-OCSC or 1(844) 746-6272
 facebook.com/OCstreetcar	 @OCstreetcar	 @OCstreetcar



OC Streetcar | 550 S. Main Street , Orange, CA 92868

[Unsubscribe sstiles@ggcity.org](mailto:sstiles@ggcity.org)

[Update Profile](#) | [Customer Contact Data Notice](#)

Sent by ocstreetcar@octa.net powered by



Try email marketing for free today!

WEEKLY MEMO 4-29-2021

**S O C I A L M E D I A
H I G H L I G H T S**



Post Performance

April 22, 2021 - April 28, 2021

Review the lifetime performance of the posts you published during the publishing period.

Included in this Report

 @CityGardenGrove

 Garden Grove City Hall

 gardengrovecityhall

 **gardengrovecityhall**
Wed 4/28/2021 1:00 pm PDT

▲ We'd like to thank everyone who participated in #DenimDay in support of survivors of sexual violence....



Impressions	1,408
Reach	1,303
Engagements	77
Engagement Rate (per Impressi...	5.5%

 **Garden Grove City Hall**
Wed 4/28/2021 1:00 pm PDT

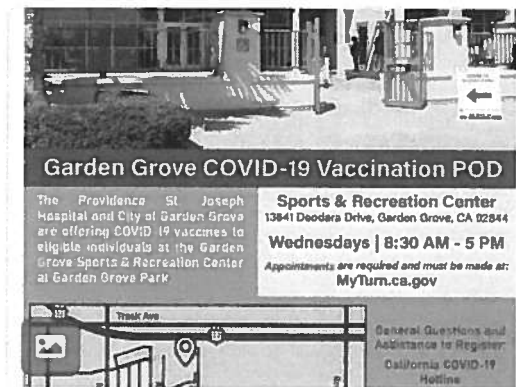
▲ We'd like to thank everyone who participated in #DenimDay in support of survivors of sexual violence....



Impressions	1,422
Reach	1,372
Engagements	121
Engagement Rate (per Impressi...	8.5%

 **Garden Grove City Hall**
Wed 4/28/2021 10:30 am PDT

Are you waiting to be vaccinated?
Appointments are available NOW for the Johnson & Johnson vaccine, at the Garde...



Impressions	408
Reach	404
Engagements	11
Engagement Rate (per Impression)	2.7%

 **Garden Grove City Hall**
Wed 4/28/2021 7:51 am PDT

The U.S. Small Business Administration has announced the opening of the Restaurant Revitalization Fund program, which aims...



Impressions	758
Reach	728
Engagements	41
Engagement Rate (per Impression)	5.4%

 **Garden Grove City Hall**
Tue 4/27/2021 5:17 pm PDT

COVID VACCINE CLINIC
CHRIST CATHEDRAL
13820 Chaparral Avenue, Garden Grove, CA 92640

CHOICE	DOSE 1	DOSE 2	MUST REGISTER BY:
1	Wednesday, 4/28/21	Wednesday, 5/19/21	Monday, 4/26/21
2	Wednesday, 5/05/21	Wednesday, 6/02/21	Monday, 5/03/21
3	Wednesday, 5/12/21	Wednesday, 6/09/21	Monday, 5/10/21

REQUIREMENTS:

- APPOINTMENTS ONLY, no walk-in's allowed
- ALL MUST BRING PHOTO ID
- AGES 16-17: *Must have a parent/legal guardian present* to receive the vaccine and present required documents at the appointment:
 - Photo ID
 1. Government ID/passport DOB (from America or foreign country)
 2. School Photo ID
 - Official form verifying DOB
 1. Birth Certificate
 2. Immigration paperwork
 3. Medical visit summary with Name and DOB
 4. Medical Insurance Card with Name and DOB
 5. Prescription with Name and DOB

Impressions	503
Reach	503
Engagements	9
Engagement Rate (per Impression)	1.8%

  **@CityGardenGrove**
Tue 4/27/2021 11:31 am PDT

On Saturday 5/1, 8AM-5PM, Garden Grove residents, age 18+, are invited to receive the COVID19 vaccine at a pop-up vaccin...


SANTA ANA VACCINATION CLINIC

CALIFORNIA ALL
Vaccinate ALL 58

Where?
Second Baptist Church
4300 Westminster Ave, Santa Ana, CA 92703

When?
1st Dose: Saturday, May 1st from 8:00am to 5:00pm
2nd Dose: Saturday, June 5th (same time)

Register at the link provided



Impressions	455
Potential Reach	4,335
Engagements	36
Engagement Rate (per Impression)	7.9%

G **f** Garden Grove City Hall
Tue 4/27/2021 11:29 am PDT

On Saturday, May 1, from 8:00 a.m. to 5:00 p.m., Garden Grove residents, age 18 and over, are invited to receive the COVI...

SANTA ANA VACCINATION CLINIC
CALIFORNIA ALL
Vaccinate ALL 58

Where?
Second Baptist Church
4300 Westminster Ave, Santa Ana, CA 92703

When?
1st Dose: Saturday, May 1st from 8:00am to 5:00pm
2nd Dose: Saturday, June 5th (same time)

Register at the link provided

Impressions	1,001
Reach	1,001
Engagements	51
Engagement Rate (per Impressi...	5.1%

G **@** gardengrovecityhall
Tue 4/27/2021 10:04 am PDT

DENIM DAY
APRIL 28
Wear Jeans to Show Support for Survivors of Sexual Violence.

@gardengrovecityhall

Impressions	584
Reach	576
Comments	2
Story Taps Back	2

G **@** gardengrovecityhall
Tue 4/27/2021 10:04 am PDT

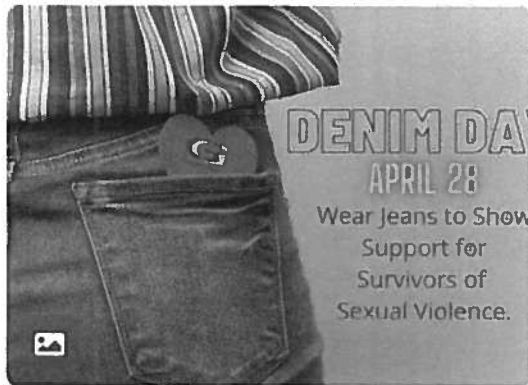
#DENIMDAY Make a social statement through your fashion statement and help raise awareness of rape and sexual...

DENIM DAY
APRIL 28
Wear Jeans to Show Support for Survivors of Sexual Violence.

Impressions	1,098
Reach	1,058
Engagements	34
Engagement Rate (per Impressi...	3.1%

G **f** Garden Grove City Hall
Tue 4/27/2021 10:01 am PDT

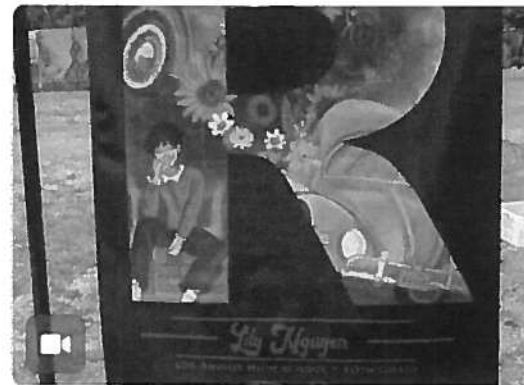
#DENIMDAY Make a social statement through your fashion statement and help raise awareness of rape and sexual...



Impressions	862
Reach	823
Engagements	27
Engagement Rate (per Impression)	3.1%

G **@** gardengrovecityhall
Mon 4/26/2021 12:57 pm PDT

RE:IMAGINE Letter Installation at Village ...
The RE:IMAGINE temporary art installation is back at Village Green park, located at...



Video Views	473
Impressions	1,045
Reach	988
Engagements	46
Engagement Rate (per Impression)	4.4%

G **f** Garden Grove City Hall
Mon 4/26/2021 11:39 am PDT

The RE:IMAGINE temporary art installation is back at Village Green park, located at 12732 Main Street! Through May, stop b...



Video Views	765
Impressions	1,228
Reach	1,228
Engagements	218
Engagement Rate (per Impression)	17.8%

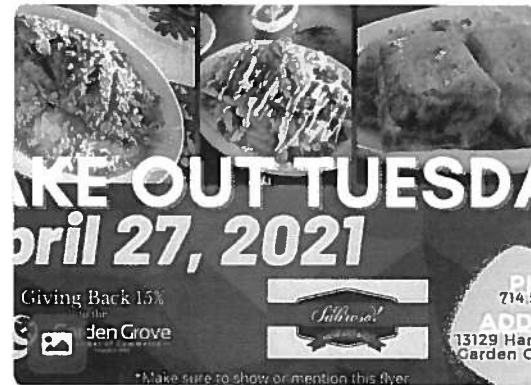
G **f** Garden Grove City Hall
 Mon 4/26/2021 11:34 am PDT

The RE:IMAGINE temporary art installation is back at Village Green park, located at 12732 Main Street! Through May, stop by the park to check out the vinyl artwork created by students from the Garden Grove Unified School District's Visual and Performing Arts department! Keep an eye out **A** more temporary art

Impressions	-
Reach	-
Engagements	-
Engagement Rate (per Impression)	-

G **t** @CityGardenGrove
 Mon 4/26/2021 10:22 am PDT

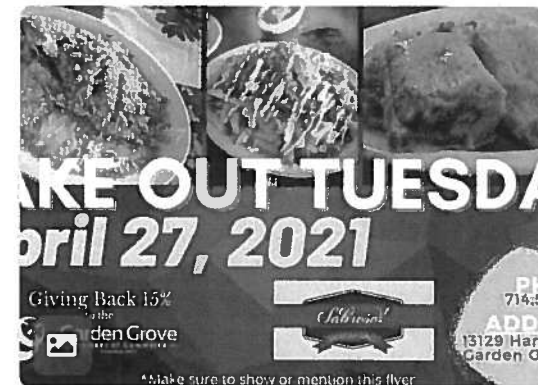
The @GGChamber Restaurant Community Give-Back is celebrating "TakeOutTuesday" with Sabroso! Mexica...



Impressions	386
Potential Reach	4,334
Engagements	12
Engagement Rate (per Impression)	3.1%

G **f** Garden Grove City Hall
 Mon 4/26/2021 10:06 am PDT

Want to enjoy a #TacoTuesday with more variation? Join the Garden Grove Chamber of Commerce for their "TakeoutTuesday"...



Impressions	731
Reach	721
Engagements	13
Engagement Rate (per Impression)	1.8%

  **@CityGardenGrove**
Thu 4/22/2021 5:22 pm PDT

Attention Restaurant Owners 🍷
@SBA_OCIE encourages restaurant owners/industry leaders to attend a...



Impressions	459
Potential Reach	4,332
Engagements	6
Engagement Rate (per Impressi...	1.3%

  **Garden Grove City Hall**
Thu 4/22/2021 5:00 pm PDT

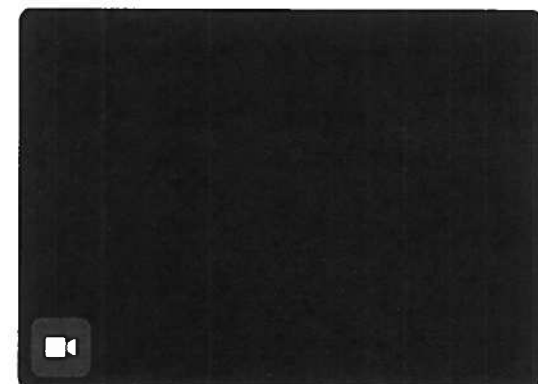
Attention Restaurant Owners! Receive funding to help you recover from COVID-19 hardships. 🍷 The Orange County Inland...



Impressions	1,058
Reach	1,026
Engagements	13
Engagement Rate (per Impressi...	1.2%

  **@CityGardenGrove**
Thu 4/22/2021 1:00 pm PDT

On a sunny Saturday afternoon, @GardenGrovePD Officers joined community members & elected officials...





Video Views	69
Impressions	479
Potential Reach	4,331
Engagements	9
Engagement Rate (per Impressi...	1.9%

  **gardengrovecityhall**
Thu 4/22/2021 1:00 pm PDT

Mural Clean Up in Garden Grove's Palma...
On a sunny Saturday afternoon, Garden Grove Police Officers joined community...




Video Views	292
Impressions	929
Reach	864
Engagements	27
Engagement Rate (per Impression)	2.9%

  **Garden Grove City Hall**
Thu 4/22/2021 1:00 pm PDT

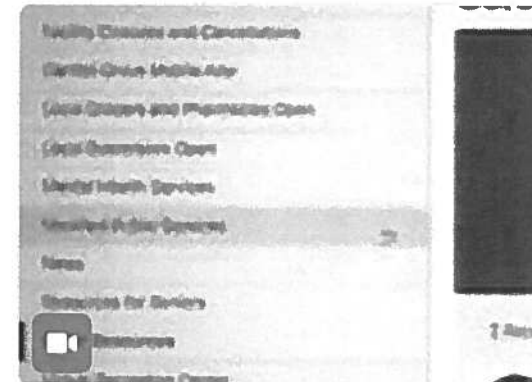
On a sunny Saturday afternoon, Garden Grove Police Officers joined community members and elected officials scrubbing...



Video Views	247
Impressions	677
Reach	640
Engagements	32
Engagement Rate (per Impression)	4.7%

  **gardengrovecityhall**
Thu 4/22/2021 10:01 am PDT

Headlines with Mayor Steve Jones - April...
In this Headlines, Garden Grove Mayor Steve Jones shares news of progress...



Video Views	184
Impressions	736
Reach	695
Engagements	13
Engagement Rate (per Impression)	1.8%

  **@CityGardenGrove**
Thu 4/22/2021 10:00 am PDT

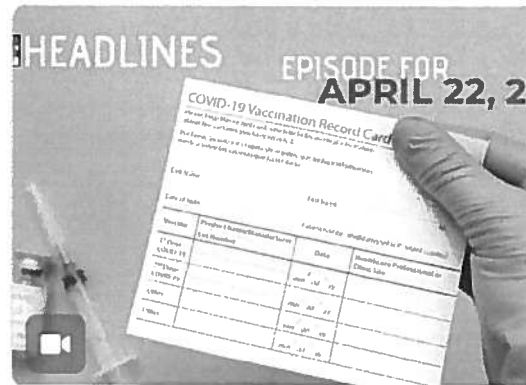
In this Headlines, Mayor Jones shares news of progress getting the COVID-19 vaccine to local seniors & @OCGovCA opening of vaccine availability to those age 16+. There's also help for mobility challenged seniors & those who aren't computer savvy [youtube.com/watch?v=vi_P9K...](https://www.youtube.com/watch?v=vi_P9K...) #GG1956



Post Link Clicks	0
Impressions	473
Potential Reach	4,330
Engagements	7
Engagement Rate (per Impressi...	1.5%

  **Garden Grove City Hall**
Thu 4/22/2021 10:00 am PDT

In this Headlines, Garden Grove Mayor Steve Jones shares news of progress getting the COVID-19 vaccine to local...



Video Views	913
Impressions	2,518
Reach	2,202
Engagements	114
Engagement Rate (per Impressi...	4.5%




Post Performance

April 22, 2021 - April 28, 2021

Review the lifetime performance of the posts you published during the publishing period.

Included in this Report

 Garden Grove Police Department

 gardengrovepd

 ggpd9unit



ggpdk9unit
Wed 4/28/2021 9:26 am PDT

Reposted from @cspk9 . Our hearts go out to our brothers and sisters at the Bakersfield Police Department and...



Impressions	973
Reach	936
Engagements	196
Engagement Rate (per Impressi...	20.1%



gardengrovepd
Tue 4/27/2021 12:06 pm PDT

Event Reminder: Please join us today, Tuesday, April 27, 2021 from 4:00 PM - 6:00 PM for the monthly Safety Event, in...



Impressions	5,975
Reach	5,785
Engagements	404
Engagement Rate (per Impressi...	6.8%



Garden Grove Police Depa...
Tue 4/27/2021 12:06 pm PDT

Event Reminder: Please join us today, Tuesday, April 27, 2021 from 4:00 PM - 6:00 PM for the monthly Safety Event, in...



Impressions	2,921
Reach	2,843
Engagements	152
Engagement Rate (per Impressi...	5.2%



gppdk9unit
Fri 4/23/2021 5:41 pm PDT

Foot pursuits are dynamic and usually happen abruptly. Often times there might be one or two officers already ahead of t...



Video Views	2,273
Impressions	3,991
Reach	3,948
Engagements	500
Engagement Rate (per Impressi...	12.5%



gardengrovepd
Thu 4/22/2021 3:05 pm PDT

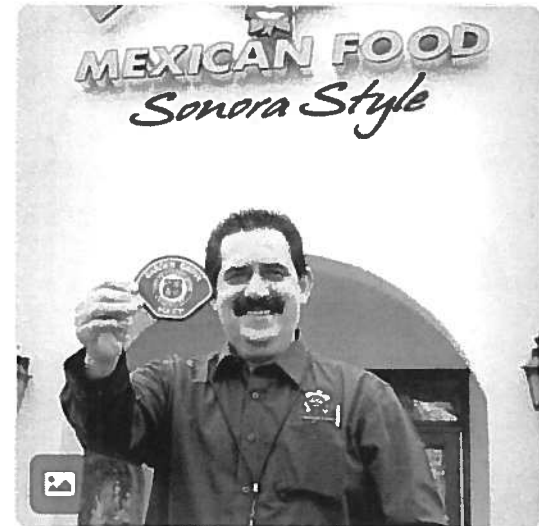
Please join us next Tuesday, April 27, 2021 from 4:00 PM - 6:00 PM for the monthly Safety Event, in partnership with...



Impressions	10,820
Reach	9,340
Engagements	911
Engagement Rate (per Impres...	8.4%



Garden Grove Police Depa...
Thu 4/22/2021 3:05 pm PDT



Impressions	8,188
Reach	7,652
Engagements	780
Engagement Rate (per Impressi...	9.5%



f Garden Grove Police Depa...

Thu 4/22/2021 3:05 pm PDT

Please join us next Tuesday, April 27, 2021 from 4:00 PM - 6:00 PM for the monthly Safety Event, in partnership with Los...



Impressions	8,478
Reach	7,776
Engagements	793
Engagement Rate (per Impressi...	9.4%



Post Performance

April 22, 2021 - April 28, 2021

Review the lifetime performance of the posts you published during the publishing period.

Included in this Report

 @GardenGroveTV3

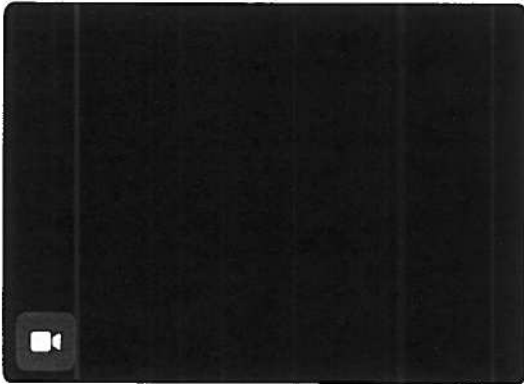
 Garden Grove TV 3



@GardenGroveTV3

Thu 4/22/2021 1:00 pm PDT

On a sunny Saturday afternoon, @GardenGrovePD Officers joined community members & elected officials...



Video Views	4
Impressions	41
Potential Reach	418
Engagements	0
Engagement Rate (per Impression)	0%



Garden Grove TV 3

Thu 4/22/2021 1:00 pm PDT

On a sunny Saturday afternoon, Garden Grove Police Officers joined community members and elected officials scrubbing...



Video Views	20
Impressions	43
Reach	40
Engagements	4
Engagement Rate (per Impression)	9.3%



@GardenGroveTV3

Thu 4/22/2021 10:00 am PDT

In this Headlines, Mayor Jones shares news of progress getting the COVID-19 vaccine to local seniors & @OCGovCA opening of vaccine availability to those age 16+. There's also help for mobility challenged seniors & those who aren't computer savvy. 🗣️

[youtube.com/watch?](https://youtube.com/watch?_vi_P9K...)

[_vi_P9K...](#) #GGTV3

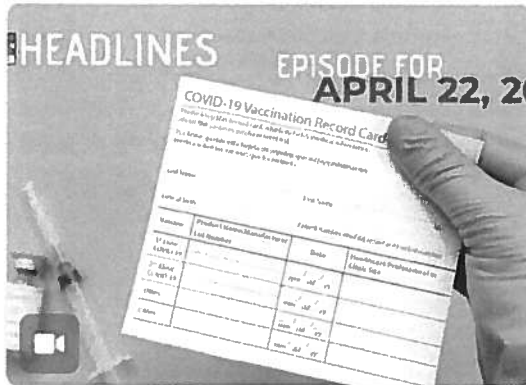
Post Link Clicks	2
Impressions	29
Potential Reach	418
Engagements	5
Engagement Rate (per Impression)	17.2%



f Garden Grove TV 3

Thu 4/22/2021 10:00 am PDT

In this Headlines, Garden Grove Mayor Steve Jones shares news of progress getting the COVID-19 vaccine to local...



Video Views	15
Impressions	43
Reach	38
Engagements	2
Engagement Rate (per Impression)	4.7%

WEEKLY MEMO 4-29-2021

NEWS ARTICLES

Getting a COVID-19 vaccine is fine during Ramadan; shots coming to some O.C. mosques

Muslim community leaders are spreading the message that the vaccine doesn't violate the month-long daytime fast.

By ROXANA KOPETMAN | rkopetman@scng.com | Orange County Register
PUBLISHED: April 26, 2021 at 7:00 a.m. | UPDATED: April 26, 2021 at 9:55 a.m.

As Muslims across Orange County celebrate the holy month of Ramadan, some may be hesitant to get a COVID-19 vaccine for fear of breaking their daytime fast. Rida Hamida has a message for them: Getting a shot against the deadly virus, during the day, isn't a violation.

"It doesn't break your fast. And it's safe to get vaccinated," Hamida said.

On May 1, Hamida said she arranged to bring a mobile vaccination unit to the Islamic Center of Santa Ana, in coordination with the Orange County Health Care Agency, Care Ambulance Service and her own Latino & Muslim Unity organization. She's also bringing a taco truck, part of her #TacoTrucksatEveryMosque initiative, which began in 2017 as a way to unite Muslims and Latinos with tacos that meet halal specifications. "They'll get a side of tacos with a vaccination," Hamida said.

The local Muslim activist said she began talking with the Orange County health department several weeks before the start of Ramadan, which began on April 12, to explain that many Muslims will avoid getting the vaccine because they think it's forbidden. She also pushed to get mobile clinics at local mosques.

Vaccines, because they're not consumed like food or drinks, do not invalidate Ramadan's fast, according to a majority of Islamic scholars, said Omar Ricci, spokesman for the Islamic Center of Southern California.

"The real challenge for Islamic organizations is to get the word out," Ricci said.

Imam Mustafa Umar, of the Islamic Institute of Orange County in Anaheim, said it's a great idea to bring the vaccines directly to the mosques.

"It's going to make it easier for everyone," Umar said. "They're already going to the mosque... And the mosque has all the guidelines in place, with distancing and masks."

Hamida organized a second taco truck and vaccination event for May 8 at the West Coast Islamic Society, a mosque in Anaheim.

"I advocated for mobile clinics at the mosque to meet people where they're at," Hamida said.

"I wanted to make sure they have mobile clinics at the mosques to give access to folks who are breaking their fasts after Iftar," Hamida said, referring to the dinner that breaks fasts each day during Ramadan. "Because many would not feel comfortable being vaccinated during the day."

Another mobile vaccination clinic is planned for April 30 at the Islamic Society of Orange County in Garden Grove, the county's largest mosque. That clinic is organized by the health department, the mosque and CAIR, the Council on American-Islamic Relations.

The three vaccination events are in the evening and require registration, which can be found online at the Latino Muslim Unity and the CAIR, Los Angeles Facebook pages. "We're trying to meet people at their locations, with their community groups," said Orange County spokeswoman Molly Nichelson. "These are folks who are trusted messengers. All these community activists have been fantastic in helping us out."

Motorcyclist killed in weekend crash on Ortega Highway identified as a Garden Grove man

By CITY NEWS SERVICE | news@socalnews.com |

PUBLISHED: April 26, 2021 at 10:41 p.m. | UPDATED: April 27, 2021 at 12:00 a.m.

LAKE ELSINORE — A 50-year-old motorcyclist who was killed in a collision on the Ortega (74) Highway just west of Lake Elsinore slammed into a sedan while trying to pass another car ahead of him, authorities said Monday.

Coroner officials said Jeremy Bell of Garden Grove died at the scene of the head-on crash, which occurred about 5:20 p.m. Saturday near the Lookout turnout on the 74.

Bell was riding his 2018 Kawasaki KX motorcycle on the two-lane corridor when he encountered a slower moving vehicle, according to California Highway Patrol Officer Mike Lassig. He said the motorcyclist was going roughly 60 mph and attempted to go around the car, crossing over double yellow lines into the opposing traffic lane.

The motorcycle collided head-on in the westbound traffic lane with a 2015 Hyundai Elantra, according to Lassig, who said Bell was thrown from his motorcycle onto the pavement, suffering catastrophic injuries.

Cal Fire/Riverside County Fire Department paramedics pronounced him dead at the scene.

The other motorist was not injured.

The highway was fully closed for three hours while a preliminary investigation was conducted and the wreckage was removed.

“The CHP would like to remind all motorists to never cross over solid double yellow lines,” a CHP statement said.



CITY OF GARDEN GROVE NEWS

Contact: John Montanez (714) 741-5200
Community Services Director

FOR IMMEDIATE RELEASE

Public Information Office (714) 741-5280

Thursday, April 29, 2021

Follow the City of Garden Grove on Social Media



CITY DEDICATES BIKE AND PEDESTRIAN TRAIL UNVEILS COMMEMORATIVE PLAQUE

On Tuesday, April 27, the City of Garden Grove dedicated the Garden Grove Medal of Honor Bike and Pedestrian Trail, and unveiled a commemorative plaque to celebrate the completion of the 1-mile multi-use path. The trail, built along the Orange County Transportation Authority (OCTA) Pacific Electric Right-of-Way, runs from Nelson Street to Brookhurst Street. It was first introduced as a pilot project at the inaugural Re:Imagine Garden Grove Open Streets event in 2014.

During the dedication, Garden Grove Mayor Steve Jones spoke about the concept for the trail originating from the "High Line," an elevated park and trail in New York City, and how the Medal of Honor Bike and Pedestrian Trail ties into the City's Re:Imagine Garden Grove vision.

"Despite the challenges over the last year, our efforts to continue re-imagining new alternatives to accessibility, transportation, and other healthy lifestyle activities, keep moving forward."

The Mayor also revealed a future creation of a mural that will be added to the Nelson Street leg of the trail, which will pay homage to the red cars once used on the railway, and other iconic images of our local history.

-more-

City Dedicates Bike and Pedestrian Trail Unveils Commemorative Plaque
2-2-2

Located in the City's District 4, belonging to Garden Grove City Council Member Patrick Phat Bui, the multi-use path was officially named in June 2020 by the Garden Grove City Council as the Medal of Honor Bike and Pedestrian Trail in honor of Garden Grove's Medal of Honor recipients: Commander Donald A. Gary, Corporal Tibor Rubin, and Master-At-Arms Michael A. Monsoor.

"The Medal of Honor Bike and Pedestrian Trail memorializes our current as well as future Congressional Medal of Honor recipients. This is an important step in honoring those who have given the ultimate sacrifice and continuing to remember them," said Council Member Bui.

The project was part of the Caltrans Active Transportation Program (ATP) Cycle 2 Grant. The City was awarded approximately \$1.8 million in 2015 to complete four infrastructure phases of the project which includes the engineering design, environmental study, Right-of-Way (ROW) certification, and construction.

The City was also awarded approximately \$74,000 in 2017 for the fifth phase of the project as part of the Caltrans Active Transportation Program (ATP) Cycle 2 Grant. The fifth phase is the ongoing education and outreach component known as BikeSafe Garden Grove.

For more information on the Garden Grove Medal of Honor Bike and Pedestrian Trail and BikeSafe Garden Grove, visit ggcity.org/bikeped.

###



CITY OF GARDEN GROVE NEWS

Contact: John Montanez (714) 741-5200
Community Services Director

Monday, April 26, 2021

FOR IMMEDIATE RELEASE

Public Information Office (714) 741-5280

Follow the City of Garden Grove on Social Media



MEDIA ALERT

CITY TO DEDICATE BIKE AND PEDESTRIAN TRAIL UNVEIL COMMEMORATIVE PLAQUE TOMORROW

Members of the media are invited to attend the dedication of the Garden Grove Medal of Honor Bike and Pedestrian Trail, and the unveiling of a commemorative plaque. The 1-mile bike and pedestrian trail that runs from Nelson Street to Brookhurst Street was first introduced as a pilot project at the inaugural "Re:Imagine Garden Grove Open Streets" event in 2014. The project was part of the Caltrans Active Transportation Program (ATP) Cycle 2 Grant. Scheduled to speak is Garden Grove Mayor Steve Jones.

WHAT: Garden Grove Medal of Honor Bike and Pedestrian Trail dedication and plaque unveiling

WHEN: Tuesday, April 27, 2021
4:30 p.m. – 5:00 p.m.

WHERE: Medal of Honor Bike and Pedestrian Trail on Nutwood Street
(Behind the Garden Grove Post Office at 10441 Stanford Avenue)

WHO: Mayor Steve Jones and members of the Garden Grove City Council

INFO: Invitation attached
Informational materials available at the event

###



English to Vietnamese
Press Releases

THÔNG TIN

Từ Thành Phố Garden Grove

Để phổ biến trên các phương tiện truyền thông
Văn phòng thông tin liên lạc: (714) 741-5280



Liên lạc: John Montanez, (714) 741-5200
Ban phục vụ cộng đồng

Thứ Tư, 21 tháng Tư, 2021

TRUNG TÂM GARDEN GROVE SPORTS & RECREATION CENTER SẼ LÀ ĐỊA ĐIỂM CHÍCH NGỪA COVID-19, LẤY HẸN QUA MYTURN

Thành phố Garden Grove phối hợp cùng bệnh viện Providence St. Joseph đã mở một điểm chích ngừa COVID-19 (POD) tại Trung tâm thể thao Sports & Recreation Center, Garden Grove, nằm trong Garden Grove Park, địa chỉ 13641 Deodara Drive. Những cá nhân đủ điều kiện chưa đăng ký chích ngừa COVID-19 được khuyến khích đăng ký trên trang mạng MyTurn.ca.gov để có cuộc hẹn chích ngừa tại đây. Việc chích ngừa sẽ chỉ được thực hiện theo lịch hẹn, vào Thứ Tư hàng tuần, từ 8:30 sáng đến 5:00 giờ chiều.

Các cá nhân đủ điều kiện cần giúp đỡ để đăng ký cuộc hẹn có thể gọi đến đường dây nóng California COVID-19 theo số (833) 422-4255 hoặc trò chuyện tại chat.myturn.ca.gov, có tiếng Anh và tiếng Tây Ban Nha.

Những ai muốn tới chích ngừa tại Trung tâm Sports & Recreation Center Garden Grove cần tuân theo các hướng dẫn sức khỏe COVID-19 bằng cách đeo khẩu trang, duy trì khoảng cách xã hội ít nhất 6 feet với những người khác bên ngoài hộ gia đình của họ. Vui lòng không đến cuộc hẹn nếu quý vị đang có các triệu chứng giống như bệnh cúm; có kết quả xét nghiệm dương tính với COVID-19; hoặc ai đó trong gia đình của quý vị đã có kết quả xét nghiệm dương tính với COVID-19.

Để biết thêm thông tin và hẹn chích ngừa, hãy truy cập trang MyTurn.ca.gov.
hoặc tại trang mạng ggcity.org/coronavirus.

#

Garden Grove mở trung tâm chích ngừa COVID-19

Apr 22, 2021

cập nhật lần cuối: Apr 22, 2021

GARDEN GROVE, California (NV) – Thành phố Garden Grove công bố hợp tác với bệnh viện St. Joseph để mở một trung tâm chích ngừa COVID-19 gần trung học Bolsa Grande.

Theo thông cáo của Garden Grove, thành phố sẽ chuyển trung tâm thể thao Sport & Recreation Center trong công viên Garden Grove thành địa điểm chích ngừa.



Trung tâm chích ngừa của Garden Grove. (Hình: Garden Grove cung cấp)

Thành phố kêu gọi những cá nhân đủ điều kiện nhưng chưa ghi danh chích ngừa COVID-19 lên trang web myturn.ca.gov để lấy hẹn chích ngừa tại đây.

Trung tâm chích ngừa của Garden Grove chỉ chích cho những người đã lấy hẹn vào Thứ Tư hằng tuần, từ 8 giờ 30 phút sáng đến 5 giờ chiều.

Những người cần giúp đỡ để ghi danh lấy hẹn có thể gọi đến đường dây nóng về COVID-19 của California qua số (833) 422-4255 hoặc trò chuyện tại chat.myturn.ca.gov, có tiếng Anh và tiếng Tây Ban Nha.

Những ai muốn tới chích ngừa tại trung tâm Sports & Recreation Center Garden Grove cần tuân theo các hướng dẫn sức khỏe COVID-19 bằng cách đeo khẩu trang, duy trì khoảng cách xã hội ít nhất 6 foot với những

người khác bên ngoài gia đình của họ.

Tuy nhiên, thành phố còn dặn dò những cư dân dù đã lấy hẹn, nhưng không được đến chích ngừa, nếu đang có các triệu chứng giống như bệnh cúm; có kết quả xét nghiệm dương tính với COVID-19; hoặc ai đó trong gia đình đã có kết quả xét nghiệm dương tính với COVID-19.

Trung tâm thể thao Sport & Recreation Center của Garden Grove tọa lạc tại địa chỉ 13641 Deodara Dr, Garden Grove, CA 92844.

Để biết thêm thông tin và ghi danh chích ngừa, xin vào trang web myturn.ca.gov hoặc ggcity.org/coronavirus. (TL) [qd]

[Facebook](#)

[Twitter](#)

[Email](#)

[Print](#)



Mẹo đeo khẩu trang



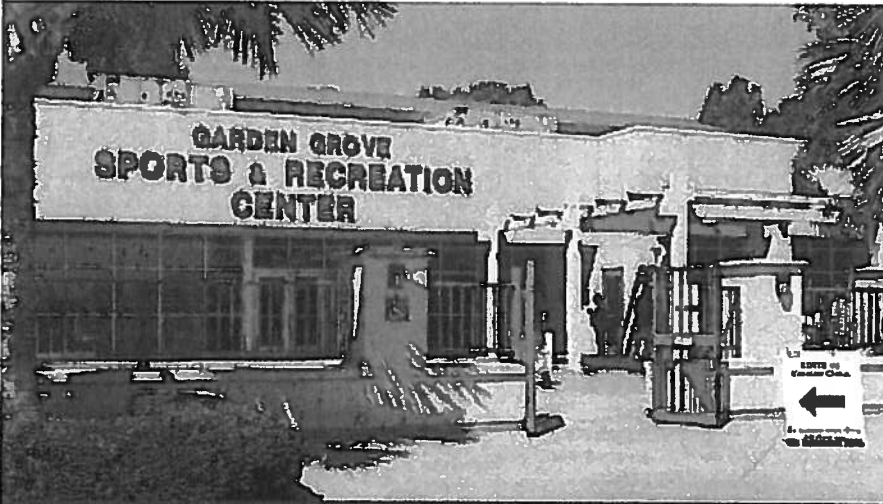
covid19.ca.gov

VIỆT BÁO › Tin Tức › Tin Ngày › Cộng Đồng

Trước Sau

Trung Tâm Garden Grove Sports & Recreation Center Sẽ Là Địa Điểm Chích Ngừa COVID-19, Lấy Hẹn Qua Myturn

21/04/2021



Garden Grove COVID-19 Vaccination POD

The Providence St. Joseph Hospital and City of Garden Grove are offering COVID-19 vaccines to eligible individuals at the Garden Grove Sports & Recreation Center at Garden Grove Park.

Sports & Recreation Center
13641 Decodara Drive, Garden Grove, CA 92844

Wednesdays | 8:30 AM - 5 PM

Appointments are required and must be made at:
MyTurn.ca.gov

227
228
General Questions and



Những cá nhân đủ điều kiện chưa đăng ký chích ngừa COVID-19 được khuyến khích đăng ký trên trang mạng [MyTurn.ca.gov](https://myturn.ca.gov) để có cuộc hẹn chích ngừa tại đây. Việc chích ngừa sẽ chỉ được thực hiện theo lịch hẹn, vào Thứ Tư hàng tuần, từ 8:30 sáng đến 5:00 giờ chiều.

Các cá nhân đủ điều kiện cần giúp đỡ để đăng ký cuộc hẹn có thể gọi đến đường dây nóng California COVID-19 theo số (833) 422-4255 hoặc trò chuyện tại chat.myturn.ca.gov, có tiếng Anh và tiếng Tây Ban Nha.

Những ai muốn tới chích ngừa tại Trung tâm Sports & Recreation Center Garden Grove cần tuân theo các hướng dẫn sức khỏe COVID-19 bằng cách đeo khẩu trang, duy trì khoảng cách xã hội ít nhất 6 feet với những người khác bên ngoài hộ gia đình của họ. Vui lòng không đến cuộc hẹn nếu quý vị đang có các triệu chứng giống như bệnh cúm; có kết quả xét nghiệm dương tính với COVID-19; hoặc ai đó trong gia đình của quý vị đã có kết quả xét nghiệm dương tính với COVID-19.

Để biết thêm thông tin và hẹn chích ngừa, hãy truy cập trang [MyTurn.ca.gov](https://myturn.ca.gov).

hoặc tại trang mạng ggcity.org/coronavirus.

- 1 Dân Anh Được Ở Lại Mỹ Vì Chồng Chết Ở Tháp Wtc
- Mạng Treo Mũi Sóng
- Chuyện Dài Làng Thâm Mỹ: Làn Mi Cong Trên Mắt Hồ Thu
- Vợ Chồng Đại Sứ Peterson Từ Giã Vn, Về Florida



Garden Grove khánh thành đường mòn ‘Huân Chương Danh Dự’

Apr 27, 2021

cập nhật lần cuối Apr 27, 2021

Thiện Lê/Người Việt

GARDEN GROVE, California (NV) – Chiều Thứ Ba, 27 Tháng Tư, thành phố Garden Grove tổ chức lễ khánh thành đường mòn có tên “Huân Chương Danh Dự” (Medal of Honor) để đi bộ, đạp xe, và là nơi cho trẻ em sinh hoạt an toàn sau giờ học.



Hội Đồng Thành Phố Garden Grove và các cựu quân nhân được vinh danh tại đường mòn mới khánh thành. (Hình: Thiện Lê/Người Việt)

Đường mòn này nằm ngay phía sau bưu điện Garden Grove, để ghi nhận sự hy sinh của ba cựu quân nhân đang cư ngụ ở Garden Grove, từng nhận được Huân Chương Danh Dự của Quốc Hội Hoa Kỳ. Ba người đó là ông Donald A. Gary, ông Tibor Rubin và ông Michael A. Monsoor.

Lễ khánh thành đường mòn có sự hiện diện đông đủ của Hội Đồng Thành Phố Garden Grove, cũng như các cựu quân nhân nói trên và gia đình họ, cùng một số đại diện của Sở Giao Thông California (Caltrans).

Thị Trưởng Steve Jones phát biểu về đường mòn: "Chúng tôi phải mất nhiều năm mới hoàn tất được đường mòn này vì có chó sói đồng cỏ (coyote), có người vô gia cư sinh sống và có nhiều hoạt động phi pháp xảy ra ở đây. Dự án này được giới thiệu hồi năm 2014, và phải mất nhiều năm mới được khánh thành."

“Chúng tôi rất mừng vì Cơ Quan Giao Thông Orange County (OCTA) đã cho giấy phép để xây đường mòn này vì đây là đất của họ. Tôi hy vọng một ngày nào đó con đường này sẽ kết nối được Orange County với Los Angeles vì cả hai nơi đều đang cải tiến hệ thống giao thông,” ông nói thêm.

Theo Thị Trưởng Jones, đường mòn này dài một dặm, chạy từ đường Nelson đến đường Brookhurst, và sẽ là một nơi cho trẻ em sinh hoạt an toàn sau giờ học.

“Tôi xin nói thật, đường mòn này hoàn tất vào năm 2020, và chúng tôi định tổ chức lễ khánh thành lúc đó, nhưng vì đại dịch COVID-19 nên phải hủy. Vì vậy, đường mòn này được mở ra mà chúng tôi gần như không nói gì hết. Sau đó, nhiều cư dân tự tìm thấy và lan truyền tin tức trên mạng xã hội,” Thị Trưởng Jones nói thêm.



Nhiều nhân viên của thành phố Garden Grove và đại diện của Caltrans đến dự lễ khánh thành. (Hình: Thiện Lê/Người Việt)

Đường mòn “Huân Chương Danh Dự” nằm gần ngã tư đường Stanford với đường Nutwood, và nơi này nằm trong Địa Hạt 4 của Nghị Viên Phát Bùi.

Nghị Viên Phát Bùi nói về ý nghĩa của tên đường mòn: “Hai vợ chồng tôi từng đến nghĩa trang cho những người từng nhận được Huân Chương Danh Dự, và nghĩ thành phố chưa ghi nhận đủ công lao của những anh hùng trong Đệ Nhị Thế Chiến. Tôi rất ngạc nhiên sau khi biết được có đến ba cựu quân nhân từng nhận được huân chương này đang cư ngụ ở Garden Grove, và muốn đặt bảng kỷ niệm chương trên đường mòn này để vinh danh sự hy sinh cao cả của họ. Tôi cũng xin chân thành cảm ơn những người đã đóng góp cho dự án này.”

Như Thị Trưởng Jones nói, đường mòn này được giới thiệu vào năm 2014, và thành phố nhận được chi phí \$1.8 triệu để bắt đầu xây dựng đoạn đường này. Số tiền là trợ cấp của Caltrans.

Đường mòn "Huân Chương Danh Dự" có đường cho xe đạp được tráng nhựa đường, rộng 12 foot, và có đường cho người đi bộ rộng 8 foot.

Thành phố Garden Grove còn hợp tác với sở cảnh sát để tổ chức chương trình BikeSafe Garden Grove. Chương trình này có mục đích hướng dẫn cư dân, các trường học địa phương, và tổ chức nhiều sinh hoạt cộng đồng để khuyến khích cư dân sử dụng đường mòn này, giúp họ sống khỏe mạnh hơn và có chỗ đạp xe an toàn.



Một cư dân trượt ván trên đường mòn "Huân Chương Danh Dự." (Hình: Thiện Lê/Người Việt)

Không chỉ vậy, đường mòn này còn là khởi điểm của kế hoạch trồng cây trong đô thị dài 40 năm của Garden Grove. Thành phố cho biết đã trồng được tổng cộng 363 cây dọc theo đường mòn dài một dặm này.

Cuối cùng, Thị Trưởng Steve Jones cho hay đoạn đường mòn này có một bức tường trống đang cần được biến thành một bức tranh tường, và thành phố sẽ mở một cuộc thi để tuyển họa sĩ vẽ lên bức tường đó. Ông nói chủ đề sẽ là "xe lửa" và sẽ công bố thông tin về cuộc thi đó sau. [qd]

--
Liên lạc tác giả: le.thien@nguoi-viet.com



THÔNG TIN

Từ Thành Phố Garden Grove

Để phổ biến trên các phương tiện truyền thông
Văn phòng thông tin liên lạc: (714) 741-5280

Liên lạc: John Montanez (714) 741-5200
Ban Phục Vụ Cộng Đồng



Thứ Hai, 26 tháng Tư, 2021

BUỔI LỄ KHÁNH THÀNH TUYẾN ĐƯỜNG DÀNH CHO NGƯỜI ĐI XE ĐẠP VÀ KHÁCH BỘ HÀNH

Kính mời các phóng viên báo chí, đài truyền thông, truyền hình địa phương tham dự lễ buổi lễ khánh thành tuyến đường dành cho người đi xe đạp và người đi bộ ở Garden Grove, và công bố một tấm bảng kỷ niệm chương (commemorative plaque.) Khoảng đường dành cho người đi bộ và xe đạp chạy dài 1 dặm (mile) chạy từ Nelson Street đến Brookhurst Street, lần đầu tiên được giới thiệu như một dự án thử nghiệm tại sự kiện "Re: Imagine Garden Grove Open Streets" khai mạc vào năm 2014. Dự án là một phần của Chương trình Caltrans Active Transportation Program (ATP) trợ cấp kỳ 2. Thị trưởng Garden Grove Steve Jones dự kiến sẽ phát biểu tại sự kiện này.

SỰ KIỆN: Buổi lễ khánh thành tuyến đường dành cho người đi xe đạp và người đi bộ ở Garden Grove

THỜI GIAN: Thứ Ba, 27 tháng Tư, 2021, lúc 4:30 - 5:00 giờ chiều

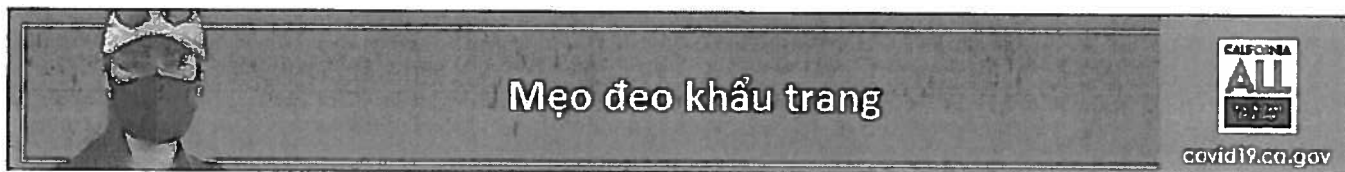
ĐỊA ĐIỂM: Phía sau bưu điện Garden Grove, tại địa chỉ 10441 Stanford Avenue

THAM DỰ: Thị trưởng và các nghị viên Thành phố

THÔNG TIN: Xem thiệp mời

Thông tin chi tiết sẽ có tại buổi lễ khánh thành

#



VIỆT BÁO › Tin Tức › Tin Ngày › Cộng Đồng

Trước Sau

Garden Grove Mời Cộng Đồng Tham Gia Bản Khảo Sát Cho Hạng Mục Công Lý Môi Trường

27/04/2021

Chúng tôi sử dụng cookie để cung cấp cho bạn trải nghiệm tốt nhất trên trang web của chúng tôi. Nếu tiếp tục, chúng tôi cho rằng bạn đã chấp thuận cookie cho mục đích này. [Đồng ý](#)

HOW CAN YOU PARTICIPATE IN THE ADOPTION OF THE NEW ENVIRONMENTAL JUSTICE ELEMENT?

The success of the Housing Element update and the adoption of a new Environmental Justice Element requires extensive community engagement and input. There will be multiple opportunities to participate throughout the planning process:



Join the email list at ggcity.org/housing-element



Join a virtual community meeting



Complete a community survey

For upcoming meeting and survey dates, please visit ggcity.org/housing-element



Please visit ggcity.org/housing-element for details or contact the Planning Division at (714) 741-5312 or planning@ggcity.org.

Thành phố Garden Grove hiện đang tiến hành thực hiện Hạng Mục Công Lý Môi Trường (Environmental Justice Element), là một phần của việc điều chỉnh bản Quy Hoạch Chung (General Plan) nhằm giảm thiểu những rủi ro về sức khỏe có thể gây ra bởi nhiều yếu tố, trong đó bao gồm thúc đẩy nguồn thực phẩm lành mạnh, những hoạt động thể dục thể thao và an toàn vệ sinh nhà ở. Cộng đồng được mời tham gia vào một cuộc khảo sát trực tuyến để cung cấp thông tin và hướng tới việc phát triển các mục tiêu và chính sách nhằm giảm thiểu sự ô nhiễm. Bản khảo sát có sẵn bằng nhiều ngôn ngữ, có thể được truy cập từ bây giờ cho đến Thứ Sáu, ngày 11 tháng Sáu, 2021 tại trang ggcity.org/housing-element.

Chúng tôi sử dụng cookie để cung cấp cho bạn trải nghiệm tốt nhất trên trang web của **Đồng ý** chúng tôi. Nếu tiếp tục, chúng tôi cho rằng bạn đã chấp thuận cookie cho mục đích này.

Thành phố cũng đang cập nhật Hạng Mục Nhà Ở, Hạng Mục An Toàn và Hạng Mục Sử Dụng Đất để soạn thảo ra các chính sách do tiểu bang ủy quyền. Hạng Mục Nhà Ở sẽ xác định nhu cầu và mục tiêu về nhà ở cho niên khóa từ 2021-2029; Hạng Mục An Toàn sẽ thiết lập các chính sách hỗ trợ luật và điều lệ liên quan đến các nguy cơ an toàn; và Hạng Mục Sử Dụng Đất, Phân Vùng (Zoning) Khu Vực và Bản Đồ sẽ xác định đất có sẵn cho nông nghiệp, kinh doanh, nhà ở và các hạng mục khác.

Để biết thêm thông tin, vui lòng truy cập trang ggcity.org/housing-element hoặc liên lạc Ban Quy Hoạch theo số (714) 741-5312 hoặc gửi email theo địa chỉ planning@ggcity.org.

- Châm Phá: Goss, Chua Lãnh Ân Đã Lãnh Nạn
- Texas: Bão Dolly, Mưa Lớn Mất Điện, 2,000 Người Di Tàn
- Tt Minh Thiên Giúp Phật Tử: Giải Đáp Thắc Mắc Về Thiên
- Mã Lai: Kêu Gọi Dân Thờ Dục Để Khỏi Mập Phi



Chúng tôi sử dụng cookie để cung cấp cho bạn trải nghiệm tốt nhất trên trang web của chúng tôi. Nếu tiếp tục, chúng tôi cho rằng bạn đã chấp thuận cookie cho mục đích này. **Đồng ý**

MISCELLANEOUS ITEMS

April 29, 2021

1. Calendar of Events
2. Agenda for the May 6, 2021 Garden Grove Planning Commission special meeting.
3. League of California Cities, "CalCities," from April 23, 2021 to April 29, 2021; including Guide to Local Recovery Update: April 28.



GARDEN GROVE

CALENDAR OF EVENTS

April 29, 2021 – June 8, 2021

Thursday – Sunday	April 29 – May 2		One More Productions presents “Always ... Patsy Cline” The Gem Theater
Tuesday	May 4	6:00 p.m.	Traffic Commission Meeting, CMC
Thursday Thursday – Sunday	May 6 May 6 – 9	7:00 p.m.	Planning Commission Meeting, CMC One More Productions presents “Always ... Patsy Cline” The Gem Theater
Friday	May 7		City Hall Closed – Regular Friday Closure
Tuesday	May 11	5:30 p.m. 6:30 p.m.	Closed Session, CMC Successor Agency Meeting, CMC City Council Meeting, CMC
Thursday Thursday – Sunday	May 13 May 13 – 16	9:00 a.m.	Downtown Commission Meeting, CMC One More Productions presents “Always ... Patsy Cline” The Gem Theater
Friday	May 14	3:00 p.m.	Virtual Garden Grove College Graduates’ Reception
Thursday	May 20	7:00 p.m.	Planning Commission Meeting, CMC
Friday	May 21		City Hall Closed – Regular Friday Closure
Tuesday	May 25	5:30 p.m. 6:30 p.m.	Closed Session, CMC Housing Authority, CMC Sanitary District Board, CMC Successor Agency Meeting, CMC City Council Meeting, CMC
Monday	May 31		City Hall Closed – Memorial Day
Thursday	June 3	7:00 p.m.	Planning Commission Meeting, CMC
Friday	June 4		City Hall Closed – Regular Friday Closure
Monday	June 7	6:30 p.m.	Neighborhood Improvement and Conservation Commission Meeting, CMC
Tuesday	June 8	5:30 p.m. 6:30 p.m.	Closed Session, CMC Successor Agency Meeting, CMC City Council Meeting, CMC



A G E N D A

GARDEN GROVE PLANNING COMMISSION

SPECIAL MEETING

May 6, 2021

COMMUNITY MEETING CENTER – A/B ROOM
11300 STANFORD AVENUE

Members of the public who wish to comment on matters before the Commission, in lieu of doing so in person, may submit comments by emailing planning@ggcity.org no later than 3:00 p.m. the day of the meeting. The comments will be provided to the Commission as part of the meeting record and will be uploaded to the City's website. Members of the public are asked to consider very carefully before attending this meeting in person and are required to wear face masks and maintain a six foot distance from others. Please do not attend this meeting if you have had direct contact with someone who has tested positive for COVID-19, or if you are experiencing symptoms such as coughing, sneezing, fever, difficulty breathing or other flu-like symptoms.

REGULAR SESSION – 7:00 P.M. – A/B ROOM

ROLL CALL: CHAIR PEREZ, VICE CHAIR LINDSAY
COMMISSIONERS ARESTEGUI, CUNNINGHAM, LEHMAN, RAMIREZ,
SOEFFNER

Members of the public desiring to speak on any item of public interest, including any item on the agenda except public hearings, must do so during Oral Communications at the beginning of the meeting. Each speaker shall fill out a card stating name and address, to be presented to the Recording Secretary, and shall be limited to five (5) minutes. Members of the public wishing to address public hearing items shall do so at the time of the public hearing.

Meeting Assistance: Any person requiring auxiliary aids and services, due to a disability, should contact the Department of Community & Economic Development at (714) 741-5312 or email planning@ggcity.org 72 hours prior to the meeting to arrange for special accommodations. (Government Code §5494.3.2).

All revised or additional documents and writings related to any items on the agenda, which are distributed to all or a majority of the Planning Commissioners within 72 hours of a meeting, shall be available for public inspection (1) at the Planning Services Division during normal business hours; and (2) at the City Community Meeting Center Council Chamber at the time of the meeting.

Agenda item descriptions are intended to give a brief, general description of the item to advise the public of the item's general nature. The Planning Commission may take legislative action it deems appropriate with respect to the item and is not limited to the recommended action indicated in staff reports or the

PLEDGE OF ALLEGIANCE TO THE FLAG OF THE UNITED STATES OF AMERICA

- A. ORAL COMMUNICATIONS - PUBLIC
- B. APPROVAL OF MINUTES: April 1, 2021

C. PUBLIC HEARING(S) (Authorization for the Chair to execute Resolution shall be included in the motion.)

C.1. PLANNED UNIT DEVELOPMENT NO. PUD-128-12(A)
SITE PLAN NO. SP-099-2021

APPLICANT: RAISING CANE'S RESTAURANTS, LLC

LOCATION: EAST SIDE OF HARBOR BOULEVARD, BETWEEN
CHAPMAN AVENUE AND TWINTREE LANE AT 12202
HARBOR BOULEVARD

REQUEST: To amend Planned Unit Development No. PUD-128-12 to create a new sub-area, PUD-128-12(A), to facilitate the development of a new 3,267 square foot pad restaurant. Also, Site Plan approval to construct a 3,267 square foot drive-thru Raising Cane's Restaurant, along with associated improvements on a vacant property. The site is in the PUD-128-12 Planned Unit Development Zone. In conjunction with the request, the Planning Commission will also consider a determination that the project is categorically exempt from the California Environmental Quality Act (CEQA) pursuant to Sections 15061 - Common Sense and 15303 - New Construction or Conversion of Small Structures.

STAFF RECOMMENDATION: Recommend approval of Planned Unit Development No. PUD-128-12(A) to City Council and approval of Site Plan No. SP-099-2021, subject to the recommended Conditions of Approval.

D. MATTERS FROM COMMISSIONERS

E. MATTERS FROM STAFF

F. ADJOURNMENT

Judges needed for the 2021 Helen Putnam Award for Excellence

April 28, 2021

The 2021 Helen Putnam Award for Excellence program applications have been submitted and now it is time to determine who the winning cities are for each of the 12 categories.

Each year, Cal Cities invites fellow city officials to volunteer as a judge to review and select the winning programs.

The Helen Putnam Award for Excellence program was designed to recognize, celebrate, and promote the outstanding efforts and innovative solutions made by city governments each year. Award winners are recognized at the Cal Cities' Annual Conference & Expo, in *Western City* magazine, a statewide press release, on Cal Cities' website, and in presentations made to city council meetings.

Cal Cities is recruiting 60 volunteers to serve as judges for 11 of the 12 categories (the League Partners Award for Excellence in City-Business Relations is judged by League Partners). Once selected, judges will receive login credentials for the Helen Putnam web portal to access the award applications and to submit scores.

If you are willing to serve as a Helen Putnam Award for Excellence judge (and get a preview of some great innovations you might use in your city), please fill out [a judge application form](#) by Friday, May 7 to [Melissa Tualla](#).

If you know your city has applied under a certain category please do not volunteer for that category.

Award categories include:

- CCS Partnership Intergovernmental Collaboration Award
- Community Services and Economic Development
- Economic Development through the Arts
- Enhancing Public Trust, Ethics, and Community Involvement
- Health and Wellness Programs
- Housing Programs and Innovations
- Internal Administration
- Planning and Environmental Quality
- Public Safety
- Public Works, Infrastructure, Transportation
- Ruth Vreeland Award for Engaging Youth in City Government

If you have any questions, please contact [Melissa Tualla](#) at (916) 658-8216.

2021 City Attorneys Spring Conference starts this week!

April 28, 2021

The Spring Conference has a rich tradition of excellence in providing California city attorneys with education on the latest municipal law issues along with opportunities for connecting with colleagues from across the state.

The conference will take place on Fridays, April 30, May 7, 14, and 21, and will include a special peer-to-peer meet and greet followed by a City Attorneys Department meeting on Thursday, April 29.

What to expect at the City Attorneys Spring Conference

Sessions topics include:

April 30

- Competency and mindful lawyering (*MCLE specialty credit for competency issues*)
- Labor and employment litigation update
- Elected officials and employment law: When the rules don't apply
- I hear that train a'comin': Municipal legal issues involving railroads

May 7

- General municipal litigation update
- Emerging trends in class action challenges to revenue measures
- TNC User Tax
- City attorney escape room: Packaging legal advice for non-attorney clients

May 14

- Municipal tort and civil rights litigation update
- A rising tide against qualified immunity?
- How cities are addressing police reform
- Black Lives Matter as government speech

May 21

- Land use and CEQA litigation update
- How cities can abate nuisance properties at no cost
- New housing legislation: Lessons learned from recent litigation
- Public-private partnerships (P3s): How to deliver innovative, local-serving projects

- Public-private partnerships (P3), how to deliver innovative, local-serving projects

The League of California Cities¹ is a Multiple Activity Provider for California State Bar approved minimum continuing legal education (MCLE) and certifies this activity meets the standards for MCLE credit by the State Bar of California in the total amount of 14 hours, including 1 hour of Competency Issues sub-field credit.

¹ Provider No. 1985

Registration

Registration starts at \$250 for League members. Full conference registration includes admission to all sessions and access to all program materials and session recordings.

Member city	
	\$250
Non-city public official	
	\$400
League Partner	
	\$400
Company, all others	
	\$725

Virtual platform

The full conference will take place via Zoom. Registrants are given a login and password to access the conference page where links to sessions will be located. All sessions are going to be live, and you will have a chance to ask questions to presenters. All sessions will be recorded.

For registration questions, contact [Megan Dunn](#).

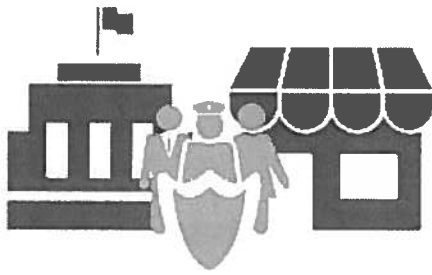
For overall program questions, please contact [Katie Pebler](#).

[Terms of Use](#)

© 2021 League of California Cities

[New Privacy Policy](#)

[Home](#) > [Policy & Advocacy](#) > [Hot Issues](#) > Guide to Local Recovery



**Guide to Local
RECOVERY**
Vibrant cities. Strong economies.

Guide to Local Recovery Update: April 28

Today, the League of California Cities hosted the latest installment of its new Guide to Local Recovery webinar series, focused on Federal Emergency Management Agency (FEMA) cost reimbursement for eligible programs and services under FEMA's Public Assistance Program. The webinar featured leaders with representatives from FEMA and the California Office of Emergency Services (Cal OES) to provide an opportunity to ask questions and get clarity on reimbursable costs. The webinar [recording](#) and [slides](#) are available online.

Next week, the White House is hosting regional briefings on the [American Jobs Plan](#) and [American Families Plan](#), and the briefing for California is Monday, May 3 at 2 p.m. All cities are invited to attend, and the briefing will be hosted by Daniel Hornung, special assistant to the president for Economic Policy. [Register](#) for the briefing.

The National League of Cities continues to update [answers to Frequently Asked Questions](#) around the local relief included in the American Rescue Plan.

- + [Advocacy Letters and Executive Director Messages](#)
- + [Local Recovery Updates](#)
- + [Local Recovery Webinars](#)
- + [State Executive Orders](#)
- + [Federal Guidance and Resources](#)