

**City of Garden Grove**  
**WEEKLY CITY MANAGER'S MEMO**  
**November 4, 2021**

TO: Honorable Mayor and City Council      FROM: Scott C. Stiles, City Manager  
Members

**I. DEPARTMENT ITEMS**

**A. CITYWORKS – NOVEMBER 2021**

The November 2021 publication of CityWorks includes information for residents, visitors, and business owners in Garden Grove.

**II. ITEMS FROM OTHER GOVERNMENTAL AGENCIES, OUTSIDE AGENCIES, BUSINESSES AND INDIVIDUALS**

**A.** *Amendment to the Notice of Treatment for the Asian Citrus Psyllid and Findings Regarding a Treatment Plan for the Asian Citrus Psyllid* from the California Department of Food and Agriculture.

**B.** Care Ambulance 3<sup>rd</sup> quarter 2021 compliance report and October 2021 compliance report.

**• OTHER ITEMS**

– SOCIAL MEDIA HIGHLIGHTS AND NEWSPAPER ARTICLES

Copies of the week's social media posts and local newspaper articles are attached for your information.

– MISCELLANEOUS ITEMS

Items of interest are included.



Scott C. Stiles  
City Manager

# City Works

Attachment I. A  
Mgrs. Memo 11/4/21  
**GARDEN GROVE**

November 2021



## Be Well

ORANGE COUNTY  
IN GARDEN GROVE

The City has partnered with Be Well OC to implement a mobile response team to provide in-community assessment and stabilization of individuals experiencing substance abuse, psychological crises, and homelessness.

Anyone in Garden Grove, regardless of income, health insurance, or any other factor, can call the Garden Grove Police Department's non-emergency line at (714) 741-5704 to request assistance from the mobile response team.

For all emergencies, please call 9-1-1.



Visit  
[ggcity.org/be-well](http://ggcity.org/be-well)  
for more information.

# GARDEN GROVE COMMUNITY CONVERSATION SERIES



Join Be Well OC for a conversation on our community's mental health, and behavioral and emotional needs. Spanish, Korean, and Vietnamese translators available.

## IN-PERSON MEETING

**Thursday, December 2**  
6:00 p.m. – 8:00 p.m.  
Community Meeting Center  
11300 Stanford Avenue  
Register at [ggcity.org/be-well](http://ggcity.org/be-well)

## VIRTUAL MEETING

**Saturday, December 11**  
10:30 a.m. – 12:00 p.m.  
Register at  
[ggcity.org/be-well](http://ggcity.org/be-well)



WITH CHANCES TO WIN  
**BiGG THIS BLACK FRIDAY**

From Black Friday, November 26 through Thursday, December 16, Garden Grove shoppers have the chance to win cash or a 1-night stay at the Great Wolf Lodge Southern California.

[GGCITY.ORG/BIGG](http://GGCITY.ORG/BIGG)



*Saturday, December 4, 2021*

3:00 p.m. – 7:00 p.m.

Village Green Park  
12732 Main Street

[ggcity.org/winterinthegrove](http://ggcity.org/winterinthegrove)

## Happy Holidays!

In observance of the Christmas and New Year's Day holidays, Garden Grove City Hall will be closed from Friday, December 24, 2021 through Monday, January 3, 2022.

Visit [ggcity.org](http://ggcity.org) for information on services available during the holidays.

## Holiday Tree Collection

Monday,  
December 27, 2021 -  
Friday, January 7, 2022



[republicservices.com](http://republicservices.com)



**THE CITY OF GARDEN GROVE**

11222 Acacia Parkway, Garden Grove, CA 92840





**CALIFORNIA DEPARTMENT OF FOOD AND AGRICULTURE**

**OFFICIAL NOTICE  
FOR COMMUNITIES IN ORANGE COUNTY  
PLEASE READ IMMEDIATELY**

**AMENDMENT TO THE NOTICE OF TREATMENT FOR  
THE ASIAN CITRUS PSYLLID**

Between April 3, 2017 to October 8, 2021, the California Department of Food and Agriculture (CDFA) confirmed the presence of the causative bacterial agent of the citrus disease huanglongbing (HLB) in citrus tree tissue and insect vectors collected in the cities of Anaheim, Fountain Valley, Fullerton, Garden Grove, Huntington Beach, Irvine, La Habra, Orange, Placentia, Rancho Santa Margarita, Santa Ana, Tustin, Westminster, and Yorba Linda, in Orange County. HLB is a devastating disease of citrus and is spread through feeding action by populations of the Asian citrus psyllid (ACP), *Diaphorina citri* Kuwayama. In order to determine the extent of the infestation, and to define an appropriate response area, additional surveys took place for several days over a 250-meter radius area, centered on the detection sites. Based on the results of the surveys, implementation of the CDFA's current ACP and HLB response strategies, which include treatment for ACP, are necessary for eradication and control.

A Program Environmental Impact Report (PEIR) has been certified which analyzes the ACP and HLB treatment program in accordance with Public Resources Code, section 21000 et seq. The PEIR is available at <http://www.cdfa.ca.gov/plant/peir/>. The treatment activities described below are consistent with the PEIR.

In accordance with integrated pest management principles, CDFA has evaluated possible treatment methods and determined that there are no physical, cultural or biological control methods available to control ACP in this area. The Notice of Treatment and the associated Proclamation of Emergency Program are valid until October 8, 2022, which is the amount of time necessary to determine that the treatment was successful.

The treatment plan for the ACP infestation will be implemented within a 250-meter radius of each detection site, as follows:

- Tempo® SC Ultra (cyfluthrin), a contact insecticide for controlling the adults and nymphs of ACP, will be applied from the ground using hydraulic spray equipment to the foliage of host plants; and
- Merit® 2F or CoreTect™ (imidacloprid), a systemic insecticide for controlling the immature life stages of ACP, will be applied to the soil underneath host plants. Merit® 2F is applied from the ground using hydraulic spray equipment. CoreTect™, which is used in place of Merit® 2F in situations where there are environmental concerns about soil surface runoff of liquid Merit® 2F, is applied by inserting tablets into the ground and watering the soil beneath the host plants.

**Public Notification:**

Residents of affected properties shall be invited to a public meeting or contacted directly by CDFA staff. Consultation with the California Department of Pesticide Regulation, the Office of Environmental Health Hazard Assessment, and the county agricultural commissioner's office

will be provided at the public meeting or upon request to address residents' questions and concerns.

Residents are notified in writing at least 48 hours in advance of any treatment in accordance with the Food and Agricultural Code sections 5771-5779 and 5421-5436.

Following the treatment, completion notices are left with the residents detailing precautions to take and post-harvest intervals applicable to the citrus fruit on the property.

Treatment information is posted at [http://cdfa.ca.gov/plant/acp/treatment\\_maps.html](http://cdfa.ca.gov/plant/acp/treatment_maps.html). Press releases, if issued, are prepared by the CDFA information officer and the county agricultural commissioner, in close coordination with the program leader responsible for treatment. Either the county agricultural commissioner or the public information officer serves as the primary contact to the media.

Information concerning the HLB/ACP program shall be conveyed directly to local and State political representatives and authorities via letters, emails, and/or faxes.

For any questions related to this program, please contact the CDFA toll-free telephone number at 800-491-1899 for assistance. This telephone number is also listed on all treatment notices.

Enclosed are the findings regarding the treatment plan, a November 22, 2017 University of California and United States Department of Agriculture briefing paper on the increasing detection rate of ACP/HLB, maps of the treatment area, work plan, integrated pest management analysis of alternative treatment methods, and a pest profile.

Attachments

**FINDINGS REGARDING A TREATMENT PLAN FOR  
THE ASIAN CITRUS PSYLLID  
Orange County  
Program CS-9883**

Between April 3, 2017 to October 8, 2021, the California Department of Food and Agriculture (CDFA) confirmed the presence of the causative bacterial agent of the citrus disease huanglongbing (HLB) in citrus tree tissue and insect vectors collected in the cities of Anaheim, Fountain Valley, Fullerton, Garden Grove, Huntington Beach, Irvine, La Habra, Orange, Placentia, Rancho Santa Margarita, Santa Ana, Tustin, Westminster, and Yorba Linda, in Orange County. HLB is a devastating disease of citrus and is spread through feeding action by populations of the Asian citrus psyllid (ACP), *Diaphorina citri* Kuwayama.

Additional surveys were conducted by CDFA in order to determine the extent of the infestation in Orange County and to define an appropriate response area. Each survey took place for several days over a 250-meter radius area, centered on the following detections: June 18, 2019, La Habra; November 20, 2019, Placentia; July 3, 2020, Fountain Valley; August 28, 2020, Tustin; April 26, 2021, Irvine; May 10, 2021, Fullerton; July 2, 2021, Yorba Linda; July 30, 2021, Santa Ana; August 6, 2021, Huntington Beach; September 16, 2021, Garden Grove; October 1, 2021, Orange; October 8, 2021, Anaheim, Rancho Santa Margarita, and Westminster. Based on these surveys, pest biology, findings and recommendations from California's HLB Task Force, the Primary State Entomologist, the Primary State Plant Pathologist, United States Department of Agriculture (USDA) experts on HLB and ACP, county agricultural commissioner representatives who are knowledgeable on HLB and ACP, and experience gained from USDA's control efforts in the southeastern United States, I have determined that an infestation of HLB exists and it poses a statewide imminent danger to the environment and economy.

The results of the additional surveys also indicated that the local infestation is amenable to CDFA's ACP and HLB emergency response strategies, which include chemical control treatment. This option was selected based upon minimal impacts to the natural environment, biological effectiveness, minimal public intrusiveness, and cost.

HLB is considered one of the most devastating diseases of citrus in the world. The bacterium that causes the disease, *Candidatus Liberibacter asiaticus*, blocks the flow of nutrients within the tree and causes the tree to starve to death within two to five years of infection. There is no cure. Symptoms of HLB include yellow shoots with mottling and chlorosis of the leaves, misshapen fruit, fruit that does not fully color, and fruit that has a very bitter taste, which makes it inedible for human consumption. These symptoms often do not appear until two years after infection, making this particular disease difficult to contain and suppress. These undesirable symptoms of HLB-infected trees result in the trees' loss of commercial and aesthetic value while at the same time such trees are hosts for spreading HLB.

ACP is an insect pest that is native to Asia. It has appeared in Central and South America. In the United States, ACP has been found in Alabama, Arizona, Florida, Georgia, Hawaii, Louisiana, Mississippi, South Carolina, and Texas. In California, ACP has been found in twenty-eight counties.

ACP feeds on members of the plant family Rutaceae, primarily on *Citrus* and *Murraya* species, but is also known to attack several other genera, including over forty species of plant that act as hosts and possible carriers. The most serious damage to the environment and property caused by ACP – the death and loss in value of host plants – is due to its vectoring HLB. In addition, the psyllids also cause injury to their host plants via the withdrawal of large amounts of sap as they feed and via the

production of large amounts of honeydew, which coats the leaves of the tree and encourages the growth of sooty mold. Sooty mold blocks sunlight from reaching the leaves.

These pests present a significant and imminent threat to the natural environment, agriculture, and economy of California. For example, HLB would have severe consequences to both the citrus industry and to the urban landscape via the decline and the death of citrus trees. California is the top citrus-producing state in the U.S., with total production valued at over \$2.2 billion. Recent studies in Florida have shown that the presence of HLB increases citrus production costs by up to 40 percent and has resulted in a loss of over \$7 billion and 6,600 jobs.

Additionally, if unabated, the establishment of HLB in California would harm the natural environment as commercial and residential citrus growers would be forced to increase pesticide use. And, the establishment of HLB could lead to enforcement of quarantine restrictions by the USDA and our international trading partners. Such restrictions would jeopardize California's citrus exports, which are valued at over \$800 million per year.

The causative bacteria of HLB was first detected in Los Angeles in 2012. It has subsequently been detected in Orange, Riverside, San Bernardino, and San Diego counties. Prior to November 2017, the level of HLB risk in California was thought to be relatively stable. However, on November 22, 2017, the University of California and the United States Department of Agriculture released a briefing paper that indicates, beginning in June 2017, a sharp increase in HLB and HLB-positive ACP detections, cities containing HLB, and ACP nymphs. With the release of the November 22, 2017 briefing paper, the Department became aware of the exponential intensification of the HLB epidemic, as demonstrated by the indicators contained in the paper.

Infected trees are destroyed as soon as they are discovered. However, due to the length of time it takes for symptoms to appear on infected trees, new infestations continue to be discovered. If the current infestation is not abated immediately, ACP will likely become established in neighboring counties and could pave the way for a statewide HLB infestation.

CDFA has evaluated possible treatment methods in accordance with integrated pest management (IPM) principles. As part of these principles, I have considered the following treatments for control of ACP: 1) physical controls; 2) cultural controls; 3) biological controls; and 4) chemical controls. Upon careful evaluation of each these options, I have determined that it is necessary to address the imminent threat posed by HLB using currently available technology in a manner that is recommended by the HLB Task Force.

Based upon input from the HLB Task Force, the Primary State Entomologist, the Primary State Plant Pathologist, USDA experts on HLB and ACP, and county agricultural commissioner representatives who are knowledgeable on ACP and HLB, I find there are no physical, cultural or biological control methods that are both effective against ACP and allow CDFA to meet its statutory obligations, and therefore it is necessary to conduct chemical treatments to abate this threat. As a result, I am ordering insecticide treatments for ACP using ground-based equipment within a 250-meter radius around each HLB detection site and any subsequent sites.

A Program Environmental Impact Report (PEIR) has been prepared which analyzes the ACP and HLB treatment program in accordance with Public Resources Code (PRC), section 21000 et seq. The PEIR was certified in December 2014 and is available at <http://www.cdfa.ca.gov/plant/peir/>. The PEIR addresses the treatment of the ACP and HLB at the program level and provides guidance on future actions against ACP and HLB. It identifies feasible alternatives and possible mitigation measures to be implemented for individual ACP and HLB treatment activities. The ACP and HLB

program have incorporated the mitigation measures and integrated pest management techniques as described in the PEIR. In accordance with PRC section 21105, this PEIR has been filed with the appropriate local planning agency of all affected cities and counties. No local conditions have been detected which would justify or necessitate preparation of a site-specific plan.

### **Sensitive Areas**

CDFA has consulted with the California Department of Fish and Wildlife's California Natural Diversity Database for threatened or endangered species, the United States Fish and Wildlife Service, the National Marine Fisheries Service and the California Department of Fish and Wildlife when rare and endangered species are located within the treatment area. Mitigation measures for rare and endangered species will be implemented as needed. The CDFA shall not apply pesticides to bodies of water or undeveloped areas of native vegetation. All treatment shall be applied to residential properties, common areas within residential development, non-agricultural commercial properties, and rights-of-way.

### **Work Plan**

The proposed treatment area encompasses those portions of Orange County which fall within a 250-meter radius area around the properties on which the causative agent of HLB has been detected, and any subsequent detection sites within the proposed treatment boundaries. The Notice of Treatment and the associated Proclamation of Emergency Program are valid until October 8, 2022, which is the amount of time necessary to determine that the treatment was successful. Maps of the treatment boundaries are attached. The work plan consists of the following elements:

1. **ACP Monitoring.** Visual surveys within a 250-meter radius around each HLB detection site will be conducted to monitor post-treatment ACP populations.
2. **ACP and HLB Visual Survey.** All host plants will be inspected for ACP and for HLB symptoms within a 250-meter radius around each HLB detection site, at least twice a year. ACP and host plant tissue will be collected and forwarded to a USDA accredited laboratory for identification and analysis.
3. **HLB Disease Testing.** All host tree tissues, and ACP life stages shall be tested for the presence of HLB.
4. **Treatment.** All properties with host plants within a 250-meter radius around each HLB detection site shall be treated according to the following protocol to control ACP:
  - a. Tempo® SC Ultra, containing the contact pyrethroid insecticide cyfluthrin, shall be applied by ground-based hydraulic spray equipment to the foliage of host plants for controlling the adults and nymphs of ACP. Treatment may be reapplied up to three times annually if additional ACP are detected.
  - b. Either Merit® 2F or CoreTect™, containing the systemic insecticide imidacloprid, will be applied to the root zone beneath host plants for controlling developing nymphs and providing long term protection against reinfestation. Merit® 2F is applied as a soil drench, while CoreTect™ tablets are inserted two to five inches below the soil surface and watered in to initiate tablet dissolution. CoreTect™ is used in place of Merit® 2F in



situations where there are environmental concerns about soil surface runoff of the liquid Merit® 2F formulation, such as host plants growing next to ponds and other environmentally sensitive areas. Treatment may be re-applied once annually if additional ACPs are detected.

## Public Information

Residents of affected properties shall be invited to a public meeting or contacted directly by CDFA staff. Consultation with the California Department of Pesticide Regulation, the Office of Environmental Health Hazard Assessment, and the county agricultural commissioner's office will be provided at the public meeting or upon request to address residents' questions and concerns.

Residents shall be notified in writing at least 48 hours in advance of any treatment in accordance with the Food and Agricultural Code (FAC), sections 5771-5779 and 5421-5436.

After treatment, completion notices are left with the residents detailing precautions to take and post-harvest intervals applicable to the citrus fruit. Treatment information is posted at [http://cdfa.ca.gov/plant/acp/treatment\\_maps.html](http://cdfa.ca.gov/plant/acp/treatment_maps.html).

For any questions related to this program, please contact the CDFA toll-free telephone number at 800-491-1899 for assistance. This telephone number is also listed on all treatment notices. Treatment information is posted at [http://cdfa.ca.gov/plant/acp/treatment\\_maps.html](http://cdfa.ca.gov/plant/acp/treatment_maps.html).

Press releases, if issued, are prepared by the CDFA information officer and the county agricultural commissioner, in close coordination with the program leader responsible for treatment. Either the county agricultural commissioner or the public information officer serves as the primary contact to the media.

Information concerning the HLB/ACP program will be conveyed directly to local and State political representatives and authorities via letters, emails, and/or faxes.

## Findings

HLB and ACP pose a significant and imminent threat to California's natural environment, agriculture, public and private property, and its economy.

The work plan involving chemical control of these pests is necessary to prevent loss and damage to California's natural environment, citrus industry, native wildlife, private and public property, and food supplies.

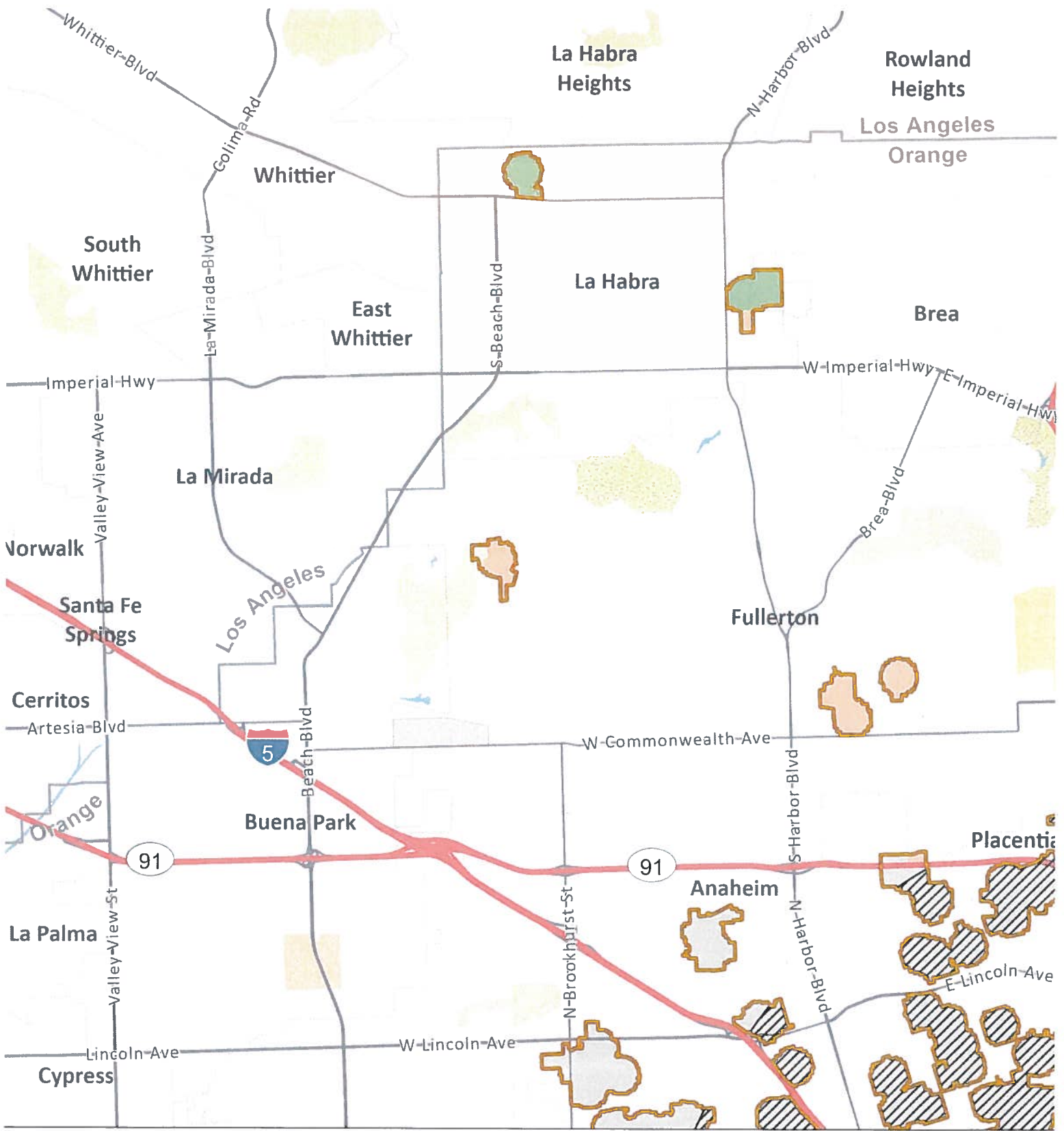
My decision to adopt findings and take action is based on FAC sections 24.5, 401.5, 403, 407, 408, 5401-5405, and 5761-5764.

**Karen Ross**  
Digitally signed by Karen Ross  
Date: 2021.10.29 13:50:45  
-07'00'

Karen Ross, Secretary

**October 29, 2021**

Date



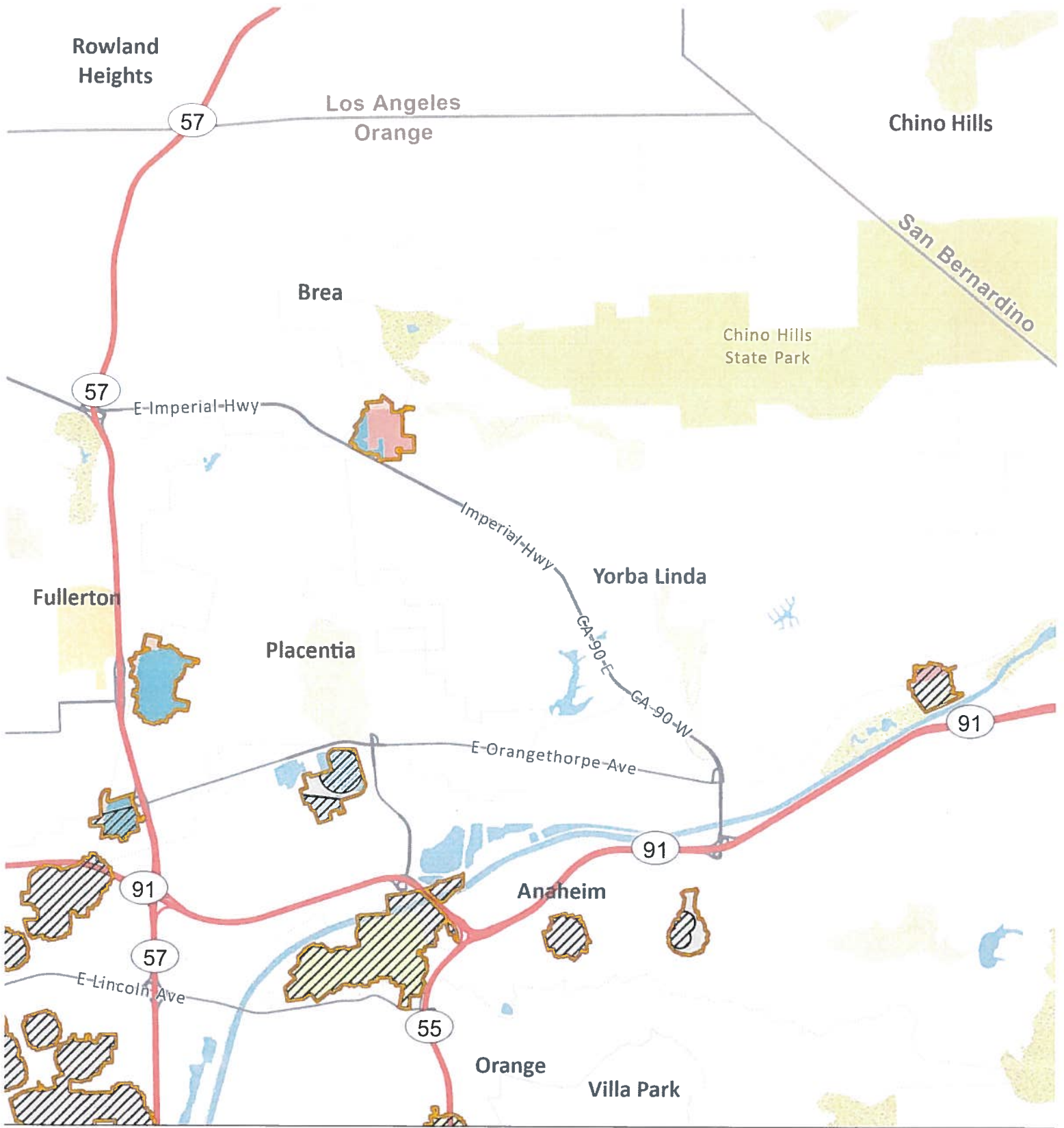
Asian Citrus Psyllid Program - Notification of Treatment Map  
 Orange County Amendment 36 (2021) - Portions of Orange County - Part 1

-  Existing Treatment Area
-  New Treatment Area
-  Environmental Sensitive Area  
Treatment Mitigation in Place

City or Census-Designated Place Within Treatment Area

- |  |  |  |   |
|--|--|--|---|
|  Anaheim      |  Huntington Beach |  Placentia              |  Villa Park  |
|  Brea         |  Irvine           |  Rancho Santa Margarita |  Westminster |
|  Fullerton    |  La Habra         |  Santa Ana              |  Yorba Linda |
|  Garden Grove |  North Tustin     |  Stanton                |   |
|  |  Orange           |  Tustin                 |   |

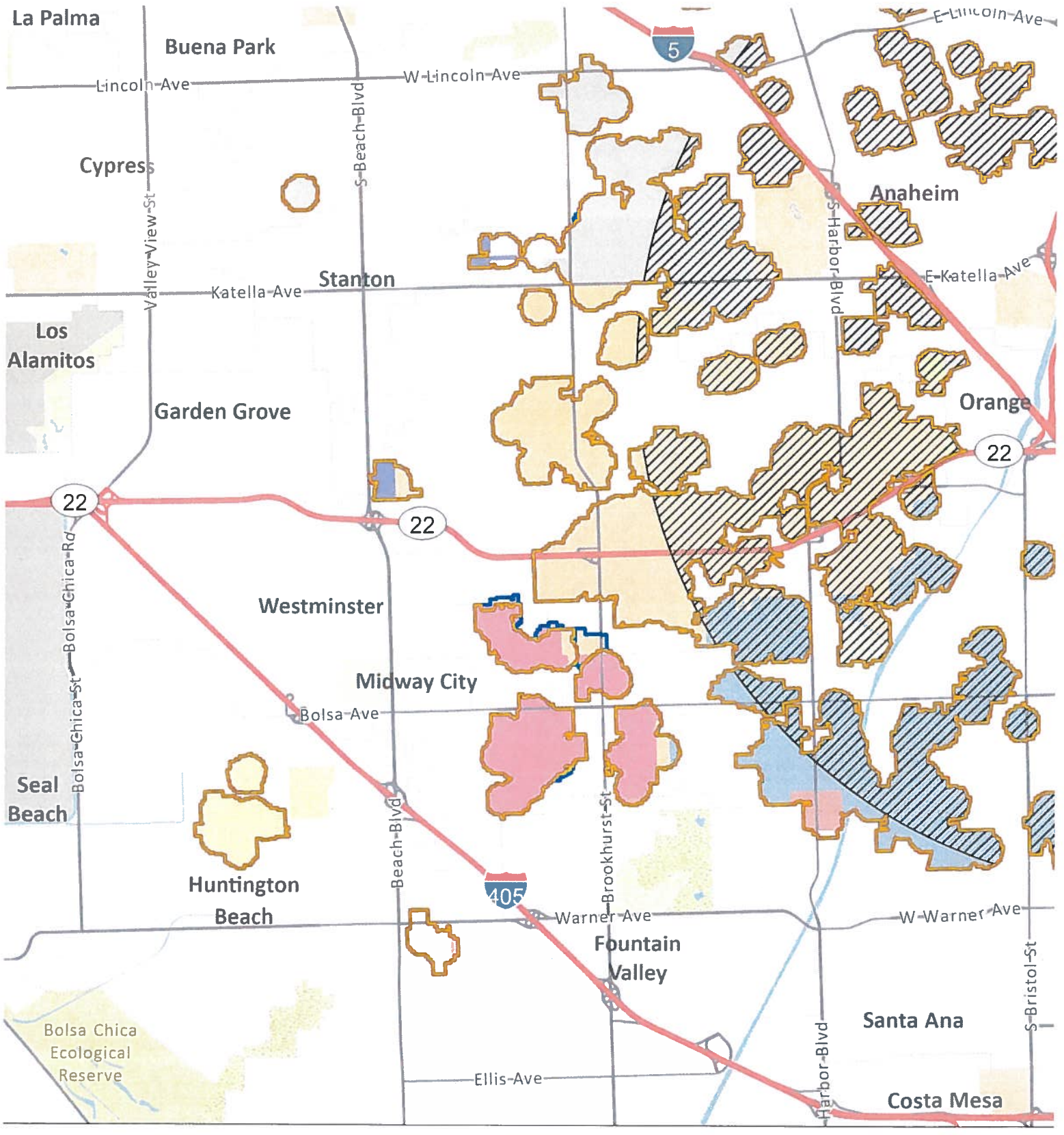




Asian Citrus Psyllid Program - Notification of Treatment Map  
 Orange County Amendment 36 (2021) - Portions of Orange County - Part 2



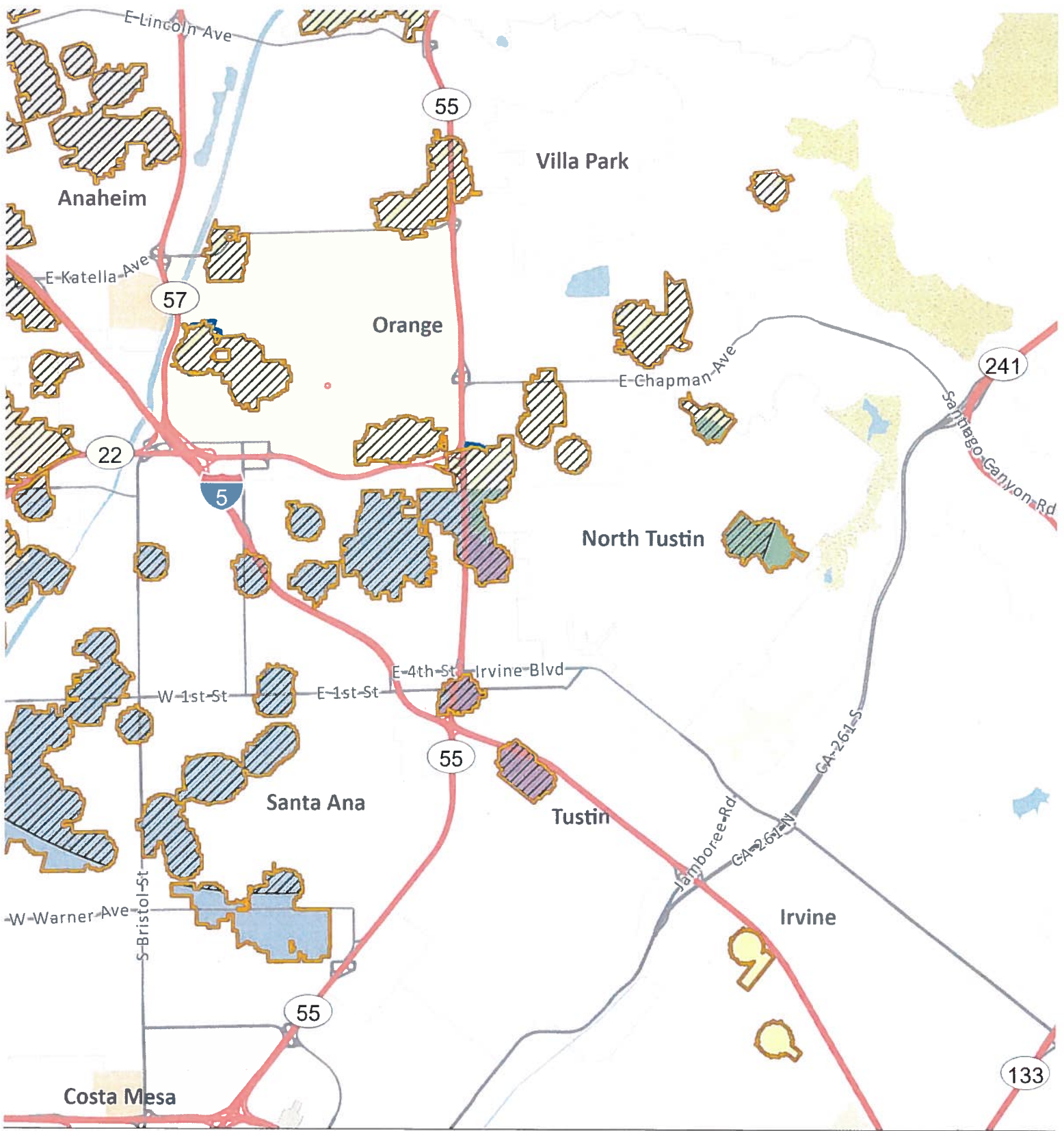
- |   |   |                  |                        |
|---|---|------------------|------------------------|
| Existing Treatment Area                                     | City or Census-Designated Place Within Treatment Area |                  |                        |
| New Treatment Area  | Anaheim   | Huntington Beach | Placentia              |
| Environmental Sensitive Area. Treatment Mitigation in Place | Brea  | Irvine           | Rancho Santa Margarita |
|   | Fountain Valley                                       | La Habra         | Santa Ana              |
|   | Fullerton   | North Tustin     | Stanton                |
|   | Garden Grove  | Orange           | Tustin                 |
|   |   |                  | Villa Park             |
|   |   |                  | Westminster            |
|   |   |                  | Yorba Linda            |



Asian Citrus Psyllid Program - Notification of Treatment Map  
 Orange County Amendment 36 (2021) - Portions of Orange County - Part 3



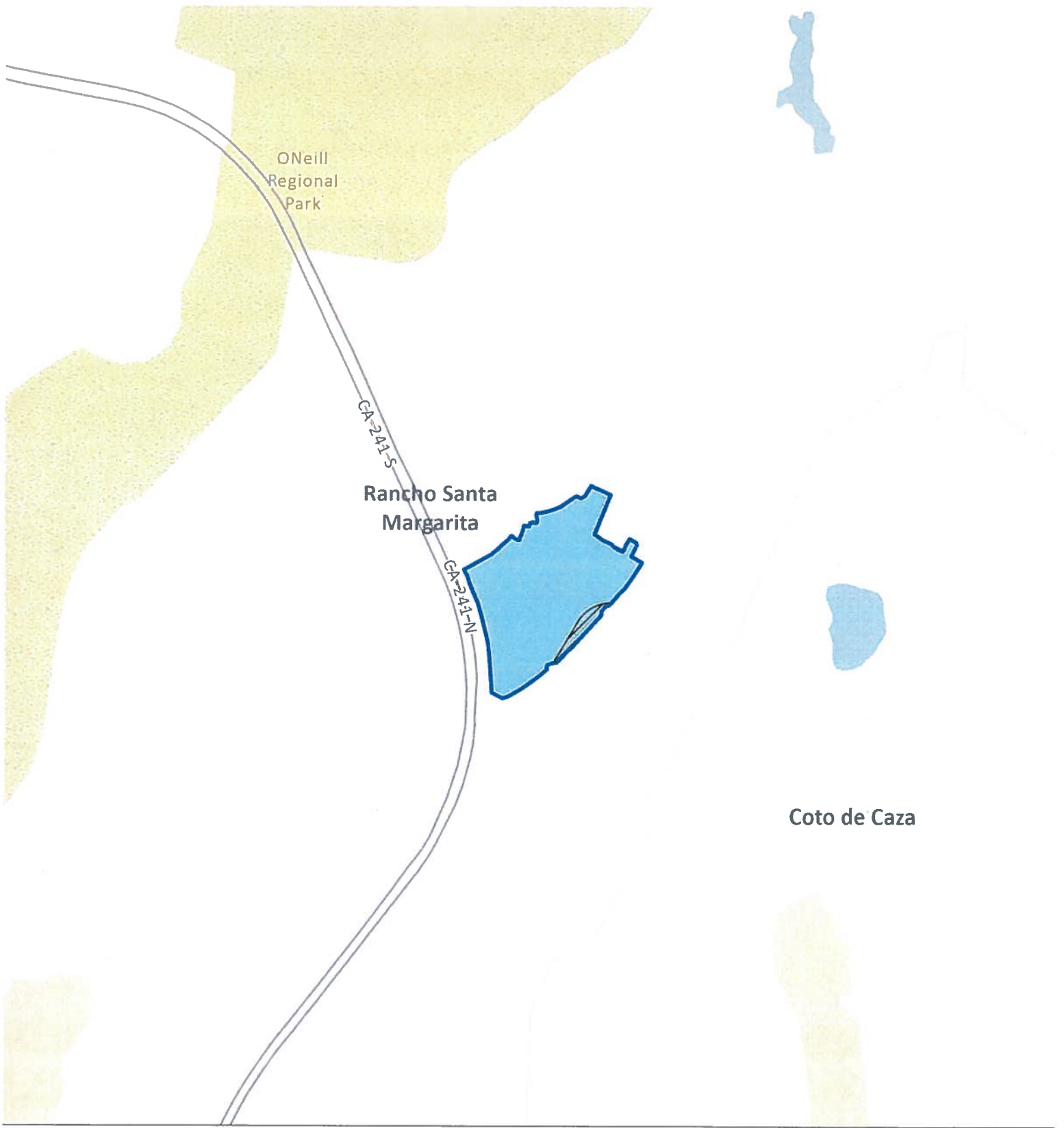
- |   |   |                  |                        |
|---|---|------------------|------------------------|
| Existing Treatment Area                                     | City or Census-Designated Place Within Treatment Area |                  |                        |
| New Treatment Area  | Anaheim   | Huntington Beach | Placentia              |
| Environmental Sensitive Area; Treatment Mitigation in Place | Brea  | Irvine           | Rancho Santa Margarita |
|   | Fountain Valley                                       | La Habra         | Santa Ana              |
|   | Fullerton   | North Tustin     | Stanton                |
|   | Garden Grove  | Orange           | Tustin                 |
|   |   |                  | Villa Park             |
|   |   |                  | Westminster            |
|   |   |                  | Yorba Linda            |



Asian Citrus Psyllid Program - Notification of Treatment Map  
 Orange County Amendment 36 (2021) - Portions of Orange County - Part 4



- |   |   |                  |                        |
|---|---|------------------|------------------------|
| Existing Treatment Area                                     | City or Census-Designated Place Within Treatment Area |                  |                        |
| New Treatment Area  | Anaheim   | Huntington Beach | Placentia              |
| Environmental Sensitive Area. Treatment Mitigation in Place | Brea  | Irvine           | Rancho Santa Margarita |
|   | Fountain Valley                                       | La Habra         | Santa Ana              |
|   | Fullerton   | North Tustin     | Stanton                |
|   | Garden Grove  | Orange           | Tustin                 |
|   |   |                  | Villa Park             |
|   |   |                  | Westminster            |
|   |   |                  | Yorba Linda            |



Asian Citrus Psyllid Program - Notification of Treatment Map  
 Orange County Amendment 36 (2021) - Portions of Orange County - Part 5



- Existing Treatment Area
- New Treatment Area
- Environmental Sensitive Area. Treatment Mitigation in Place

City or Census-Designated Place Within Treatment Area

- |                 |                  |                        |             |
|-----------------|------------------|------------------------|-------------|
| Anaheim         | Huntington Beach | Placentia              | Villa Park  |
| Brea            | Irvine           | Rancho Santa Margarita | Westminster |
| Fountain Valley | La Habra         | Santa Ana              | Yorba Linda |
| Fullerton       | North Tustin     | Stanton                |             |
| Garden Grove    | Orange           | Tustin                 |             |

## **I. Detection and Survey Activities for ACP**

### **A. Urban and Rural Residential Detection Trapping and Visual Survey**

Trapping for Asian citrus psyllid (ACP) is a cooperative State/County trapping program to provide early detection of an infestation in a county. Traps are serviced by either State or County agricultural inspectors. The trap used for ACP detection is the yellow panel trap, which is a cardboard panel coated with an adhesive on each side. ACP becomes entangled on the sticky surface and cannot move off the trap. Yellow panel traps have proven successful at detecting infestations of ACP. At all locations where traps are placed, the host plant is visually inspected for ACP. If ACP is detected, the host is visually surveyed for additional ACP and symptoms of Huanglongbing (HLB).

- Trap Density: Five to 16 traps/square mile.
- Trap Servicing Interval: Monthly.
- Trap Relocation and Replacement: Traps are relocated and replaced every four to eight weeks to another host with a minimum relocation distance of 500 feet.
- Visual surveys and/or tap sampling are conducted once at each trapping site when the trap is placed.

### **B. Commercial Grove Trapping**

In counties with substantial commercial citrus production, and which are not generally infested with ACP, traps are placed within the groves at the density of one trap per 40 acres. Traps are replaced every two weeks and submitted for screening. In areas that are generally infested with ACP, agricultural inspectors visually survey commercial groves for plant tissue displaying symptoms of HLB and collect ACP which are tested for HLB.

### **C. Delimitation Trapping and Visual Survey Outside of the Generally Infested Area**

The protocols below are the actions in response to the detection of ACP in counties north of Santa Barbara County and the Tehachapi Mountains.

#### **1. Response to the Detection of One or More ACP**

##### **a. Trapping**

ACP traps are placed at a density of 50 traps per square mile in a four-square mile delimitation area centered on the detection site. Traps are serviced weekly for one month. If no additional ACP are detected, the traps are serviced monthly for one year past the date the ACP was identified. Subsequent detections may increase the size of the delimitation survey area and restarts the one-year duration on the trap servicing requirement.

##### **b. Visual Survey**

All find sites and adjacent properties are visually surveyed for ACP and HLB. Additional sites may be surveyed as part of the risk-based survey.

## **II. Detection and Survey Activities for HLB**

### **HLB Delimitation Survey**

Upon confirmation of an HLB infected citrus tree (or host plant), a mandatory delimitation survey is initiated in the 250-meter radius area surrounding the detection. All host plants are visually surveyed for symptoms of HLB and presence of ACP. Plant and insect samples are collected

Asian Citrus Psyllid/Huanglongbing Work Plan  
December 2020

from every host plant in the 250-meter area and subsequently analyzed for HLB-associated bacteria.

### III. Treatment Activities

#### Treatment

The Citrus Pest and Disease Prevention Division (CPDPD) treatment activities for ACP vary throughout the state and depend on multiple factors.

#### Factors CPDPD considers prior to treatment include:

- Determination if suppression of ACP is feasible;
- The proximity of the ACP infestation to commercial citrus;
- Whether growers are conducting coordinated treatment activities;
- The level of HLB risk; and
- Consistency with the overall goal of protecting the state's commercial citrus production.

#### Scenarios Throughout the State in which Treatment Occurs:

- In areas with commercial citrus production that are generally infested with ACP, and where all growers are treating on a coordinated schedule, CPDPD may conduct residential buffer treatments to suppress ACP populations.
- In areas where HLB is detected, CPDPD conducts residential treatments to suppress ACP populations.
- In areas where ACP has not been previously detected, or where ACP has been detected at low densities, CPDPD conducts residential treatments in response to ACP detections to prevent ACP establishment or suppress populations.
- In areas where ACP has been detected along the California-Mexico border, CPDPD conducts residential treatments in response to ACP detections to suppress ACP populations.

CPDPD's current policy is to not conduct treatments in areas that are generally infested if there is limited or no commercial citrus production in the area, or if all growers in the area are not treating.

#### 1. Treatment Protocols

A Program Environmental Impact Report (PEIR) has been certified which analyzes the ACP treatment program in accordance with Public Resources Code, Sections 21000 et seq. The PEIR is available at <http://www.cdfa.ca.gov/plant/peir>. The treatment activities described below are consistent with the PEIR.

In accordance with the integrated pest management principles, CPDPD has evaluated possible treatment methods and determined that there are no physical, cultural, or biological controls available to eliminate ACP from an area.

In general, when treatment has been deemed appropriate, CPDPD applies insecticides to host trees in the residential (urban) areas in a 50 to 800-meter radius around each detection site. Only ACP host plants are treated.

##### a. International Border Treatments

CPDPD treats citrus host plants in the residential area within two miles of the California-Mexico border. This treatment is conducted within a 400-meter buffer surrounding ACP



Asian Citrus Psyllid/Huanglongbing Work Plan  
December 2020

detections that are within two miles of the California-Mexico border, within one year. In this case, a Notice of Treatment (NOT) is issued. A public meeting is held at least once a year.

**b. Within a Generally Infested Area with Commercial Citrus Production**

CPDPD treats citrus host plants within a 250-meter buffer surrounding commercial citrus groves if the growers are conducting coordinated treatments in 90 percent of the designated Psyllid Management Area (PMA) and have completed two out of three of the coordinated treatments. There is flexibility and an opportunity for treatment from CPDPD if growers are participating in these treatments for the first time and have achieved 90 percent participation in the PMA and if ACP have been detected within one mile of the commercial citrus groves within one year. The exception is Imperial County, which has fewer residential properties, and therefore residential citrus host plants are treated within 800 meters of commercial citrus. A NOT is issued. A public meeting is held at least once per year.

**c. Outside of the Generally Infested Area**

The actions below are in response to the detection of one or more ACP, whether collected live or in a trap, in counties north of Santa Barbara County and the Tehachapi Mountains.

- Detection of one ACP at one site - All properties with hosts within a 50-meter radius of the detection site are treated. A subsequent detection of one or more ACP within 400-meters will result in all properties with hosts within 400-meters of the detection site(s) being treated.
- Detection of two or more ACP at one site - All properties with hosts within a 400-meter radius of the detection site are treated.
- A NOT is issued.
- A public meeting is held at least once per year.

**d. In response to an HLB Detection**

- All properties within a 250-meter radius of the detection site are treated.
- A NOT is issued for HLB positive tree detections and ACP detections that are positive for the bacteria that causes HLB.
- All host plants found to be infected with HLB are destroyed.
  - Infected host plants are removed and destroyed by mechanical means.
- A Proclamation of an Emergency Program (PEP) is issued for HLB positive tree detections.
- A public meeting is held at least once per year.

**2. Treatment Methodology**

The treatment protocol consists of both a foliar and a systemic insecticide. The foliar Insecticide is used for immediate reduction of the adult population in order to prevent the adults from dispersal. The systemic insecticide is a soil treatment used to kill the sedentary nymphs and provide long term protection against reinfestation. Treatment frequency is dependent on the insecticide applied and severity of the infestation. Treatments will end no later than two years after the last psyllid detection in the treatment area.

Asian Citrus Psyllid/Huanglongbing Work Plan  
December 2020

CPDPD uses registered pesticides and follows the label directions. The treatment protocol may be adjusted to use only the foliar or the systemic insecticide to allow for mitigations in special situations.

**a. Foliar Treatment**

Tempo® SC Ultra (cyfluthrin) is a pyrethroid contact insecticide. Treatment initially occurs once, and subsequent applications may occur for up to three times annually if additional psyllids are detected. This material is applied to the foliage of all host plants using hydraulic spray or hand spray equipment.

**b. Soil Treatment**

A systemic soil application is made using either Merit® 2F or CoreTect™.

- Merit® 2F (imidacloprid), is a neonicotinoid systemic insecticide. Treatment initially occurs once, and a subsequent application may occur once on an annual basis if additional psyllids are detected. This material is applied to the soil within the root zone of host plants.
- CoreTect™ (imidacloprid) is a neonicotinoid systemic insecticide. It is used in place of Merit® 2F in situations where there are environmental concerns about soil surface runoff of the liquid Merit® 2F formulation, such as host plants growing next to ponds and other environmentally sensitive areas. Treatment initially occurs once, with a subsequent application once on an annual basis if additional psyllids are detected. This material is a pelletized tablet and is inserted into the soil and watered in within the root zone of host plants.

# INTEGRATED PEST MANAGEMENT ANALYSIS OF ALTERNATIVE TREATMENT METHODS FOR CONTROL OF THE ASIAN CITRUS PSYLLID AND HUANGLONGBING

## May 2018

The treatment program used by the California Department of Food and Agriculture (CDFA) for control of the Asian citrus psyllid (ACP), *Diaphorina citri* (Hemiptera: Psyllidae), and the disease it transmits, namely Huanglongbing, *Candidatus Liberibacter asiaticus*, targets multiple life stages. A contact insecticide is used for an immediate control of ACP adults in order to prevent spread, and a systemic insecticide is used to control developing ACP nymphs and to give the plant long term protection from re-infestation. The contact insecticide preferentially used contains the synthetic pyrethroid cyfluthrin, while the systemic insecticide contains the synthetic neonicotinoid imidacloprid. Both products have been shown to be effective against ACP elsewhere, particularly in Florida. In addition, HLB-infected plants are removed in their entirety and destroyed, in order to remove a reservoir for the disease. The California Huanglongbing Task Force, a joint government, university, and industry group formed in 2007 to provide guidance to the CDFA on matters pertaining to ACP and HLB has endorsed the use of these chemicals in the CDFA's treatment program.

Below is an evaluation of alternative treatment methods to control ACP and HLB which have been considered for treatment programs in California.

### A. PHYSICAL CONTROL

**Mass Trapping.** Mass trapping of adults involves placing a high density of traps in an area in an attempt to physically remove them before they can reproduce. The current available trapping system for ACP relies on short distance visual stimulus, and is not considered effective enough to use in a mass trapping program.

**Active Psyllid Removal.** Adult ACPs are mobile daytime fliers, and adults could theoretically be netted or collected off of foliage. However, due to their ability to fly when disturbed, and the laborious and time-prohibitive task of collecting minute insects from several properties by hand, it would be highly unlikely that all adults could be captured and removed. Nymphs attach themselves to developing leaves and stems via their proboscis. Therefore, physical removal of the nymphs would entail removal of the growing shoots which will stunt the tree and reduce fruit production. For these reasons, mechanical control is not considered to be an effective alternative.

**Host Removal.** Removal of host plants for ACP would involve the large-scale destruction of plants and their roots by either physical removal or phytotoxic herbicides. Additionally, host removal could promote dispersal of female psyllids in search of hosts outside of the treatment area, thus spreading the infestation. For these reasons, host removal is considered inefficient and too intrusive to use over the entirety of the treatment areas used for ACP. However, physical host removal of HLB-infected plants in their entirety is used for HLB control, because it is limited in scope to just the infected tree and it is effective at eliminating the disease reservoir, thereby preventing further spread of the disease by ACP.

### B. CULTURAL CONTROL

**Cultural Control.** Cultural controls involve the manipulation of cultivation practices to reduce the prevalence of pest populations. These include crop rotation, using pest-resistant varieties, and intercropping with pest-repellent plants. None of these options are applicable for ACP control in an urban environment, and may only serve to drive the psyllids outside the treatment area, thus spreading the infestation.

## C. BIOLOGICAL CONTROL

**Microorganisms.** No single-celled microorganisms, such as bacteria, are currently available to control ACP.

**Nematodes.** Entomopathogenic nematodes can be effective for control of some soil-inhabiting insects, but are not effective, nor are they used, against above ground insects such as psyllids.

**Parasites and Predators.** There have been two parasites released in Florida against ACP, but only one of these are considered somewhat successful there, namely *Tamarixia radiata* (Hymenoptera: Eulophidae). This insect has been released into the environment in southern California. The CDFA is working with the citrus industry to pursue options for incorporating this parasite into treatment programs statewide. In addition, a second wasp has been recently released by the University of California Riverside, *Diaphorencyrtus aligarhensis*.

**Sterile Insect Technique (SIT).** SIT involves the release of reproductively sterile insects which then mate with the wild population, resulting in the production of infertile eggs. SIT has neither been researched nor developed for ACP, nor has it been developed for any species of psyllids, and is therefore unavailable.

## D. CHEMICAL CONTROL

**Foliar Treatment.** A number of contact insecticides have been researched for use against ACP elsewhere, particularly in Florida. Contact insecticides are more effective against adult ACPs than the sedentary nymphs because adults actively move around on plants, thereby coming into contact with residues, whereas nymphs have to be directly sprayed in order for them to come into contact. The following product has been identified for use by the CDFA, based on a combination of effectiveness against ACP, worker and environmental safety, and California registration status.

Tempo® SC Ultra is a formulation of cyfluthrin which is applied to the foliage of all host plants. Tempo® SC Ultra is a broad-spectrum synthetic pyrethroid insecticide which kills insects on contact. Tempo® SC Ultra has no preharvest interval, which makes it compatible with residential fruit-growing practices.

**Soil Treatment.** A number of systemic insecticides have been researched for use against ACP elsewhere, particularly in Florida. Systemic insecticides are particularly effective against psyllid nymphs because nymphs spend much of their time feeding, thereby acquiring a lethal dose. The following products have been identified for use by the CDFA, based on a combination of effectiveness against ACP, worker and environmental safety, and California registration status.

Merit® 2F is a formulation of imidacloprid which is applied to the root system of all host plants via a soil drench. Imidacloprid is a synthetic neonicotinoid insecticide which controls a number of other phloem feeding pests such as psyllids, aphids, mealybugs, etc.

CoreTect™ is a formulation of imidacloprid which is applied to the root system of all host plants via insertion of a tablet into the soil, followed by watering. It is used in place of Merit® 2F in situations where there are environmental concerns about soil surface runoff of the liquid Merit® 2F formulation, such as host plants growing next to ponds and other environmentally sensitive areas.

## E. RESOURCES

- Grafton-Cardwell, E. E. and M. P. Daugherty. 2013. Asian citrus psyllid and huanglongbing disease. Pest Notes Publication 74155. University of California, Division of Agriculture and Natural Resources Publication 8205. 5 pp.  
<http://www.ipm.ucdavis.edu/PDF/PESTNOTES/pnasiancitruspsyllid.pdf>.
- Grafton-Cardwell, E. E., J. G. Morse, N. V. O'Connell, P. A. Phillips, C. E. Kallsen, and D. R. Haviland. 2013. UC IPM Management Guidelines: Citrus. Asian Citrus Psyllid. Pest Notes Publication 74155. University of California, Division of Agriculture and Natural Resources. <http://www.ipm.ucdavis.edu/PMG/r107304411.html>.

## PEST PROFILE

Common Name: Asian Citrus Psyllid

Scientific Name: *Diaphorina citri* Kuwayama

Order and Family: Hemiptera, Psyllidae

Description: The Asian citrus psyllid (ACP) is 3 to 4 millimeters long with a brown mottled body. The head is light brown. The wings are broadest in the apical half, mottled, and with a dark brown band extending around the periphery of the outer half of the wing. The insect is covered with a whitish waxy secretion, making it appear dusty. Nymphs are generally yellowish orange in color, with large filaments confined to an apical plate of the abdomen. The eggs are approximately 0.3 millimeters long, elongated, and almond-shaped. Fresh eggs are pale in color, then, turn yellow, and finally orange at the time of hatching. Eggs are placed on plant tissue with the long axis vertical to the surface of the plant.

History: Asian citrus psyllid was first found in the United States in Palm Beach County, Florida, in June 1998 in backyard plantings of orange jasmine. By 2001, it had spread to 31 counties in Florida, with much of the spread due to movement of infested nursery plants. In the spring of 2001, Asian citrus psyllid was accidentally introduced into the Rio Grande Valley, Texas on potted nursery stock from Florida. It was subsequently found in Hawaii in 2006, in Alabama, Georgia, Louisiana, Mississippi, and South Carolina in 2008. ACP was first found in California on August 27, 2008 in San Diego County. Subsequent to this initial detection in San Diego County, the ACP has been detected in Fresno, Imperial, Kern, Los Angeles, Orange, Riverside, San Bernardino, San Luis Obispo, Santa Barbara, Tulare, Ventura, Marin, Monterey, San Francisco, and Santa Clara counties. The ACP has the potential to establish itself throughout California wherever citrus is grown.

Distribution: ACP is found in tropical and subtropical Asia, Afghanistan, Saudi Arabia, Reunion, Mauritius, parts of South and Central America, Mexico, the Caribbean, and in the U.S. (Alabama, Arizona, California, Florida, Georgia, Hawaii, Louisiana, Mississippi, South Carolina, and Texas).

Life Cycle: Eggs are laid on tips of growing shoots; on and between unfurling leaves. Females may lay more than 800 eggs during their lives. Nymphs pass through five instars. The total life cycle requires from 15 to 47 days, depending on environmental factors such as temperature and season. The adults may live for several months. There is no diapause, but populations are low in the winter or during dry periods. There are nine to ten generations a year, with up to 16 noted under observation in field cages.

Hosts and Economic Importance: ACP feeds mainly on *Citrus* spp., at least two species of *Murraya*, and at least three other genera, all in the family Rutaceae. Damage from the psyllids occurs in two ways: the first by drawing out of large amounts of sap from the plant as they feed and, secondly, the psyllids produce copious amounts of honeydew. The honeydew then coats the leaves of the tree, encouraging sooty mold to grow which blocks sunlight to the leaves. However, the most serious damage caused by ACP is due to its ability to effectively vector three phloem-inhabiting bacteria in the genus *Candidatus Liberibacter*, the most widespread being *Candidatus Liberibacter asiaticus*. These bacteria cause a disease known as huanglongbing, or citrus greening. In the past, these bacteria have been extremely difficult to detect and

characterize. In recent years, however, DNA probes, electron microscopy, and enzyme-linked immunosorbent assay tests (ELISA) have been developed that have improved detection. Symptoms of huanglongbing include yellow shoots, with mottling and chlorosis of the leaves. The juice of the infected fruit has a bitter taste. Fruit does not color properly, hence the term "greening" is sometimes used in reference to the disease. Huanglongbing is one of the most devastating diseases of citrus in the world. Once infected, there is no cure for disease and infected trees will die within ten years. The once flourishing citrus industry in India is slowly being wiped out by dieback. This dieback has multiple causes, but the major reason is due to HLB.

### Host List

#### **SCIENTIFIC NAME**

*Aegle marmelos*  
*Aeglopsis chevalieri*  
*Afraegle gabonensis*  
*Afraegle paniculata*  
*Amyris madrensis*  
*Atalantia monophylla*  
*Atalantia* spp.  
*Balsamocitrus dawei*  
*Bergia* (=Murraya) *koenigii*  
*Calodendrum capense*  
*X Citroncirus webberi*  
*Choisya arizonica*  
*Choisya ternate*  
*Citropsis articulata*  
*Citropsis gilletiana*  
*Citropsis schweinfurthii*  
*Citrus aurantiifolia*  
  
*Citrus aurantium*  
  
*Citrus hystrix*  
*Citrus jambhiri*  
*Citrus limon*  
*Citrus madurensis*  
 (=X *Citrofortunella microcarpa*)  
*Citrus maxima*  
*Citrus medica*  
*Citrus meyeri*  
*Citrus × nobilis*  
*Citrus × paradisi*  
*Citrus reticulata*  
*Citrus sinensis*  
*Citrus* spp.  
*Clausena anisum-olens*  
*Clausena excavata*  
*Clausena indica*  
*Clausena lansium*

#### **COMMON NAMES**

bael, Bengal quince, golden apple, bela, milva  
 Chevalier's aeglopsis  
 Gabon powder-flask  
 Nigerian powder-flask  
 mountain torchwood  
 Indian atalantia  
  
 Uganda powder-flask  
 curry leaf  
 Cape chestnut  
  
 Arizonia orange  
 Mexican or mock orange  
 Katimboro, Muboro, West African cherry orange  
 cherry-orange  
 African cherry-orange  
 lime, Key lime, Persian lime, lima, limón agrio, limón ceuti,  
 lima mejicana, limero  
 sour orange, Seville orange, bigarde, marmalade orange,  
 naranja agria, naranja amarga  
 Mauritius papeda, Kaffir lime  
 rough lemon, jambhiri-orange, limón rugoso, rugoso  
 lemon, limón, limonero  
 calamondin  
  
 pummelo, pomelo, shaddock, pompelmous, toronja  
 citron, cidra, cidro, toronja  
 Meyer lemon, dwarf lemon  
 king mandarin, tangor, Florida orange, King-of-Siam  
 grapefruit, pomelo, toronja  
 mandarin, tangerine, mandarina  
 sweet orange, orange, naranja, naranja dulce  
  
 anis  
 clausena  
 clausena  
 wampi, wampee

<i>Clymenia polyandra</i>	a-mulis
<i>Eremocitrus glauca</i>	Australian desert lime
<i>Eremocitrus hybrid</i>	
<i>Esenbeckia berlandieri</i>	Berlandier's jopoy
<i>Fortunella crassifolia</i>	Meiwa kumquat
<i>Fortunella margarita</i>	Nagami kumquat, oval kumquat
<i>Fortunella polyandra</i>	Malayan kumquat
<i>Fortunella spp.</i>	
<i>Limonia acidissima</i>	Indian wood apple
<i>Merrillia caloxylon</i>	flowering merrillia
<i>Microcitrus australasica</i>	finger-lime
<i>Microcitrus australis</i>	Australian round-lime
<i>Microcitrus papuana</i>	desert-lime
<i>X Microcitronella spp.</i>	
<i>Murraya spp.</i>	curry leaf, orange-jasmine, Chinese-box, naranjo jazmín
<i>Naringi crenulata</i>	naringi
<i>Pamburus missionis</i>	
<i>Poncirus trifoliata</i>	trifoliolate orange, naranjo trébol
<i>Severinia buxifolia</i>	Chinese box-orange
<i>Swinglea glutinosa</i>	tabog
<i>Tetradium ruticarpum</i>	evodia, wu zhu yu
<i>Toddalia asiatica</i>	orange climber
<i>Triphasia trifolia</i>	trifoliolate limeberry, triphasia
<i>Vepris (=Toddalia) lanceolata</i>	white ironwood
<i>Zanthoxylum fagara</i>	wild lime, lime prickly-ash





 **United States Department of Agriculture**  
Animal and Plant Health Inspection Service

 **United States Department of Agriculture**  
Agricultural Research Service

## **Briefing Paper: Recent changes in the ACP/HLB invasion in California and implications for regional quarantines**

**Date: 11/22/2017**

*Neil McRoberts, Carla Thomas, Brianna McGuire*

Quantitative Biology & Epidemiology Lab, Plant Pathology Department, UC Davis, CA 95616

*Beth Grafton Cardwell*

Department of Entomology, UC Riverside & UC Lindcove Research and Extension Center, Exeter, CA 93221

*David Bartels*

USDA-APHIS-PPQ, Field Operations – Data Analysis, Risk, and Targeting, 2150 Centre Ave., Bldg B., 3E14, Fort Collins, CO 80526

*Tim Gottwald*

USDA-ARS, U.S. Horticultural Research Laboratory, 2001 S. Rock Road, Fort Pierce, FL 34945

### **State-wide background risk level for HLB**

Since 2012, a background risk level for HLB in both residential and commercial citrus in each square mile of interest has been calculated 2-3 times per year using a risk model developed in Florida and adapted for use in California (Gottwald et al., 2014). The model uses a range of risk variables including census data, topography, land use, and known incidence of both HLB and Asian Citrus Psyllid (ACP) to produce a risk value ranging from 0 (extremely low risk) to 1 (very high risk) that applies to each square mile. Figure 1 shows the current risk status across the state at a county level, where the risk level applied to the county is the highest value for any individual square mile within that county

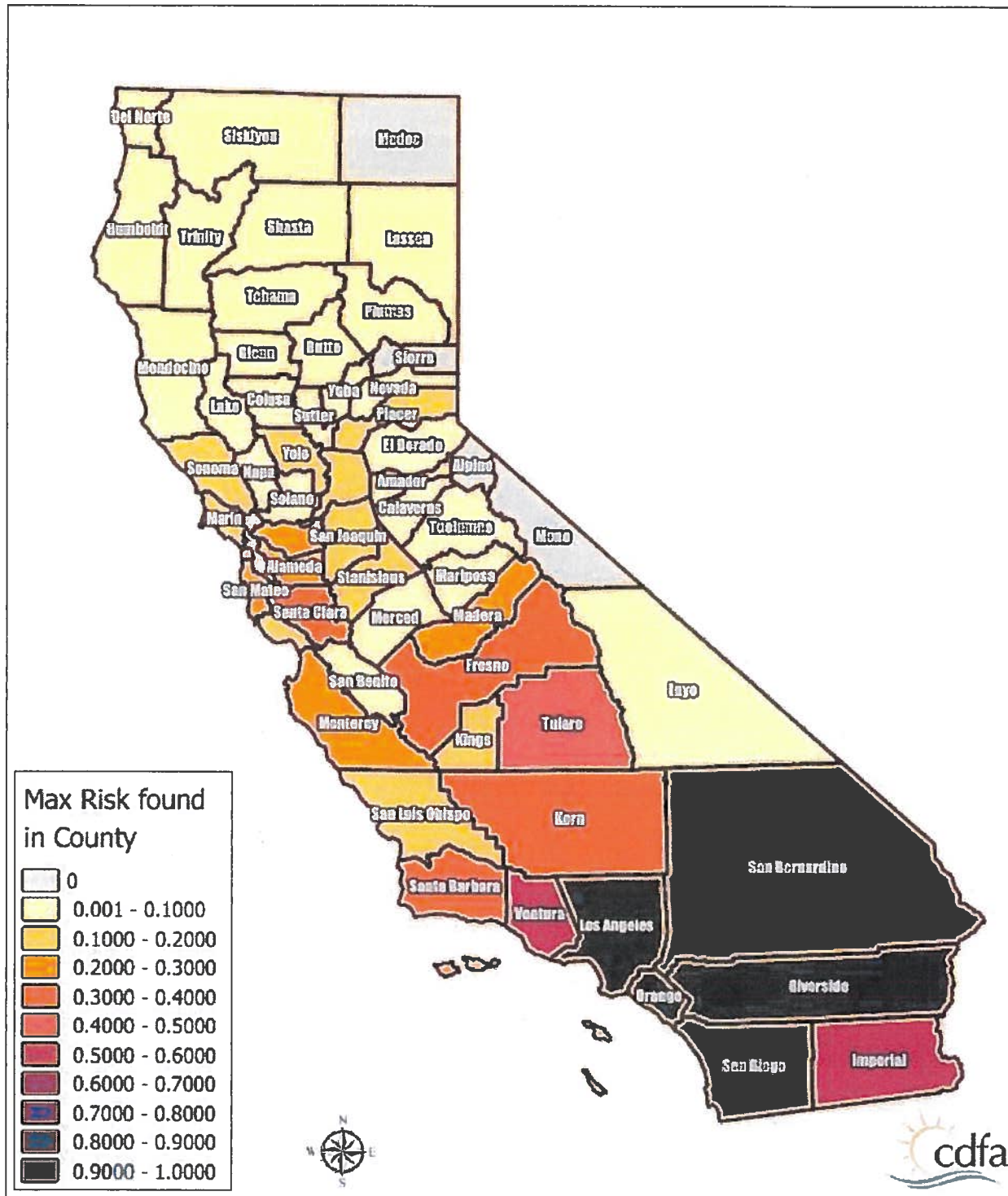
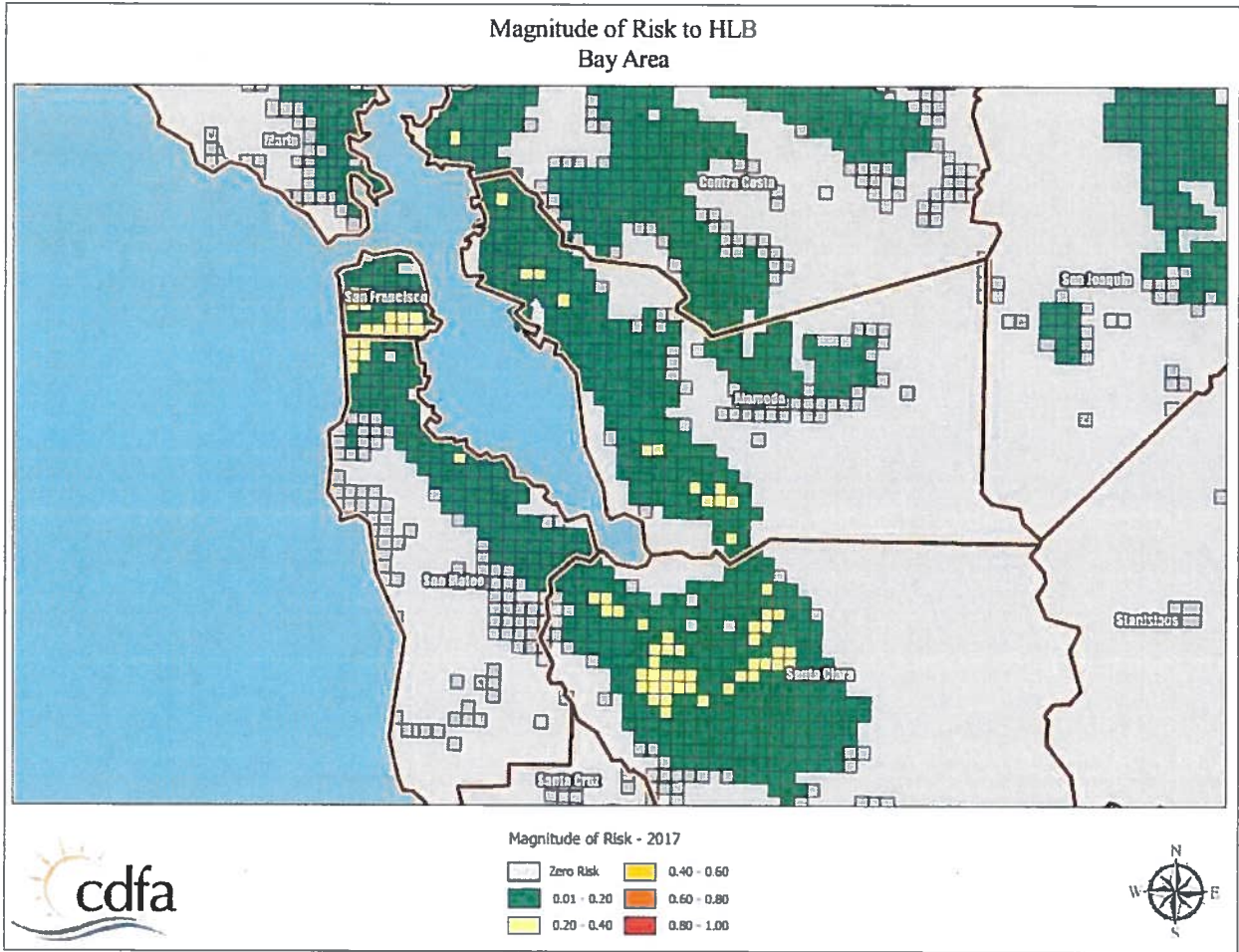


Figure 1. Maximum HLB risk level by county across California as estimated by the USDA-ARS HLB risk model.

In Figure 1 note that the risk level is generally higher in the south than north, because of the known presence of HLB and large ACP population in the southern counties. Note also that in northern California even counties with only a few ACP detections – for example Santa Clara County – may still have

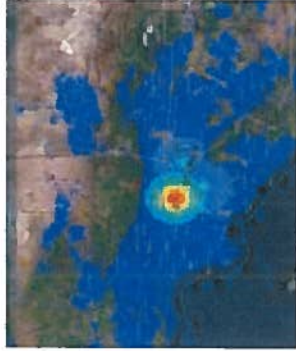
relatively high risk levels because of population census data that indicate the background risk of the presence of infected citrus in private yards is relatively high. To illustrate this point further, Figure 2 shows the San Francisco Bay Area in more detail.



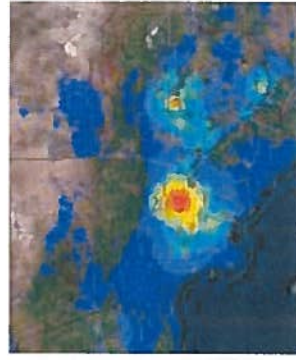
**Figure 2. Individual square mile HLB risk levels for the San Francisco Bay Area. Note that the general risk level is low, but there are pockets of moderately high risk in San Francisco itself, and more noticeably in San Jose, associated with population census risk factors; ACP detections in this area is still low and sporadic.**

While the background risk of HLB is strongly dependent on factors which are either static (e.g. topography) or change only slowly (e.g. human socio-economic factors) the presence of the ACP vector of the pathogen introduces a large dynamic component into the risk level across the state. To illustrate the impact of the vector population on changing risk status for HLB Figure 3 shows changes in HLB risk for the proposed quarantine areas 5 (San Diego, Imperial and Eastern Riverside) and 6 (LA, Western Riverside, San Bernardino and Orange). The risk level is shown as a blue-to-red heat map with higher risk indicated by darker red color and lower risk indicated by darker blue color; a time series of six periods is shown for each area.

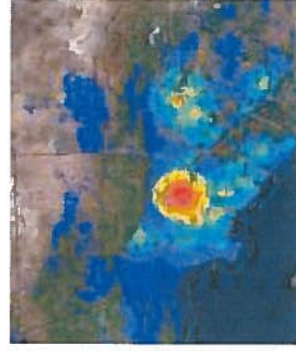
Zone 6, 2012-13



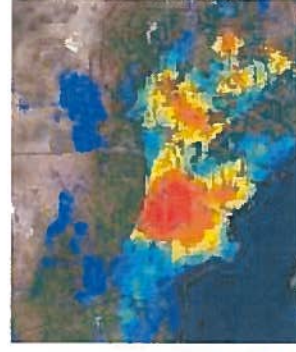
Zone 6, 2013-14



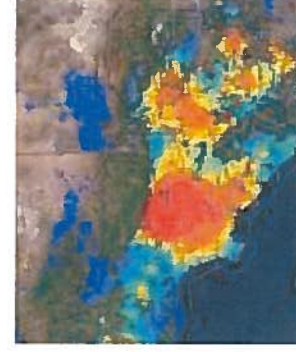
Zone 6, 2014-15



Zone 6, 2015-16



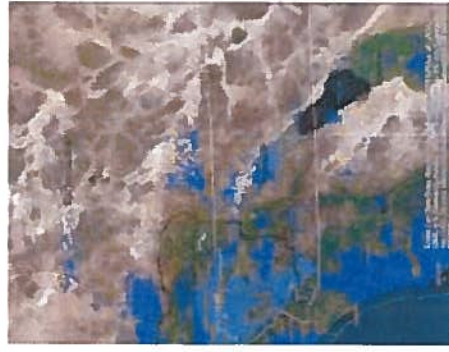
Zone 6, 2016-17



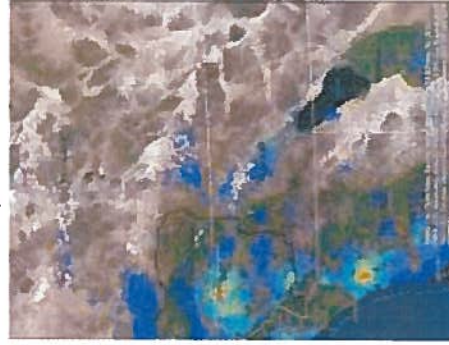
Zone 5, 2012-13



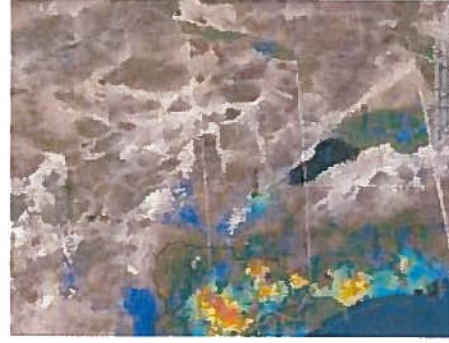
Zone 5, 2013-14



Zone 5, 2014-15



Zone 5, 2015-16



Zone 5, 2016-17



Figure 3. Changes in background risk of HLB in proposed quarantine areas 5 and 6 from 2012 to present. Red color indicates high risk, blue indicates low risk. Note that the location of the early HLB detections in Hacienda Heights and San Gabriel falls inside the single high-risk area predicted in 2012. The progressive increase in risk in both areas is apparent with the passage of time. All known cases of HLB are in proposed Quarantine Area 6.

Figure 3 tells us at least two useful things about HLB risk. First, note that in 2012-13 the only area of predicted high risk was centered on Hacienda Heights and San Gabriel, the locations of the first HLB discoveries in California; in other words, the risk model correctly anticipated the presence of HLB. Also note that the model also highlighted the focus of high risk in the city of Riverside as early as 2013-14; this outbreak emerged in 2017. These results are important for interpreting the presence of areas of elevated risk in places such as San Jose. Second, the pattern of change in risk in both areas 5 and 6 is a steady increase, spreading out from the original high risk area in LA, but also with additional foci developing at locations quite distant from the original focus. These changes are associated mainly with the spread of ACP through the region and the patterns of population density of the insect recorded in the risk-based surveys.

Taken together the results presented in this section highlight two important aspects of HLB risk that are relevant to quarantine regulations:

1. Because HLB-affected citrus plant material can be propagated and spread by human activity, the risk of HLB and ACP are to some extent independent, particularly in areas that are not generally infested with ACP.
2. **The risk of HLB can exist before the arrival of the vector** in an area because HLB-affected plant material is often brought to an area by human activities.

After ACP infests an area with pre-existing infected trees present, the vector population eventually comes into contact with the infected trees and foci of disease begin to build around them. This is because ACP acquires the pathogen from the infected trees and establishes a recurring cycle of infection and acquisition. Because trees remain asymptomatic for a long period of time, spread in the absence of detection and tree removal can occur.

### **Reducing disease spread by quarantines**

The basic principle of underlying the use of quarantines is to restrict the spread of disease by sub-dividing an area into smaller regions and limiting the opportunities for disease to spread from one region to another. In the case of invasive and highly mobile diseases, quarantines should be applied early and rigorously to have the largest effect on disease spread. Importantly, quarantines do not have to be 100% effective to be worth imposing. If the incursion of the disease into generally uninfected areas can be limited to a low rate, and psyllid populations can be kept low, local eradications can be achieved when new incursions are detected.

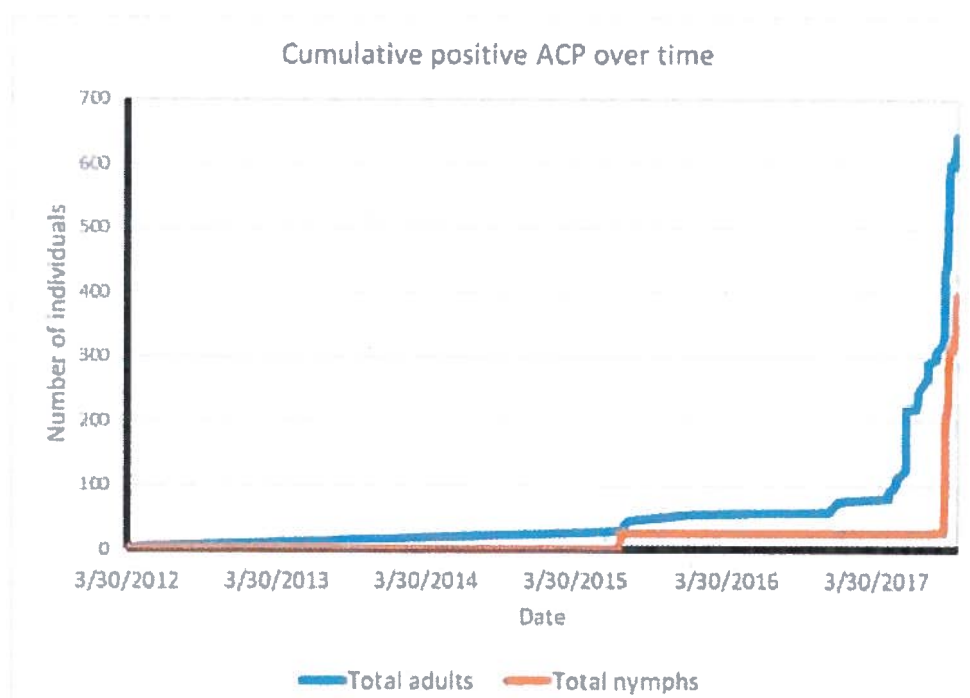
The basic idea of setting up quarantine regions within the state is an ecological analogue of the idea of constructing a ship using multiple watertight compartments; even if one compartment is flooded, as long as the flow of water is negligible to the other compartments the ship won't sink. In instituting a quarantine policy, the aim is to limit the flow of vectors and disease throughout the state and thus safeguard the industry and homeowners as a whole.

## Recent changes in the dynamics of HLB/ACP detections

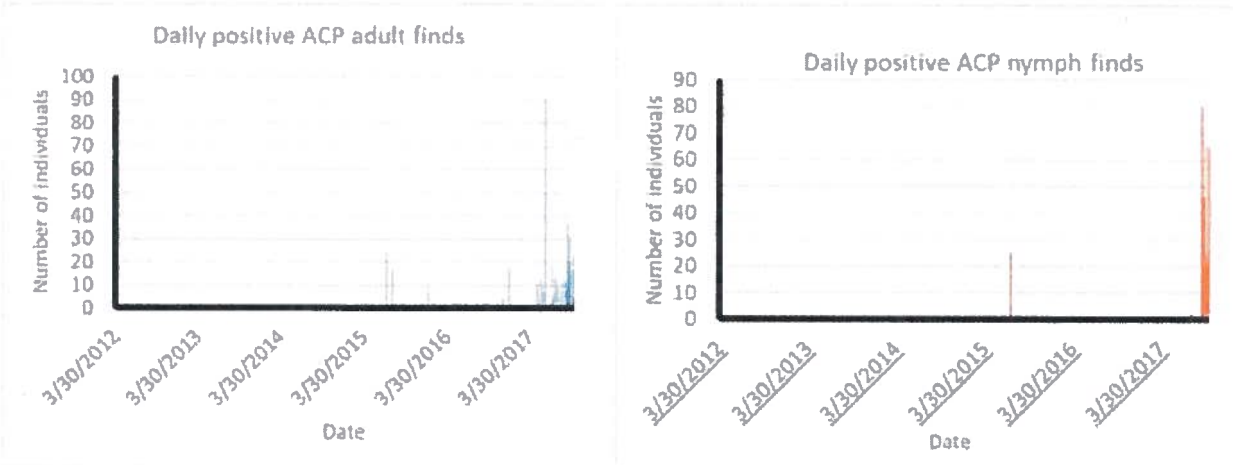
Until recently, the rate of accumulation of new positive ACP and tree detections had been relatively stable. Over the last 6 months there has been a dramatic increase in the rate of new detections of HLB infections in both ACP and citrus trees. In addition, there has been a recent increase in the number of cities in which positive finds have been reported and a sharp increase in the number of ACP nymph detections. These results are summarized in Figures 4 through 7.

Taken together the results indicate an exponential increase in the intensity of the HLB epidemic at multiple scales. The pathogen is becoming more prevalent in the vector population and in the tree population. At the same time, the upswing in nymphal detections indicates that the transmission rate is increasing and the increase in the number of cities with positive detections indicates that the geographic extent of the epidemic is increasing rapidly.

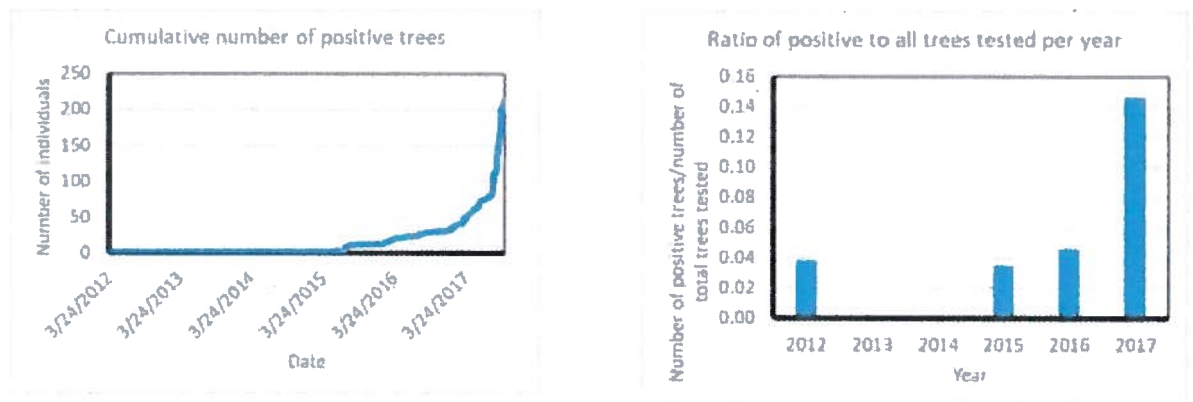
Most of these changes have become apparent only in the last 6 months. Given the very sharp increase in the intensity of the epidemic, a rapid response is needed to implement additional measures to slow the rate of spread of HLB beyond its current range before the opportunity is lost.



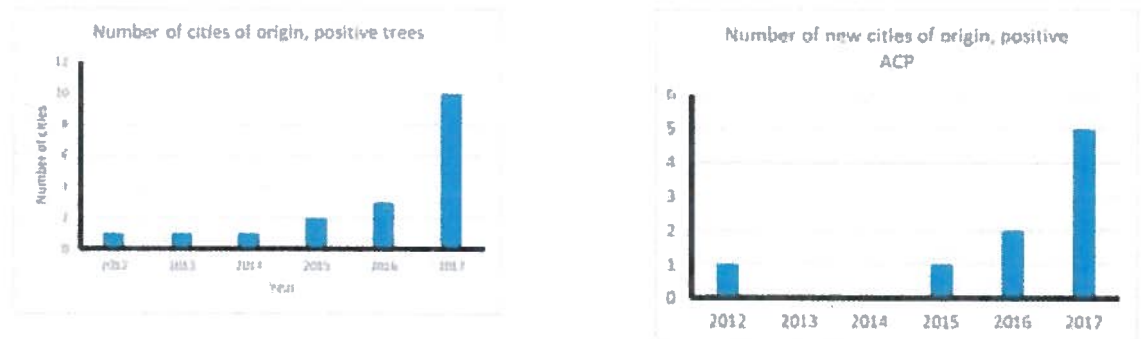
**Figure 4: Cumulative counts of PCR-positive ACP samples collected in California over time since 2012. Note the sharp increase in the rate of accumulation from mid-2017 onwards.**



**Figure 5: Daily discovery rate for PCR-positive ACP (adults and nymphs are shown separately). Note the sharp increase in finds toward the end of 2017, particularly for nymphs which had largely been absent from positive samples until recent detections.**



**Figure 6: PCR-positive tree detections over time. In the left panel the cumulative number of detections is shown, highlighting the exponential increase in 2017. In the right panel the ratio of positive trees to all trees tested per year is shown. Note that until 2017 the ratio had been more or less stable at approximately 5%, but has nearly tripled in 2017 to just under 15%.**



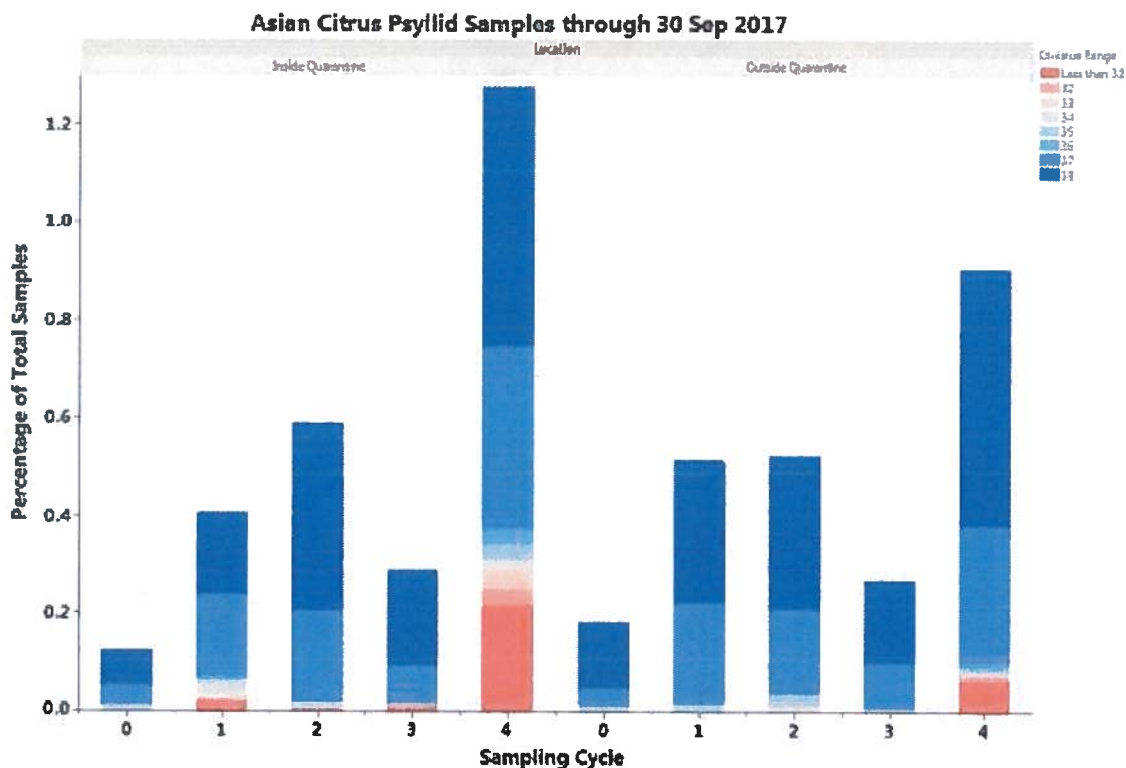
**Figure 7: Numbers of cities with PCR-positive ACP detections over time. The left panel shows the cumulative figure, the right panel shows the number of new cities per year. Mirroring the results for trees and for ACP, note the sharp increase in 2017. These results indicate that the epidemic is intensifying across several spatial scales at a very high rate.**

## Changes in diagnostic results on tested Asian Citrus Psyllids

The previous section detailed the recent sharp increases in PCR detections for ACP and trees. These increases indicate that the pathogen population is growing and this can be seen directly by considering the Ct values in qPCR tests. Results highlighting the increase in the pathogen population are shown here in Figures 8 and 9.

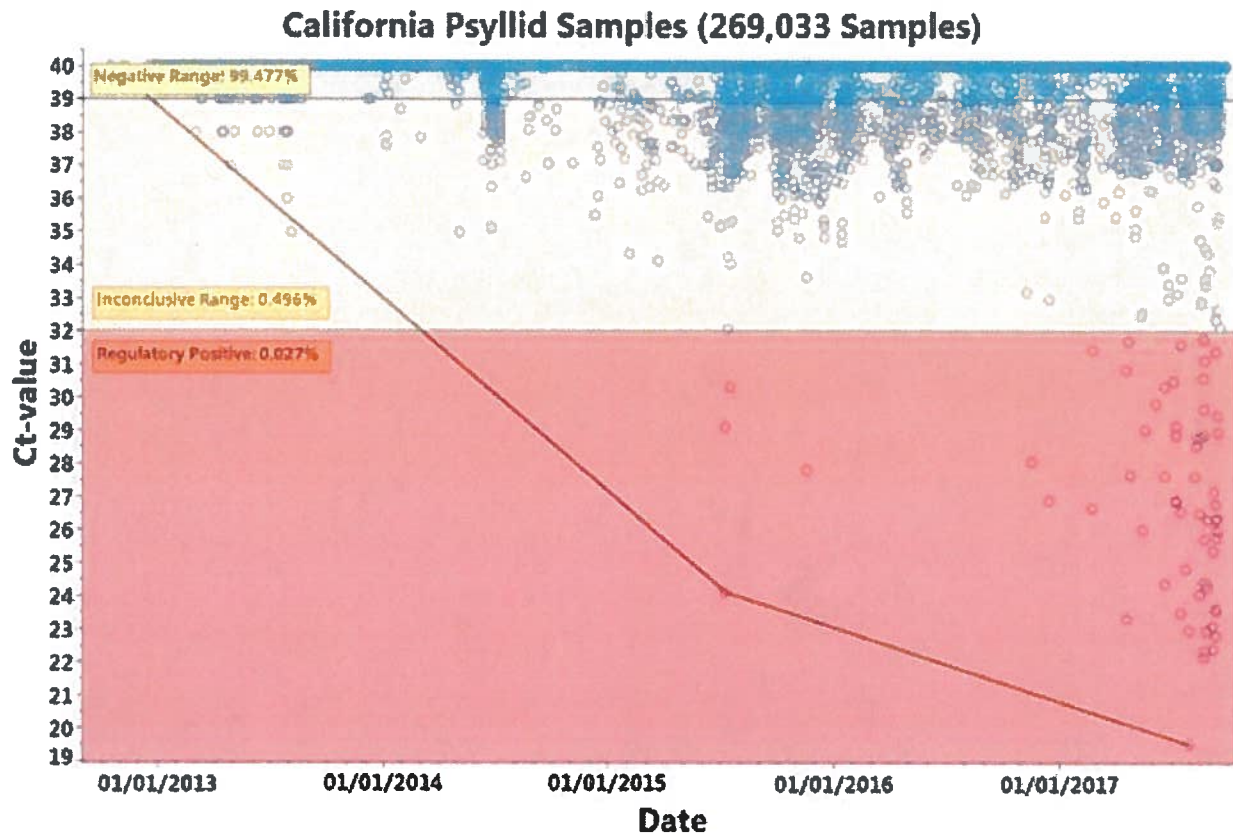
Figure 8 shows the data for qPCR Ct values obtained from psyllid samples collected in different sampling cycles of the survey program. The data are sub-divided into samples obtained from inside and outside the existing HLB quarantine areas. It can be seen that the Ct values obtained from ACP samples inside the quarantine areas are showing a much faster increase in the proportion of low values (CT <32 to 33), indicating an intensification of the pathogen population in the vector population.

The presence of some ACP with low qPCR Ct values outside the existing quarantine areas highlights the risk of ACP moving the disease around and the need for quarantine regulations that apply at a larger scale than the current radius around confirmed HLB-positive trees.



**Figure 8:** qPCR test results on ACP samples tested by CDFA through 30 September 2017. Note that the proportion of light blue and red (indicating presence of the HLB pathogen) in the samples from inside the quarantine areas (left panel) has increased over time, whereas no corresponding change is apparent in samples outside the quarantine areas (right panel).





**Figure 9: qPCR regulatory results recorded since the detection of HLB in California over time compared to the concentration of the pathogen in the sample (Ct < 32.1= HLB positive (red zone), Ct 32.1-38.9 = suspect (yellow zone), Ct > 38.9=HLB not detected (green zone)). The lower the Ct value, the higher the concentration of the HLB bacterium. Note the trend towards lower Ct values over time and the increase in numbers of HLB positive psyllids starting in 2015 and continuing through 2017 indicating that the titre (concentration) of HLB DNA in the psyllids is increasing.**

### **Implications of changes in the dynamics and recommendations**

To summarize the recent changes in the dynamics of HLB/ACP detections in trees and psyllids:

1. The number of HLB positive citrus trees detected has increased exponentially in the last 4 months as compared to the previous 6 years.
2. The number of HLB positive and infectious Asian citrus psyllids has increased exponentially in the last four months as compared to the previous 6 years.
3. These HLB infectious psyllids are spreading to new communities in the LA basin at a significantly escalated rate compared to the previous 6 years.
4. These infectious psyllids can be spread by movement of ACP-host nursery stock, bulk citrus, and other possible carriers of ACP.

Given the above developments in the California HLB epidemic it is of the utmost urgency to further compartmentalize the state using quarantine zones defined by HLB risk to commercial citrus (rather than 5 mile and county wide quarantines). This will help to reduce the potential for spread of HLB to zones where HLB has not been detected in citrus trees, nor has Asian citrus psyllid become established in some cases. The proposal to divide the state into 7 zones for bulk citrus movement and three zones for nursery stock, will serve to restrict the dispersal of HLB and its ACP vectors. Currently all known HLB infected trees are inside a single quarantine zone – zone 6. However, with the exponential escalation of the number of infected ACP and citrus trees requires an immediate regulatory response to restrict spread before the opportunity for such measures to be effective is lost.



October 28, 2021

Scott C. Stiles – City Manager  
City of Garden Grove  
11222 Acacia Parkway  
Garden Grove, CA 92842

**Re: City of Garden Grove – 3<sup>rd</sup> Quarter 2021 Compliance Report**

Dear Mr. Stiles:

Enclosed is the 3<sup>rd</sup> Quarter 2021 Compliance Report for the City of Garden Grove.

During the 3<sup>rd</sup> Quarter 2021, Care Ambulance transported 2,354 emergency ambulance patients, in the City of Garden Grove.

Our emergency (Code 3) compliance rate was at 96.5% and our urgent (Code 2) compliance rate was at 95.1%. Our contract compliance standard is 90% for both Code 2 and Code 3 responses. We are pleased to report that we have exceeded that standard in the quarter.

Enclosed, please find a copy check for the sum of \$ 42,725.10. This represents Care's reimbursement to the Orange County Fire Authority (OCFA) for disposable medical supplies. Previously, the supply reimbursement was paid to the City of Garden Grove but with your new contract, we received notification of this change.

Should you have any questions or concerns, please feel free to contact me at (714) 288-3823.

Sincerely,

A handwritten signature in blue ink, appearing to read "Bill Weston", is written over a blue horizontal line.

Bill Weston  
Director of Operations



*"Family Owned and Operated since 1969"*

**CARE AMBULANCE SERVICE**  
**Quarterly Report for the 3rd Quarter of 2021**  
**City of Garden Grove**

Reporting Period	<u>Jul</u>	<u>Aug</u>	<u>Sep</u>	<u>Quarterly Total</u>
Total # of Code 3 Responses	160	183	144	487
Total # of Code 3 Responses Within 10 Minutes	153	178	139	470
% of Code 3 Requests Within 10 Minutes	<b>95.6%</b>	<b>97.3%</b>	<b>96.5%</b>	<b>96.5%</b>
Total # of Code 2 Responses	926	898	969	2793
Total # of Code 2 Responses Within 15 Minutes	884	850	921	2655
% of Code 2 Requests Within 15 Minutes	<b>95.5%</b>	<b>94.7%</b>	<b>95.0%</b>	<b>95.1%</b>
Total # of Responses	1086	1081	1113	3280
Total # of Responses Within Compliance	1037	1028	1060	3125
% of Requests Within Compliance	<b>95.5%</b>	<b>95.1%</b>	<b>95.2%</b>	<b>95.3%</b>
Total Number of Patients Transported	787	773	794	2354
Total Number of Calls Cancelled Without Transport	299	308	319	926
Total Number of Unaccepted Requests	0	0	0	0
Total Number of Calls Referred to Mutual Aid Providers	0	0	0	0

Contract Exceptions for this Quarter? NO

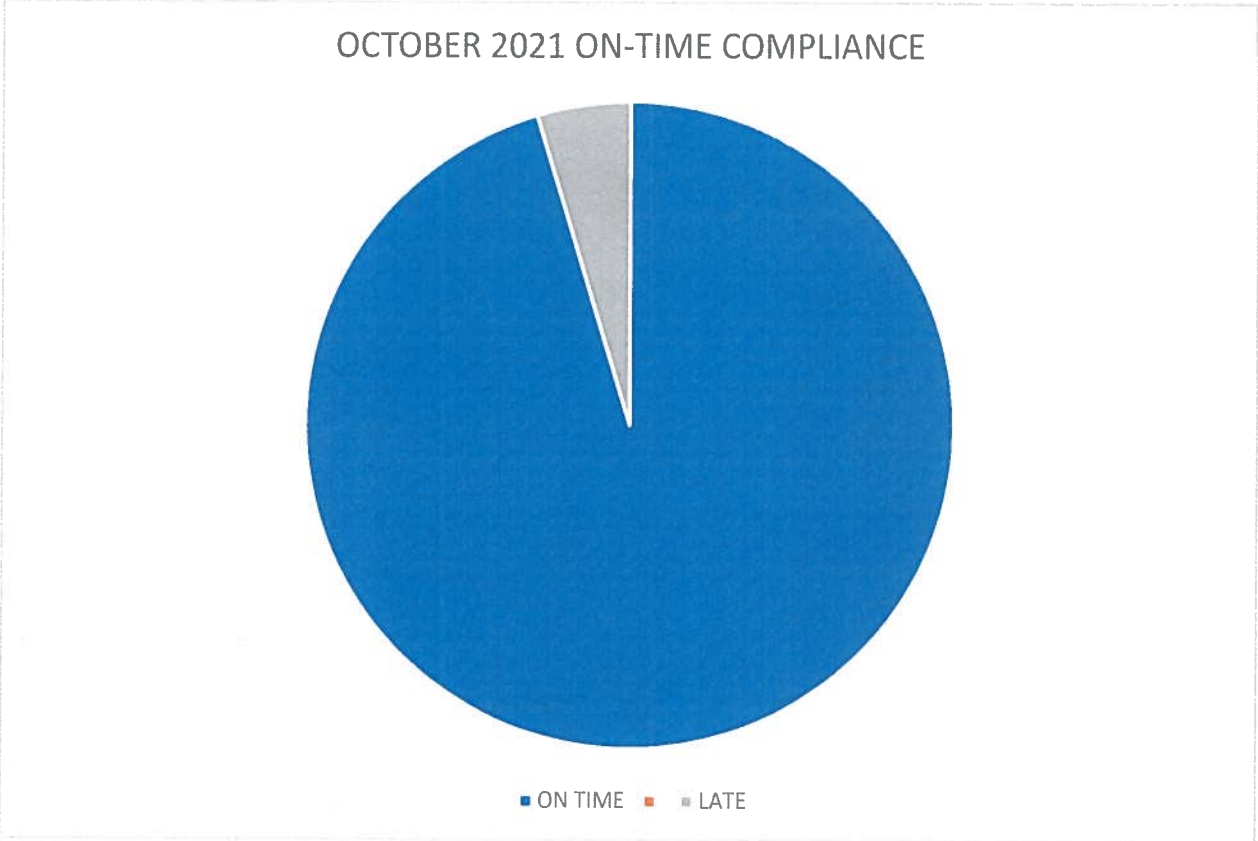
Submitted by:  10/8/2021  
 Director of Operations

Quarterly Medical Supply Reimbursement \$ 42,725.10

# GARDEN GROVE

## October 2021 Compliance Report

<b>CODE 2</b>	
<b>RESPONSES</b>	<b>1014</b>
<b>ON TIME</b>	<b>965</b>
<b>LATE</b>	<b>49</b>
<b>CODE 3</b>	
<b>RESPONSES</b>	<b>143</b>
<b>ON TIME</b>	<b>138</b>
<b>LATE</b>	<b>5</b>
<b>TOTALS</b>	
<b>RESPONSES</b>	<b>1157</b>
<b>ON TIME</b>	<b>1103</b>
<b>LATE</b>	<b>54</b>
<b>PERCENTAGE</b>	<b>95.33%</b>



**AVERAGE RESPONSE TIME: 9:14**

**AVERAGE LATE TIME: 2:57**

**WEEKLY MEMO 11-4-2021**

# **SOCIAL MEDIA HIGHLIGHTS**



## Post Performance

October 28, 2021 - November 3, 2021

Review the lifetime performance of the posts you published during the publishing period.

**Included in this Report**

 @CityGardenGrove

 Garden Grove City Hall

 gardengrovecityhall

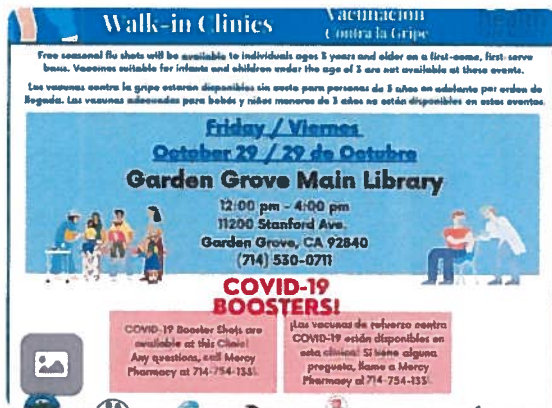




**Garden Grove City Hall**

Thu 10/28/2021 8:48 am PDT

While the pandemic is not over, the risk of having both COVID-19 and the flu could put a strain on you and your loved ones. ❤️



Impressions	1,913
Reach	1,852
Engagements	33
Engagement Rate (per Impressi...	1.7%



**@CityGardenGrove**

Thu 10/28/2021 8:52 am PDT

While the pandemic is not over, the risk of having both COVID-19 & the flu could put a strain on you & your loved ones ❤️ On Fri...



Impressions	359
Potential Reach	4,422
Engagements	16
Engagement Rate (per Impressi...	4.5%



**Garden Grove City Hall**

Thu 10/28/2021 3:27 pm PDT

☀️ One of the greatest gifts you can give is your time. The City's H. Louis Lake Senior Center and Meals on Wheels OC are...



Impressions	3,549
Reach	3,324
Engagements	107
Engagement Rate (per Impressi...	3%



**gardengrovecityhall**

Thu 10/28/2021 4:04 pm PDT

☀️ One of the greatest gifts you can give is your time. The City's H. Louis Lake Senior Center and Meals on Wheels OC are...



Impressions	<b>1,313</b>
Reach	<b>1,049</b>
Engagements	<b>43</b>
Engagement Rate (per Impressi...	<b>3.3%</b>



**Garden Grove City Hall**

Fri 10/29/2021 8:42 am PDT

This spooky season, let's walk towards wellness. 🎃 Don't forget to join us at the annual Trek 'n' Treat Wellness Day event...



Impressions	<b>684</b>
Reach	<b>662</b>
Engagements	<b>10</b>
Engagement Rate (per Impression)	<b>1.5%</b>



**@CityGardenGrove**

Fri 10/29/2021 8:44 am PDT

This spooky season, let's walk towards wellness. 🎃 Don't forget to join us at the annual Trek 'n' Treat Wellness Day event...



Impressions	<b>265</b>
Potential Reach	<b>4,422</b>
Engagements	<b>12</b>
Engagement Rate (per Impressi...	<b>4.5%</b>



**Garden Grove City Hall**

Fri 10/29/2021 12:23 pm PDT

🎃👤 Prepare for the Halloween weekend with some health and safety tips! The following recommendations are from...



Impressions	<b>801</b>
Reach	<b>785</b>
Engagements	<b>5</b>
Engagement Rate (per Impression)	<b>0.6%</b>



**@CityGardenGrove**

Fri 10/29/2021 12:30 pm PDT

🎃👤 Prepare for the Halloween weekend with some health/safety tips! Ohealth recommends that if you're planning to...



Impressions	<b>247</b>
Potential Reach	<b>4,422</b>
Engagements	<b>5</b>
Engagement Rate (per Impression)	<b>2%</b>



**Garden Grove City Hall**

Sun 10/31/2021 8:42 am PDT

🎃 Happy Halloween! To all spooky ghosts and ghouls who plan to haunt the streets, searching for candy and treats, please...

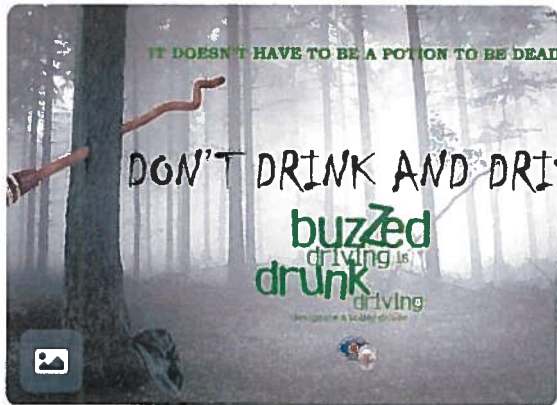


Impressions	<b>1,404</b>
Reach	<b>1,388</b>
Engagements	<b>32</b>
Engagement Rate (per Impression)	<b>2.3%</b>



**@CityGardenGrove**  
Sun 10/31/2021 8:48 am PDT

Don't be a real monster this **#Halloween**. Celebrate responsibly by **#PlanningAhead** and designating a...

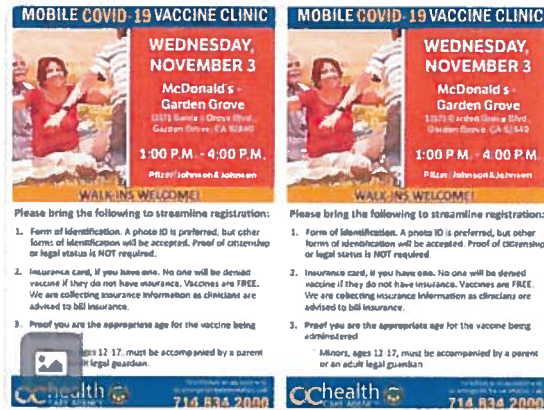


Impressions	1,426
Potential Reach	4,424
Engagements	14
Engagement Rate (per Impressi...	1%



**Garden Grove City Hall**  
Mon 11/1/2021 8:36 am PDT

The COVID-19 pandemic is not over yet. Let's continue to protect our loved ones. ❤️ The County of Orange will open a mobile...

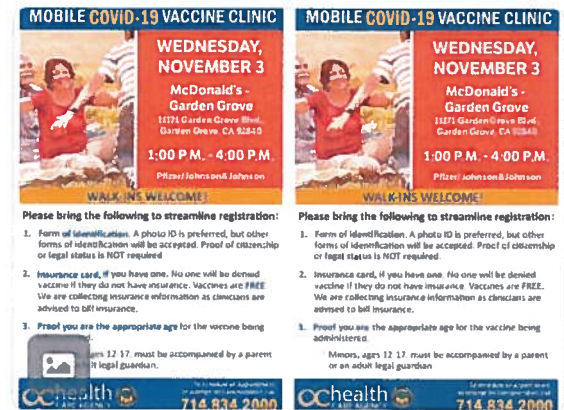


Impressions	623
Reach	605
Engagements	9
Engagement Rate (per Impression)	1.4%



**@CityGardenGrove**  
Mon 11/1/2021 8:38 am PDT

The COVID-19 pandemic is not over yet. Let's continue to protect our loved ones. ❤️ The OC will open a mobile COVID-19...



Impressions	195
Potential Reach	4,423
Engagements	5
Engagement Rate (per Impressi...	2.6%



**Garden Grove City Hall**

Mon 11/1/2021 12:08 pm PDT

WANTED: Boutique crafters and vendors **T**  
 ❄️ Don't forget that the City of Garden Grove is still looking for boutique...



Impressions	<b>7,210</b>
Reach	<b>6,810</b>
Engagements	<b>195</b>
Engagement Rate (per Impressi...	<b>2.7%</b>



**@CityGardenGrove**

Mon 11/1/2021 12:14 pm PDT

WANTED: Boutique crafters & vendors **T**  
 Don't forget that the City is still looking for boutique crafters/vendors for the Winter...



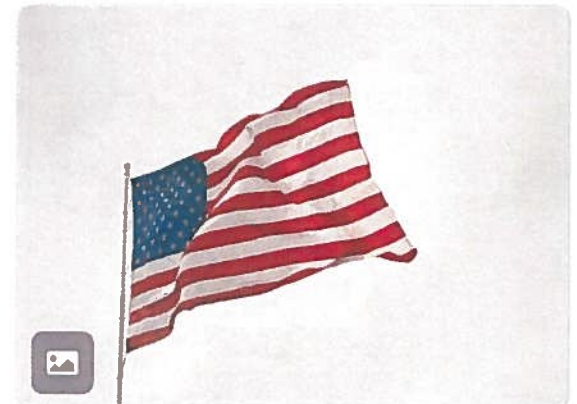
Impressions	<b>201</b>
Potential Reach	<b>4,423</b>
Engagements	<b>6</b>
Engagement Rate (per Impressi...	<b>3%</b>



**Garden Grove City Hall**

Tue 11/2/2021 9:02 am PDT

In observance of the Veterans Day holiday, Garden Grove City Hall will be closed on Thursday, November 11, 2021. 🇺🇸 For mo...

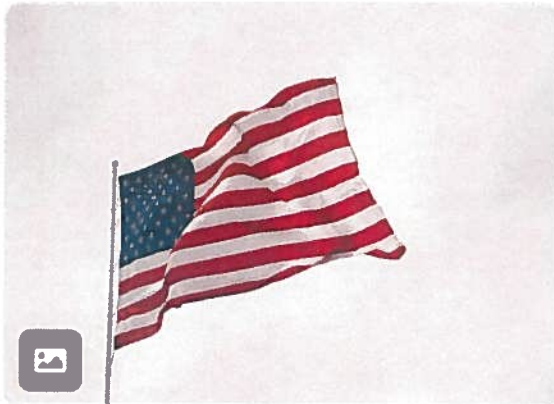


Impressions	<b>577</b>
Reach	<b>576</b>
Engagements	<b>7</b>
Engagement Rate (per Impression)	<b>1.2%</b>



**@CityGardenGrove**  
Tue 11/2/2021 9:02 am PDT

In observance of the Veterans Day holiday, Garden Grove City Hall will be closed on Thursday, November 11, 2021. 🇺🇸 For mo...



Impressions	<b>196</b>
Potential Reach	<b>4,424</b>
Engagements	<b>4</b>
Engagement Rate (per Impressi...	<b>2%</b>



**Garden Grove City Hall**  
Tue 11/2/2021 12:00 pm PDT

All veterans are important. Come join the celebration. Congressmen Lou Correa and Alan Lowenthal, in conjunction with the...



Impressions	<b>880</b>
Reach	<b>841</b>
Engagements	<b>19</b>
Engagement Rate (per Impression)	<b>2.2%</b>



**@CityGardenGrove**  
Tue 11/2/2021 12:44 pm PDT

All veterans are important. Come join the celebration. Congressmen Lou Correa & Alan Lowenthal, in conjunction with the...



Impressions	<b>196</b>
Potential Reach	<b>4,424</b>
Engagements	<b>10</b>
Engagement Rate (per Impressi...	<b>5.1%</b>



**Garden Grove City Hall**

Tue 11/2/2021 6:30 pm PDT

As we head into the giving season, we'd like to remember our blessings and #PayItForward. The Garden Grove Police...



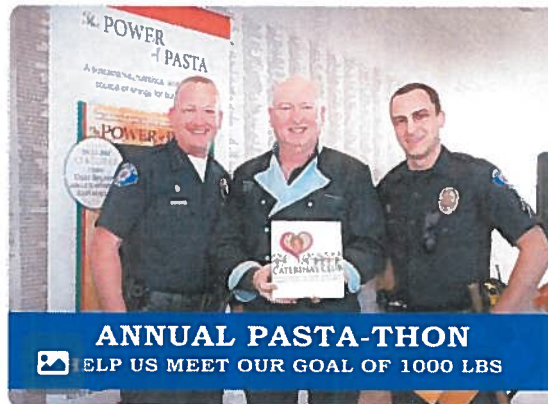
Impressions	593
Reach	583
Engagements	6
Engagement Rate (per Impression)	1%



**gardengrovecityhall**

Tue 11/2/2021 6:30 pm PDT

As we head into the giving season, we'd like to remember our blessings and #PayItForward. @gardengrovepd...



Impressions	669
Reach	623
Engagements	28
Engagement Rate (per Impression)	4.2%



**@CityGardenGrove**

Wed 11/3/2021 8:30 am PDT

Want to go #BiGG this Black Friday? ✨ From 11/26-12/16, you are encouraged to participate in the City's BiGG campaign....



Impressions	—
Potential Reach	4,423
Engagements	—
Engagement Rate (per Impression)	—

 **Garden Grove City Hall**  
Wed 11/3/2021 9:07 am PDT

It's time to clear the clutter! The City, in partnership with Republic Services, will host a series of community cleanup day...



Impressions	4,177
Reach	4,177
Engagements	274
Engagement Rate (per Impressi...	6.6%

 **gardengrovecityhall**  
Wed 11/3/2021 9:16 am PDT

It's time to clear the clutter! The City, in partnership with @republic\_services, will host a series of community cleanup day...



Impressions	1,615
Reach	1,507
Engagements	70
Engagement Rate (per Impressi...	4.3%

 **gardengrovecityhall**  
Wed 11/3/2021 9:26 am PDT



Impressions	944
Reach	898
Comments	3
Story Taps Back	16





**@CityGardenGrove**  
Wed 11/3/2021 9:30 am PDT

It's time to clear the clutter! The City is hosting a series of community cleanup days in an effort to help residents prope...



Impressions	126
Potential Reach	4,424
Engagements	13
Engagement Rate (per Impressi...	10.3%



**Garden Grove City Hall**  
Wed 11/3/2021 1:00 pm PDT

This Christmas, give the gift of play. The community is invited to participate in an end-of-year program designed to bring j...



Impressions	1,494
Reach	1,494
Engagements	48
Engagement Rate (per Impressi...	3.2%



**gardengrovecityhall**  
Wed 11/3/2021 1:00 pm PDT

This Christmas, give the gift of play. The community is invited to participate in an end-of-year program designed to bring j...



Impressions	772
Reach	707
Engagements	32
Engagement Rate (per Impression)	4.1%

 **@CityGardenGrove**  
Wed 11/3/2021 1:00 pm PDT

This holiday, give the gift of play. 🎁 From 11/1-12/10, the City's family resource centers are seeking donations of new...



Impressions	—
Potential Reach	<b>4,579</b>
Engagements	—
Engagement Rate (per Impressi...	—

 **@CityGardenGrove**  
Wed 11/3/2021 5:00 pm PDT

📺 Check out the 2021 November CityWorks for the latest news and events! Visit: [ggcity.org/cityworks](http://ggcity.org/cityworks) #gg1956...



Impressions	—
Potential Reach	<b>4,422</b>
Engagements	—
Engagement Rate (per Impressi...	—

 **Garden Grove City Hall**  
Wed 11/3/2021 5:00 pm PDT

📺 Check out the 2021 November CityWorks for the latest news and events! Visit: [ggcity.org/cityworks](http://ggcity.org/cityworks) #gg1956...



Impressions	<b>525</b>
Reach	<b>525</b>
Engagements	<b>12</b>
Engagement Rate (per Impression)	<b>2.3%</b>



## Post Performance

October 28, 2021 - November 3, 2021

Review the lifetime performance of the posts you published during the publishing period.

**Included in this Report**

 Garden Grove Police Department     ggpdk9unit



**ggpdk9unit**

Wed 11/3/2021 12:30 pm PDT

On Monday, November 1, at 11:10 PM, #GardenGrovePD officers responded the Post Office (10441 Stanford Ave.)...



Impressions	<b>1,238</b>
Reach	<b>1,202</b>
Engagements	<b>178</b>
Engagement Rate (per Impressi...	<b>14.4%</b>



**Garden Grove Police Depa...**

Wed 11/3/2021 12:00 pm PDT

On Monday, November 1, at 11:10 PM, #GardenGrovePD officers responded the Post Office (10441 Stanford Ave.)...



Impressions	<b>5,128</b>
Reach	<b>5,128</b>
Engagements	<b>825</b>
Engagement Rate (per Impressi...	<b>16.1%</b>



**Garden Grove Police Depa...**

Tue 11/2/2021 6:26 pm PDT

As we head into the giving season, we'd like to remember our blessings and #PayItForward. The Caterina's Club...



Impressions	<b>3,089</b>
Reach	<b>3,032</b>
Engagements	<b>158</b>
Engagement Rate (per Impressi...	<b>5.1%</b>



**Garden Grove Police Depa...**

Mon 11/1/2021 3:34 pm PDT



Impressions	—
Reach	—
Engagements	—
Engagement Rate (per Impression)	—



**Garden Grove Police Depa...**

Sun 10/31/2021 12:00 pm PDT

All Hallows' Eve is upon us. Here are some tips for a happy and safe holiday: •  
#BeSafeBeSeen - fasten reflective tapes...



Impressions	<b>5,573</b>
Reach	<b>5,573</b>
Engagements	<b>338</b>
Engagement Rate (per Impression)	<b>6.1%</b>



**ggpdk9unit**

Sun 10/31/2021 9:43 am PDT

Obedience is the most important thing we train. All else comes second to obedience. Before the dog learns searching, detecti...



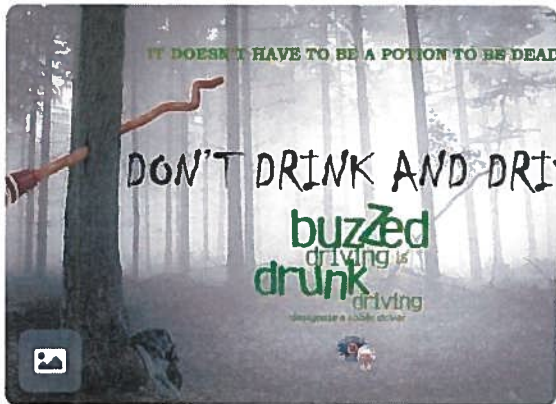
Video Views	<b>703</b>
Impressions	<b>1,240</b>
Reach	<b>1,124</b>
Engagements	<b>151</b>
Engagement Rate (per Impression)	<b>12.2%</b>



**Garden Grove Police Depa...**

Sat 10/30/2021 12:00 pm PDT

Don't be a real monster this #Halloween. Celebrate responsibly by #PlanningAhead and designating a #sober driver. To crac...



Impressions	<b>3,926</b>
Reach	<b>3,783</b>
Engagements	<b>127</b>
Engagement Rate (per Impressi...	<b>3.2%</b>



**Garden Grove Police Depa...**

Fri 10/29/2021 6:01 pm PDT

On October 14, 2021, #GardenGrovePD School Resource Officers (SROs) responded Pacifica Mariners Baseball reference the...



Impressions	<b>12,556</b>
Reach	<b>12,001</b>
Engagements	<b>2,840</b>
Engagement Rate (per Impres...	<b>22.6%</b>



**Garden Grove Police Depa...**

Thu 10/28/2021 7:16 pm PDT

Earlier today, Chief DaRé and #GardenGrovePD staff members joined local students for story time. This year's...



Video Views	<b>1,645</b>
Impressions	<b>3,348</b>
Reach	<b>3,201</b>
Engagements	<b>325</b>
Engagement Rate (per Impressi...	<b>9.7%</b>



## Post Performance

October 28, 2021 - November 3, 2021

Review the lifetime performance of the posts you published during the publishing period.



**Included in this Report**

 @GardenGroveTV3

 Garden Grove TV 3



@GardenGroveTV3

Tue 11/2/2021 12:00 pm PDT

All veterans are important. Come join the celebration. Congressmen Lou Correa & Alan Lowenthal, in conjunction with the...



Impressions	—
Potential Reach	434
Engagements	—
Engagement Rate (per Impression)	—

**WEEKLY MEMO 11-4-2021**

# **NEWS ARTICLES**

## Cemetery at Christ Cathedral blessed after extensive expansion



Bishop of Orange Kevin W. Vann blesses the Cathedral Memorial Gardens cemetery at Christ Cathedral in Garden Grove on Tuesday, November 2, 2021. The memorial gardens, created in 1991 under the Rev. Robert Schuller, underwent an \$18.5-million expansion doubling the size to 69,150 square feet. (Photo by Leonard Ortiz, Orange County Register/SCNG)

By [HEATHER MCREA](#) | [hmcrea@scng.com](mailto:hmcrea@scng.com) | Orange County Register

PUBLISHED: November 2, 2021 at 6:05 p.m. | UPDATED: November 3, 2021 at 9:38 a.m.

The blessing of the \$18.5 million expansion of the Memorial Gardens cemetery at the Christ Cathedral was celebrated Tuesday, Nov. 2, by the Diocese of Orange.

The [expansion was completed this summer and opened to families in July](#). On Tuesday, it was blessed by the Most Rev. Kevin Vann and other monsignors, who walked through sprinkling holy water, and visitors toured the new sections which added more than double the burial space as well as a new mausoleum and new artwork.

The Sanctuary of Eternal Life mausoleum features a stained-glass depiction of Jesus by artist Elizabeth Devereaux.

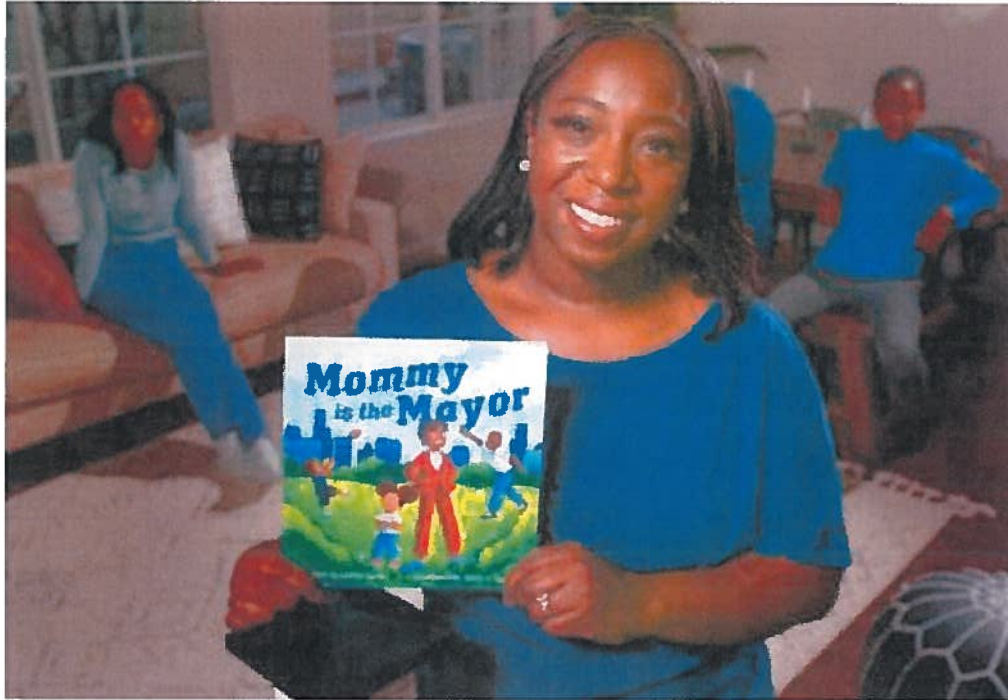
Added landscaping has taken hold and started to fill in around the paths meandering the sections now named for the Seven Gifts of the Holy Spirit: Understanding, Wisdom, Courage, Counsel, Knowledge, Wonder and Reverence.

The cemetery opened in 1991, when the campus was the Crystal Cathedral under the leadership of the Rev. Robert Schuller. The cemetery remains ecumenical, meaning it is open to Catholics and non-Catholics.

Tuesday's celebration included a Mass and the playing of the Crean Tower carillon bells.

## Tustin's Mayor hopes her book can woo girls and children of color into politics

Letitia Clark's "Mommy is the Mayor" tells a story that hits close to home.



Tustin Mayor Letitia Clark has written a children's book "Mommy is the Mayor", given birth to a son 8 weeks ago with her new husband, and is a mom to two teenagers. (Photo by Greg Andersen, Contributing Photographer)

By [SUSAN CHRISTIAN GOULDING](#) | [sgoulding@scng.com](mailto:sgoulding@scng.com) | Orange County Register  
PUBLISHED: October 26, 2021 at 4:39 p.m. | UPDATED: October 27, 2021 at 2:29 p.m.

Letitia Clark juggles more responsibilities than might seem humanly possible: Tustin mayor; community college district administrator; mom to two teenagers and, get this, a newborn.

Now, Clark has added another notch to her resume – author.

Clark depicts the busy life of a city leader in her first book, "Mommy is the Mayor." The self-published children's novelette hit bookstores and [Amazon.com](#) earlier this month. Written from her daughter's perspective, the 22 pages feature rhyming stanzas such as, "When I asked Mommy, 'What does a mayor even do?'/She seemed a bit surprised but said, 'Well, let me show you!'"

Colorful illustrations spotlight a family of four – pre baby – tossing footballs, distributing campaign pamphlets and, on election night, celebrating victory.

Clark's fictional self is sharply dressed in a red pantsuit, whether strolling in a park or speaking at a podium. Daughter Carin George-Bell, portrayed as younger than her current age of 14, sports fluffy pigtails.

"There has been much conversation in my family: Do we really look like these characters?" Clark said, laughing. "They fact-checked me."

"Maybe Mom still thinks we're little kids," Carin added, referring to herself and her twin brother, Theo.

But, overall, both of the older kids are happy with their mother's book.

"We're really proud of her," Theo said.

Clark's passion project came with a tight deadline.

"My main goal was to get it published while I was still mayor," she said. There was no time to waste. Because city council members in Tustin take annual turns serving as mayor, Clark will lose her title in December.

As a Black woman, currently the only Black mayor in Orange County, Clark hopes her book will inspire girls and children of color to run for office someday. But that message is subtle, conveyed more in the illustrations – created by Seattle-based artist Sarah K. Turner – than in the text. Indeed, nowhere in her book does Clark reference her race.

"The imagery alone speaks volumes," Clark said. "It normalizes for kids that a family of color is just like any other family."

Tustin Mayor Letitia Clark, center, holding 8-week-old, Zavier Bell, husband Zachary Bell, top, son Theodore George-Bell, left, and daughter Carin George-Bell, right. Letitia has written a children's book "Mommy is the Mayor". (Photo by Greg Andersen, Contributing Photographer)

"In my own life, I don't lead with the fact that I'm a Black woman when I walk in a room," she added. "Yes, I'm a person of color. That's evident. But it's not what's most important."

One image in the book slyly alludes to the stubborn deficit of women and minorities in politics. The text reads, "Mommy has a big office down at city hall. She even has her picture placed high on the wall." Juxtaposed, an illustration shows a cartoon head shot of the Black female mayor. It hangs alongside two other framed portraits, both of white men.

As Clark worked on the book, she faced another deadline – aiming to tie up loose ends before the arrival of her youngest child, Zavier, born on Aug. 26.

Her pregnancy was both planned and a bit surprising. In early 2020, Clark married her longtime beau, Zach Bell, dean at a Santa Ana charter school. The newlyweds decided to expand their brood.

"I was 39 and not 100% sure I could get pregnant again," Clark said. "But it happened right away, so it was meant to be."

Clark and Bell have known each other since they were classmates at Tustin High, where she was a cheerleader and he was a football player. But after graduation, college and careers took them in different directions.

In 2014, when both were back in Tustin and Clark was recently divorced, they reunited at a friend's birthday party. Two years later, Clark decided to run for city council.

"I was her first volunteer," Bell said.

Despite the age gap between latecomer Zavier and themselves, the ninth-graders approve. "It's exciting to be a big brother," Theo said. "Even though he sleeps all the time."

On a too-regular basis, in their shared opinion, Carin and Theo have to deal with their mother's local fame while out in public.

"Someone starts talking to my mom and they just keep talking forever," Theo said.

"Yep. If we go to the store and even one person comes up to my mom, I know I'm going to be there for another 10 minutes," Carin agreed.

"They know my name but I don't know theirs."

There is one question people routinely ask, Clark said: "Will you run for higher office?"

"I *do* see this as higher office," Clark said. "Serving on the city council has been the honor of my life. I always feel privileged when I get to walk in the chamber and sit up there on the dais. It's very surreal and humbling."

Still, the short answer to that question is this: Maybe, someday.

"I love the policy part and I love the people part of holding public office," Clark said. "It's why my family allows us to make so many sacrifices; they see how much it means to me to be involved."

"But whether I run for something else depends on my family. I can't make those decisions on my own."

Bell promised he'll back Clark's next step, in politics or elsewhere.



“My wife can do and be whatever she wants to do and be,” Bell said. “I subscribe to, ‘Happy spouse, happy house.’ So long as everyone is happy and healthy, I’m game.”

It’s the very lesson Clark means for children to take away from her book. “I wanted to show that women can be mayor, and Black people can be mayor,” she said.

At least one girl has heard her loud and clear.

“For school assignments, we’re always asked, ‘Who is your role model?’” Carin said. “I usually say my mom.

“Now, with this book, she can be a role model for lots of people.”

<https://www.calcities.org/detail-pages/news/2021/10/27/garden-groves-mobile-response-team-provides-free-emergency-mental-health-care>



# Garden Grove's mobile response team provides free, emergency mental health care

*Oct 27, 2021*

The program is staffed by counselors from a nearby nonprofit, with funding provided by the CARES Act and the city of Garden Grove, which also provides logistical support.

Access to proper mental health care is prohibitively expensive or even nonexistent for most Americans. With nowhere else to go, individuals suffering from mental health crises are increasingly turning to police departments for help. The city of Garden Grove, located in northern Orange County, fields approximately 14,500 mental health-related calls annually.



Nationwide, such calls can lead to devastating, life-altering results. On average, 40% of Americans with a serious mental illness will come into contact with the criminal justice system, usually for low-level offenses. A widely cited study presented to the U.S. House of Representatives found that these individuals remain in jail longer than their peers, are more likely to gain new charges while incarcerated, are seven times more costly to house, and are less likely to make

bail. Tragically, <https://www.nami.org/mhstats> **1 in 4 officer-involved fatalities** <https://www.nami.org/mhstats> involves someone with a mental health condition.

Critics and police departments are calling for change. One model that's gaining traction among police departments, including Garden Grove, are civilian-staffed mental health crisis teams. Known as the <https://ggcity.org/be-well-oc-garden-grove> **Be Well OC Mobile Response Team**, <https://ggcity.org/be-well-oc-garden-grove> the city of Garden Grove's mental health crisis team is made up of crisis counselors from Be Well OC, a mental health organization located in the city of Orange.

The mobile response team is funded by a combination of Coronavirus Aid, Relief, and Economic Security Act dollars, the Low- and Moderate-Income Asset Fund, and Garden Grove's general fund. "Great credit also goes to Huntington Beach," said City Manager Scott Stiles; the nearby city launched <https://www.huntingtonbeachca.gov/residents/bewellhb/> **a similar program in August** <https://www.huntingtonbeachca.gov/residents/bewellhb/> and provided Garden Grove with some initial insight.



Garden Grove also provides logistical support to the mobile response team, just like they would for any other emergency service. Police department dispatchers triage calls received through the city's non-emergency line and 911. Before the team is deployed, dispatchers will confirm that the callers' needs match the services rendered and that the

situation is non-medical, nonviolent, and does not involve weapons.

City staff hope that the program will lead to better outcomes for those experiencing a mental health crisis and allow police officers to return to their core patrol duties. Best of all for residents: The services are completely free for anyone — from “an unhoused resident to a member of a wealthy family,” said Stiles.

### How does it work?

The Be Well OC Mobile Response Team specializes in de-escalation and can provide counseling, information, referrals, transportation to services, and ongoing case management. Additionally, the team can assist with a variety of non-emergency, non-medical situations. In collaboration with the police department’s homeless task force, the Be Well OC team can transport willing individuals to a shelter or other location where their short-term, and long-term needs can be met. They can also help with welfare checks, death notifications, domestic issues, addiction, and other similar issues.

“What’s really interesting is that a lot of the team’s calls are officer-generated calls: It’s the officers out in the field who have run across someone who appears to need mental health services and they are making some of the initial health calls. The city council, my office, and the police department are really interested in seeing how things work,” said Stiles.



On its own, Garden Grove can respond to around 30 such calls per day — nearly 11,000 annually—and operates between 9:00 a.m. and 9:00 p.m. The city also has a reciprocity agreement with Huntington Beach, which may allow them to reach even more residents. By the end of the year, the program will include additional teams, with counselors available 18 hours a day.

Garden Grove plans to launch a mobile mental health dashboard, which will show the number of calls, the nature of the calls, and other important data points. The pilot program ends next October but may be extended after input from internal and external stakeholders.

Be Well OC in Garden Grove is truly a program for everyone,” said Marshall Moncrief, CEO of Be Well OC. “It supports residents, first responders, healthcare workers, social service professionals, and the entire community with a clinically-effective and cost-effective response to mental illness, substance use, and homelessness.”

1400 K Street, Suite 400  
Sacramento, CA 95814

P: (916) 658-8200

F: (916) 658-8240

# Garden Grove ‘ra mắt’ nhóm ứng phó lưu động hỗ trợ cư dân

October 23, 2021

Trà Nhiên/Người Việt

**GARDEN GROVE, California (NV)** – Thành phố Garden Grove vừa thông báo hợp tác với tổ chức Be Well Orange County (Be Well OC), “ra mắt” chương trình chăm sóc sức khỏe tâm thần, với tên gọi “Be Well OC in Garden Grove Mobile Response Team,” lập thành một nhóm ứng phó lưu động di chuyển bằng xe van để đánh giá, kiểm tra và hỗ trợ cư dân có triệu chứng tâm thần, nghiện chất kích thích, hoặc trong tình trạng vô gia cư.



Chương trình nhóm ứng phó lưu động có hai cố vấn viên tâm lý hỗ trợ và cải thiện tình cảnh của cư dân. (Hình: Garden Grove City cung cấp)

Theo thông cáo báo chí của thành phố Garden Grove, xe van màu xanh dương của nhóm hoạt động như chiếc ambulance, có đầy đủ các thiết bị y tế và có hai cố vấn tâm lý được đào tạo chuyên môn để giúp cư dân đối phó với cảm xúc tiêu cực và hỗ trợ họ kết nối với xã hội.

Nhóm ứng phó lưu động can thiệp vào các trường hợp không khẩn cấp và không liên quan đến điều trị y tế như khủng hoảng tâm lý, ý định tự tử, trợ giúp công cộng, các vấn đề tranh chấp gia đình và bạo lực, lạm dụng ma túy, nghiện rượu, thông báo tử vong, những chương trình phúc lợi chính phủ...



Nhóm cũng hợp tác với Đội Tài Nguyên Đặc Biệt thuộc Sở Cảnh Sát Garden Grove để kết nối các dịch vụ.

Ngoài ra, nhóm còn đưa người cần giúp đỡ đến bệnh viện, trung tâm y tế hoặc cung cấp thông tin, các nguồn tư vấn, giới thiệu dịch vụ đưa đón thích hợp nếu cần thiết, cũng như theo dõi quản lý theo từng trường hợp để cải thiện tình cảnh của cư dân.

Thị Trưởng Garden Grove Steve Jones cũng cho biết trong thông cáo rằng nhóm ủng hộ lưu động giúp cảnh sát thành phố tập trung giải quyết những vấn đề khẩn cấp khác.

“Hàng năm, có khoảng 14,500 cuộc gọi tại Garden Grove liên quan đến vấn đề sức khỏe tâm thần. Tôi tin rằng mối quan hệ hợp tác mới này với Be Well OC sẽ là một bước tiến tuyệt vời trong việc giải quyết vấn đề sức khỏe tâm thần, lạm dụng chất kích thích và tình trạng vô gia cư,” ông Jones nói.



Nhóm ứng phó lưu động di chuyển trên xe van màu xanh chuyên hỗ trợ cư dân chịu khủng hoảng tâm lý, lạm dụng chất kích thích, và tình trạng vô gia cư. (Hình: Garden Grove City cung cấp)

Nghị Viên Garden Grove Diedre Thu-Hà Nguyễn (Địa Hạt 3) cho biết chương trình còn có cố vấn viên thông thạo tiếng Việt.

“Thành phố Garden Grove có khoảng 40% cư dân là người gốc Việt nên có cố vấn viên nói tiếng ‘mẹ đẻ’ sẽ dễ thông cảm và giúp đỡ được nhiều người hơn,” bà Diedre Thu-Hà nói với phóng viên nhật báo Người Việt hôm 21 Tháng Mười.

“Đôi khi cảnh sát can thiệp các trường hợp này không phù hợp vì họ không phải chuyên gia tâm lý nên khi cư dân có biểu hiện khủng hoảng tinh thần dẫn đến các hành động khiến cảnh sát hiểu lầm, nên dễ gây ra chuyện đáng tiếc. Thêm vào đó, người bị khủng hoảng đôi lúc cũng sợ cảnh sát nên có khuynh hướng phòng vệ, và không chịu hợp tác,” bà thêm.

Bà Diedre Thu-Hà cũng cho biết thêm rằng theo báo cáo có 73 cuộc gọi đến nhóm ứng phó lưu động trong vòng năm ngày đầu tiên hoạt động.



Được biết, chương trình này được thành phố tài trợ ngân sách và hợp tác với Be Well OC cùng Orange County.

Ngoài Garden Grove, thành phố Huntington Beach cũng có chương trình này và sẽ dần mở rộng ra các khu vực khác.

Be Well OC là tổ chức cung cấp các dịch vụ hỗ trợ sức khỏe về tâm thần và tinh thần cho cư dân Orange County.



Chương trình còn có cố vấn viên lưu loát song ngữ để giúp cư dân dễ dàng kết nối với chuyên gia tâm lý và nhận sự giúp đỡ cần thiết. (Hình: Garden Grove cung cấp)

Nhóm ứng phó lưu động làm việc bảy ngày một tuần, từ 9 giờ sáng đến 9 giờ tối.

Cư dân Garden Grove, bất kể điều kiện tài chính hay bảo hiểm y tế, có thể gọi đường dây không khẩn cấp của Sở Cảnh Sát Garden Grove qua số điện thoại (714) 741-5704 và nhân viên điều phối sẽ sắp xếp cuộc gọi.

Để biết thêm thông tin về chương trình, xin vào trang web [ggcity.org/be-well](http://ggcity.org/be-well).



—  
*Liên lạc tác giả: [nguyen.nhien@nguai-viet.com](mailto:nguyen.nhien@nguai-viet.com)*

(Visited 1 times, 1 visits today)

(Visited 1 times, 1 visits today)



<https://vietbao.com/p113a309944/thanh-pho-garden-grove-dong-hanh-cung-chuong-trinh-be-well-oc-cung-cap-ho-tro-suc-khoe-trong-cong-dong>

**Khi bạn tiêm chủng...**

**Khi bạn tiêm chủng...**

VIỆT BẢO › Tin Tức › Tin Ngày › Cộng Đồng

Trước Sau

# Thành Phố Garden Grove Đồng Hành Cùng Chương Trình Be Well Oc Cung Cấp Hỗ Trợ Sức Khỏe Trong Cộng Đồng

21/10/2021

Chúng tôi sử dụng cookie để cung cấp cho bạn trải nghiệm tốt nhất trên trang web của chúng tôi. Nếu tiếp tục, chúng tôi cho rằng bạn đã chấp thuận cookie cho mục đích này. [Đồng ý](#)



Thành Phố Garden Grove, hợp tác với Be Well OC, thông báo ra mắt chương trình chăm sóc sức khỏe tâm thần, được gọi là 'Be Well OC in Garden Grove Mobile Response Team', để đánh giá, kiểm tra và giúp ổn định cho cư dân nếu trải qua khủng hoảng sức khỏe tâm thần, sử dụng chất kích thích và cũng như trong tình trạng vô gia cư.

Thị trưởng Steve Jones chia sẻ, “Hàng năm, có khoảng 14,500 cuộc gọi tại Garden Grove liên quan đến vấn đề sức khỏe tâm thần. Tôi tin rằng mối quan hệ hợp tác mới này với Be Well OC sẽ là một bước tiến tuyệt vời trong việc giải quyết vấn đề sức khỏe tâm thần, lạm dụng chất kích thích và tình trạng vô gia cư, đồng thời giúp các cảnh sát Garden Grove không phải tập trung vào việc giải quyết các cuộc gọi khẩn cấp liên quan đến vấn đề tâm thần và nghiện thuốc.”

Nhóm ứng phó di động (mobile response team), gồm có hai cố vấn (counselor), những người có kinh nghiệm với một cộng đồng đa văn như Garden Grove, có những Chúng tôi sử dụng cookie để cung cấp cho bạn trải nghiệm tốt nhất trên trang web của Đồng ý chúng tôi. Nếu tiếp tục, chúng tôi cho rằng bạn đã chấp thuận cookie cho mục đích này.

hợp (case management).

Nhóm 'Be Well OC in Garden Grove Mobile Response Team' làm việc bảy ngày một tuần, từ 9:00 giờ sáng đến 9:00 giờ tối. Cư dân Garden Grove, bất kể điều kiện tài chính hay bảo hiểm y tế, có thể gọi đường dây không khẩn cấp của Sở Cảnh sát Garden Grove theo số (714) 741-5704 hoặc 9-1-1, và nhân viên điều phối sẽ sắp xếp cuộc gọi. Nhóm 'Be Well OC in Garden Grove Mobile Response Team' được chuẩn bị để hỗ trợ nhiều tình huống không khẩn cấp và không liên quan đến điều trị y tế bao gồm: sức khỏe tâm thần, chấn thương tâm lý, ý định tự tử, trợ giúp công cộng, các vấn đề tranh chấp gia đình và bạo lực, lạm dụng và nghiện rượu, ma túy, những chương trình phúc lợi chính phủ, thông báo tử vong, và tình trạng vô gia cư, với sự hợp tác của Đội Tài nguyên Đặc biệt của Sở Cảnh sát Garden Grove (Special Resources Team).

Giám sát viên Andrew Đỗ, Chủ tịch Hội đồng Giám sát Quận Cam cho biết, "Be Well OC in Garden Grove Mobile Response Team' là một bước tiến trong việc xây dựng một hệ thống chăm sóc sức khỏe tâm thần và là một đóng góp thiết thực cho cộng đồng chúng ta. Nhóm sẽ làm việc cùng với các chương trình hiện có của Quận Cam, chẳng hạn như 'Crisis Assessment Team' và 'Psychiatric Emergency and Response Team' để mở rộng phạm vi dịch vụ sức khỏe tâm thần mà chúng tôi cung cấp cho cộng đồng. Tôi vô cùng vinh dự đồng hành cùng chương trình để giúp Quận Cam cung cấp dịch vụ chăm sóc quan trọng cho những người cần giúp đỡ và mong được tiếp tục công việc này."

Để biết thêm thông tin chương trình 'Be Well OC in Garden Grove Mobile Response Team' những tin tức từ đài Garden Grove TV3, xin xem tại [ggcity.org/be-well](http://ggcity.org/be-well).

Chúng tôi sử dụng cookie để cung cấp cho bạn trải nghiệm tốt nhất trên trang web của chúng tôi. Nếu tiếp tục, chúng tôi cho rằng bạn đã chấp thuận cookie cho mục đích này. Đồng ý



CONTACT: Mark Freeman  
(714) 741-5212  
Community Services Department

**FOR IMMEDIATE RELEASE**

Public Information Office (714) 741-5280

Follow the City of Garden Grove on Social Media

Thursday, November 4, 2021



**ANNUAL WINTER IN THE GROVE EVENT OFFERS SNOW  
SLIDES AND HOLIDAY CRAFT BOUTIQUE**

The City of Garden Grove's Community Services Department hosts the 4<sup>th</sup> annual Winter in the Grove community event on Saturday, December 4, 2021, from 3:00 p.m. to 7:00 p.m. in Village Green park, located at 12732 Main Street. Entry to the event is free.

The popular "Snowtopia" attraction features 50 tons of snow to create nine snow slides. Unlimited snow rides are \$5 per person. Wristbands can be purchased in advance at [ggcity.org/winterinthegrove](http://ggcity.org/winterinthegrove).

This year, the holiday craft boutique returns, offering handmade items from local vendors. Other activities include entertainment from local performers and schools, inflatables, craft-making, holiday photo areas, and holiday treats. The event culminates with the lighting of a 24-foot, fully decorated tree, along with a visit by Santa and Mrs. Claus.

Please do not attend this event if you have had direct contact with someone who has tested positive for COVID-19, or if you are experiencing symptoms such as coughing, sneezing, fever, difficulty breathing or other flu-like symptoms.

Businesses and organizations interested in sponsoring Winter in the Grove can call (714) 741-5290.

-more-

WINTER IN THE GROVE  
2-2-2

For more information, visit [ggcity.org/winterinthegrove](http://ggcity.org/winterinthegrove).

###



# CITY OF GARDEN GROVE NEWS

CONTACT: Ana Vergara-Neal  
Public Works Department  
(714) 741-5554/[anan@ggcity.org](mailto:anan@ggcity.org)

## FOR IMMEDIATE RELEASE

Public Information Office (714) 741-5280

Follow the City of Garden Grove on Social Media



Wednesday, November 3, 2021

## **CITY HOSTS FREE BULKY ITEM DROP-OFF SITES BEGINNING NOVEMBER 13**

The City of Garden Grove, in partnership with Republic Services, will host a series of community cleanup days throughout the city in an effort to help residents properly dispose of bulky items for free. The first community cleanup event will take place on Saturday, November 13, from 9:00 a.m. to 11:00 a.m., in west Garden Grove. The drop-off location is the alley east of the Garden Grove Tibor Rubin Library, at 11962 Bailey Street, adjacent to the Eastgate Shopping Plaza. The event is open to Garden Grove residents only.

Residents may dispose of unwanted household items, including bulky items, such as appliances, furniture, mattresses, and carpets. This will be a self-service event in which residents will be unloading their own items. The Garden Grove Public Works Department will be onsite to help elderly and disabled individuals who may need assistance.

Items not accepted include electronic waste, such as televisions, printers, radios and computers; hazardous waste, including paint and oil; and green waste, such as grass clippings and leaves.

The community cleanup initiative is part of the City's continued effort to keep public areas clean and clear of clutter, while providing residents with free access to disposal services.

11222 Acacia Parkway • P.O. Box 3070 • Garden Grove, CA 92842  
[ggcity.org](http://ggcity.org)



City Hosts Free Bulky Item Drop-Off Sites Beginning November 13  
2-2-2

The next community cleanup day is Saturday, December 11, 2021, from 9:00 a.m. to 11:00 a.m., at Hare School Park, located at 12012 Magnolia Street.

For a list of the 2022 Community Cleanup Days, visit the City's website at [ggcity.org](http://ggcity.org).

For more information, please contact the Garden Grove Public Works Department at (714) 741-5000.

###



# CITY OF GARDEN GROVE NEWS

CONTACT:  
Ana Pulido, Public Information Officer  
Office of Community Relations/GGTV3  
(714) 741-5280/[anap@ggcity.org](mailto:anap@ggcity.org)

## FOR IMMEDIATE RELEASE

Public Information Office (714) 741-5280

Follow the City of Garden Grove on Social Media



Tuesday, November 2, 2021

## **BLACK FRIDAY GOES "BiGG" WITH OPPORTUNITIES TO WIN \$500 AND MORE**

From Friday, November 26 through Thursday, December 16, the community is encouraged to participate in the City's end-of-year Buy in Garden Grove (BiGG) campaign, Black Friday Goes BiGG. For every \$50 spent in Garden Grove, shoppers will have the opportunity to win \$500, \$250, or a 1-night stay at the Great Wolf Lodge of Southern California. The deadline to participate is Thursday, December 16, at 1:00 p.m.

When shoppers collect \$50 in total register receipts from any Garden Grove establishment, including restaurants, gas stations, and grocery stores, they'll receive one raffle ticket toward a cash or prize drawing.

To receive raffle tickets, receipts dated between November 26 and December 16 must be brought to the Garden Grove Chamber of Commerce, located at 12866 Main Street, Suite 102, near the corner of Acacia Parkway and Main Street, before 1:00 p.m. on Thursday, December 16. Raffle tickets will not be available at business establishments.

The first 50 individuals to turn in their receipts will also receive a free gift.

If purchases were made from a participating BiGG business, Foods of Garden Grove restaurant, or Garden Grove Chamber of Commerce member, shoppers will receive an additional raffle ticket.

11222 Acacia Parkway • P.O. Box 3070 • Garden Grove, CA 92842  
[ggcity.org](http://ggcity.org)

Black Friday Goes "BiGG" with Opportunities to Win \$500 and More  
2-2-2

Visit [ggcity.org/big](http://ggcity.org/big), [ggcity.org/foodsofgardengrove](http://ggcity.org/foodsofgardengrove) or [gardengrovechamber.com](http://gardengrovechamber.com) for lists of participating businesses.

On Monday, December 20, the winning names and raffle ticket numbers will be posted on the City's and Chamber's websites and social platforms. One winner will receive \$500; two winners will receive \$250; and one winner will receive a 1-night stay at the Great Wolf Lodge Southern California.

Winners will have 30 days to claim their prize from the Garden Grove Chamber of Commerce. Participants must be at least 18 years of age to win. Only one prize per winner.

For over 10 years, the City has encouraged residents to support local businesses through the BiGG program, which helps to keep needed tax dollars in the city for essential resources like public safety, roads, parks, and other quality-of-life needs.

There is no charge to become a BiGG business. Businesses can sign up at [ggcity.org/big](http://ggcity.org/big).

For more information, visit [ggcity.org/big](http://ggcity.org/big), or contact the Office of Community Relations at (714) 741-5280 or the Garden Grove Chamber of Commerce at (714) 638-7950.

###



# CITY OF GARDEN GROVE NEWS

CONTACT: Mark Ladney  
(714) 741-5382  
Public Works Department

## FOR IMMEDIATE RELEASE

Public Information Office (714) 741-5280

Follow the City of Garden Grove on Social Media

Monday, November 1, 2021



### **CITY HALL CLOSED ON VETERANS DAY**

In observance of the Veterans Day holiday, Garden Grove City Hall will be closed on Thursday, November 11, 2021. No street sweeping services will be provided on the holiday. Streets will be swept as scheduled on all other days. Trash pickup with remain as scheduled.

For more information on street sweeping, please call the Public Works Department at (714) 741-5375.

###



# CITY OF GARDEN GROVE NEWS

CONTACT: Gabi O'Cadiz-Hernandez  
(714) 741-5769  
Community Services Department

Monday, November 1, 2021

## FOR IMMEDIATE RELEASE

Public Information Office (714) 741-5280

Follow the City of Garden Grove on Social Media



### DONATE TO GARDEN GROVE'S HOLIDAY DRIVE

The community is invited to participate in an end-of-year program designed to bring joy, spirit, and hope to nearly 1,000 local children who go without a gift during the holiday season. From Monday, November 1 to Friday, December 10, the City's family resource centers are seeking donations of new board games and toys for the annual Garden Grove Holiday Drive. Donations may be dropped off at the Recreation Counter located in Garden Grove City Hall, at 11222 Acacia Parkway; Buena Clinton Youth and Family Center, located at 12661 Sunswept Avenue; or Magnolia Park Family Resource Center, located at 11402 Magnolia Street.

Monetary donations and gift cards are also accepted, and are tax-deductible.

The Magnolia Park Family Resource Center and the Buena Clinton Youth and Family Center provide residents with low or no-cost programs focused on youth enrichment, personal empowerment, counseling, family support services, and parenting education.

For over 20 years, the City has worked to bring holiday cheer to local disadvantaged families. In 2020, with assistance from the community, 340 local families, and approximately 840 children, received gifts.

For more information, visit <https://ggcity.org/community-services/holiday-drive> or call (714) 741-5208.

###

11222 Acacia Parkway • P.O.Box 3070 • Garden Grove, CA 92842  
ggcity.org

## **MISCELLANEOUS ITEMS**

**November 4, 2021**

1. Calendar of Events
2. Notices of cancellation of the November 11, 2021 and November 25, 2021 Zoning Administrator meetings.
3. League of California Cities, "CalCities," from October 29, 2021 to November 4, 2021.



**GARDEN GROVE**

## CALENDAR OF EVENTS

November 4, 2021 – December 17, 2021

---

---

Thursday	November 4	6:00 p.m.	Planning Commission Meeting, CMC
Friday	November 5		City Hall Closed – Regular Friday Closure
Tuesday	November 9	5:30 p.m. 6:30 p.m.	Closed Session, CMC Successor Agency Meeting, CMC City Council Meeting, CM
Wednesday	November 10	9:00 a.m.	Downtown Commission Meeting, CMC  Holiday Drive \$2 Casual Dress Day
Thursday	November 11		City Hall Closed – Veteran’s Day
Thursday	November 18	6:00 p.m.	Planning Commission Meeting, CMC \$2 Casual Dress Day
Friday	November 19		City Hall Closed – Regular Friday Closure
Tuesday	November 23	5:30 p.m. 6:30 p.m.	Closed Session, CMC Housing Authority, CMC Sanitary District Board, CMC Successor Agency Meeting, CMC City Council Meeting, CM
Thursday	November 25		City Hall Closed – Thanksgiving Holiday Closure
Friday	November 26		City Hall Closed – Thanksgiving Holiday Closure
Thursday	December 2	6:00 p.m.	Planning Commission Meeting, CMC
Friday	December 3		City Hall Closed – Regular Friday Closure
Thursday	December 9		Holiday Drive \$2 Casual Dress Day
Tuesday	December 14	5:30 p.m. 6:30 p.m.	Closed Session, CMC Successor Agency Meeting, CMC City Council Meeting, CM
Thursday	December 16	6:00 p.m.	Planning Commission Meeting, CMC
Friday	December 17		City Hall Closed – Regular Friday Closure

---

---



**GARDEN GROVE**

---

---

**NOTICE OF CANCELLATION  
OF THE  
GARDEN GROVE  
ZONING ADMINISTRATOR  
REGULAR MEETINGS  
NOVEMBER 11 & 25, 2021**

NOTICE IS HEREBY GIVEN that the Regular Meeting of the Garden Grove Zoning Administrator scheduled for Thursday, November 11 & November 25, at 9:00 a.m. at City Hall, 11222 Acacia Parkway, Third Floor Training Room, Garden Grove, are hereby cancelled pursuant to the attached Cancellation Notice.

DATED: November 4, 2021

DAVID DENT  
ZONING ADMINISTRATOR





# Joining forces, not “strike forces,” needed to house Californians

*Nov 3, 2021*

## **FOR IMMEDIATE RELEASE**

Contact: Kayla Woods

Cell: (530) 844-1744, [kwoods@cacities.org](mailto:kwoods@cacities.org) (<mailto:kwoods@cacities.org>)

**Sacramento** – Following the Attorney General’s announcement of the creation of a Housing Strike Force, League of California Cities Executive Director and CEO Carolyn Coleman released the below statement:

“California cities have been taking our state’s housing crisis seriously for years and have made significant progress planning for and approving housing across all income levels within their communities. They have been doing this using their own plans, while abiding by the state’s myriad of everchanging laws. By the end of next year, all of the state’s major regional governments, including cities, will have identified and planned for more than two million units of additional housing statewide. Those two million units are on top of the millions of homes that cities have already planned, zoned, and approved previously.

“The comments made during the Attorney General’s press conference today, demonizing all cities for things they do not control will not put roofs over the heads of Californians. Cities do not build homes, and for years have endured whiplash from the state’s scattershot approach to passing housing laws that are often in direct conflict with each other and counterproductive to our shared goals to increase housing supply.

“If the state is looking for a real solution to this decades-in-the-making housing crisis, we urge a pause on unproven top-down state mandates and enforcement policies and call on the state to work as a true partner with local governments to get housing built for all Californians.”

*Established in 1898, the League of California Cities is a nonprofit statewide association that advocates for cities with the state and federal governments and provides education and training services to elected and appointed city officials.*

1400 K Street, Suite 400  
Sacramento, CA 95814

P: (916) 658-8200

F: (916) 658-8240



# Guide to Local Recovery: November 3

Nov 3, 2021

On Oct. 28, the White House released a new framework for the [\(https://www.whitehouse.gov/briefing-room/statements-releases/2021/10/28/president-biden-announces-the-build-back-better-framework/\)](https://www.whitehouse.gov/briefing-room/statements-releases/2021/10/28/president-biden-announces-the-build-back-better-framework/) **Build Back Better Act** [\(https://www.whitehouse.gov/briefing-room/statements-releases/2021/10/28/president-biden-announces-the-build-back-better-framework/\)](https://www.whitehouse.gov/briefing-room/statements-releases/2021/10/28/president-biden-announces-the-build-back-better-framework/) . The outline includes nearly \$2 trillion in funding for a variety of key areas, including investments in workforce development, climate resiliency, and housing affordability. The bill is politically tied to the Infrastructure Investment and Jobs Act, which passed in the Senate in August.

The investments, opportunities, and economic growth that these two bills would provide are critical to cities' continued recovery from the COVID-19 pandemic. Officials are encouraged to contact their representatives to urge them to vote yes on both the [\(https://www.nlc.org/article/2021/10/28/what-the-build-back-better-act-includes-for-cities/\)](https://www.nlc.org/article/2021/10/28/what-the-build-back-better-act-includes-for-cities/) **Build Back Better Act** [\(https://www.nlc.org/article/2021/10/28/what-the-build-back-better-act-includes-for-cities/\)](https://www.nlc.org/article/2021/10/28/what-the-build-back-better-act-includes-for-cities/) and the [\(https://www.nlc.org/article/2021/08/10/what-the-senate-infrastructure-bill-means-for-local-governments/\)](https://www.nlc.org/article/2021/08/10/what-the-senate-infrastructure-bill-means-for-local-governments/) **Infrastructure Investment and Jobs Act** [\(https://www.nlc.org/article/2021/08/10/what-the-senate-infrastructure-bill-means-for-local-governments/\)](https://www.nlc.org/article/2021/08/10/what-the-senate-infrastructure-bill-means-for-local-governments/) via this [\(https://nlc.quorum.us/campaign/36155/\)](https://nlc.quorum.us/campaign/36155/) **member action alert** [\(https://nlc.quorum.us/campaign/36155/\)](https://nlc.quorum.us/campaign/36155/) .

The National League of Cities is hosting two American Rescue Plan Act (ARPA) webinars. On Nov. 4 at 11:00 a.m., city leaders and data and experts will cover

## how to effectively capture, analyze, and visualize data

([https://www.nlc.org/events/arpa-office-hour-leveraging-data-to-deploy-track-arpa-investments/?](https://www.nlc.org/events/arpa-office-hour-leveraging-data-to-deploy-track-arpa-investments/?utm_campaign=Newsletter&utm_medium=email&utm_source=informz&utm_content=fa-newsletter-20211102&utm_term=text-register)

[utm\\_campaign=Newsletter&utm\\_medium=email&utm\\_source=informz&utm\\_content=fa-newsletter-20211102&utm\\_term=text-register?](https://www.nlc.org/events/arpa-office-hour-leveraging-data-to-deploy-track-arpa-investments/?utm_campaign=Newsletter&utm_medium=email&utm_source=informz&utm_content=fa-newsletter-20211102&utm_term=text-register)

[utm\\_campaign=Newsletter&utm\\_medium=email&utm\\_source=informz&utm\\_content=fa-newsletter-20210921&utm\\_term=text-register&\\_zs=GHHjc&\\_zl=uHGp2](https://www.nlc.org/events/arpa-office-hour-leveraging-data-to-deploy-track-arpa-investments/?utm_campaign=Newsletter&utm_medium=email&utm_source=informz&utm_content=fa-newsletter-20210921&utm_term=text-register&_zs=GHHjc&_zl=uHGp2)) as part of ARPA

planning and tracking efforts. The webinar is exclusive to

(<https://www.nlc.org/membership/join/>) NLC members

(<https://www.nlc.org/membership/join/>) .

On Nov. 5 at 8:30 a.m., NLC will discuss the ways city leaders can help connect eligible businesses to the ([https://www.nlc.org/events/using-sbas-eidl-program-to-support-small-business-recovery-in-your-community/?](https://www.nlc.org/events/using-sbas-eidl-program-to-support-small-business-recovery-in-your-community/?utm_campaign=Newsletter&utm_medium=email&utm_source=informz&utm_content=fa-newsletter-20211102&utm_term=text-register&_zs=GHHjc&_zl=wHGp2)

[utm\\_campaign=Newsletter&utm\\_medium=email&utm\\_source=informz&utm\\_content=fa-newsletter-20211102&utm\\_term=text-register&\\_zs=GHHjc&\\_zl=wHGp2](https://www.nlc.org/events/using-sbas-eidl-program-to-support-small-business-recovery-in-your-community/?utm_campaign=Newsletter&utm_medium=email&utm_source=informz&utm_content=fa-newsletter-20211102&utm_term=text-register&_zs=GHHjc&_zl=wHGp2)) **Small**

**Business Administration's COVID-19 Economic Injury Disaster Loan**

**Program** ([https://www.nlc.org/events/using-sbas-eidl-program-to-support-small-business-recovery-in-your-community/?](https://www.nlc.org/events/using-sbas-eidl-program-to-support-small-business-recovery-in-your-community/?utm_campaign=Newsletter&utm_medium=email&utm_source=informz&utm_content=fa-newsletter-20211102&utm_term=text-register&_zs=GHHjc&_zl=wHGp2)

[utm\\_campaign=Newsletter&utm\\_medium=email&utm\\_source=informz&utm\\_content=fa-newsletter-20211102&utm\\_term=text-register&\\_zs=GHHjc&\\_zl=wHGp2](https://www.nlc.org/events/using-sbas-eidl-program-to-support-small-business-recovery-in-your-community/?utm_campaign=Newsletter&utm_medium=email&utm_source=informz&utm_content=fa-newsletter-20211102&utm_term=text-register&_zs=GHHjc&_zl=wHGp2)) . These loans

have low, fixed interest rates and payments are deferred for the first two years.

During the webinar, city leaders will learn more about what businesses are eligible for the loans, the terms of loans, how to facilitate the application process, and more.



# CalPERS November board meeting: How cities can make their voices heard

*Nov 3, 2021*

On Nov. 15, the California Public Employees' Retirement System (CalPERS) will begin a three-day <https://www.calpers.ca.gov/page/about/board/board-meetings> **board meeting** (<https://www.calpers.ca.gov/page/about/board/board-meetings>) where changes to the discount rate — the long-term interest rate used to fund future pension benefits — will be discussed and voted on. Further changes could have significant financial implications for cities. Local officials are encouraged to testify about how any change to the discount rate could impact their cities.

In July, CalPERS announced that their investment returns for fiscal year 2020-21 was 21.3%. This triggered the Funding Risk Mitigation Policy and an automatic reduction in the discount rate, from 7% to 6.8%. In September, CalPERS began its <https://www.calpers.ca.gov/page/about/organization/facts-at-a-glance/asset-liability-management> **Asset Liability Management** (<https://www.calpers.ca.gov/page/about/organization/facts-at-a-glance/asset-liability-management>) process, a recurring, integrated review of its assets and liabilities with the intent of informing decisions designed to achieve a sustainable fund.

CalPERS staff presented a range of potential investment portfolios to its the Board of Administration, with discount rates ranging from 6.2% to 7.0%. The Board narrowed that range down to 6.5%, 6.8%, and 7.0%, and asked staff to bring back various options for investment portfolios that can produce those expected returns. The Board will consider a number of factors, including the

tolerance for market drawdown risk, acceptable volatility, and employers' ability to absorb different rate changes.

More information about the discount rate and Asset Liability Management process is available in a recent League of California Cities' recent webinar, "<https://www.youtube.com/watch?v=4p5EUfqV1Nw>) **CalPERS Update: How We Got Here and What's Next.** (<https://www.youtube.com/watch?v=4p5EUfqV1Nw>)" The webinar helps stakeholders understand CalPERS' approach to these issues, what these decisions mean for members and employers, and what the Board of Administration may do during its November meeting.

### Cal Cities position

The League of California Cities does not support a lowering of the discount rate. As the CalPERS Board of Administration considers which candidate portfolio would best suit the needs of the organization and its members, it is crucial that they understand the impacts that increased pension costs have on cities throughout California. City participation will help the Board understand the impact their vote could have on cities.

### How to participate

Cal Cities strongly encourages local officials to testify about how any change to the discount rate could impact their cities during the Board's Investment Committee meeting. Although the Board meeting is taking place in-person, there are in-person and call-in-by-phone options available for cities and members of the public to provide public comment. There will be a special public comment opportunity at the start of the open session of the Investment Committee on Nov. 15. This opportunity to comment will commence immediately following rollcall, at approximately 9:15 a.m. There will also be the normal opportunity for public comment after the agenda item itself is complete, as well as at the close of the committee.

Testimony is limited to three minutes.

Cities and members of the public can provide testimony by calling (800) 259-4105. Those wishing to participate should call a few minutes early, enter the queue, and provide their name and organization. The board meeting can be viewed by visiting the <https://www.calpers.ca.gov/page/about/board/board-meetings/webcast>) **CalPERS Board Webcast webpage** (<https://www.calpers.ca.gov/page/about/board/board-meetings/webcast>) .

If you are interested in sharing the impact that a further reduction of the discount rate or increased pension costs would have on your city with the CalPERS board, please provide public comment. Your city's perspective is valued and essential.

If you have any questions, please contact Deputy Executive Director **Melanie Perron** (<mailto:mperron@calcities.org>) , Advocacy and Public Affairs.

1400 K Street, Suite 400  
Sacramento, CA 95814

P: (916) 658-8200

F: (916) 658-8240



# Cal Cities President Silva appoints 2022 Coastal Cities Group Leadership Committee

*Nov 3, 2021*

League of California Cities President Cindy Silva has announced the new members of the Coastal Cities Group Leadership Committee. The Coastal Cities Group was created by the Cal Cities Board of Directors in Nov. 2006 as a forum for cities within the coastal zone to discuss coastal issues and build a relationship with the California Coastal Commission.

Each year, the Cal Cities president appoints representatives from six coastal regions to serve on the Leadership Committee to help facilitate the Group's operations and to play a key role in its activities. President Silva appointed the following individuals to serve on the Leadership Committee in 2022:

- Chair: Santa Barbara Council Member Eric Friedman
- Vice Chair: Pacifica Council Member Sue Beckmeyer
- North Coast: Fort Bragg Council Member Tess Albin-Smith
- North Central: Coast - Pacifica Council Member Sue Beckmeyer
- Central Coast: Pismo Beach Mayor Ed Waage
- South Central Coast: Santa Barbara Council Member Eric Friedman
- South Coast: Dana Point Mayor Pro Tem Joe Muller
- San Diego: Imperial Beach Council Member Ed Spriggs

Coastal city officials and staff are encouraged to engage with the Coastal Cities Group and Leadership Committee. Please visit the Coastal Cities Group's [webpage \(/home/get-involved/coastal-cities-group\)](#) to see who your region's



representative is and to learn about any coastal city events. To stay informed on pertinent coastal issues impacting cities, subscribe to the [\(http://lists.cacities.org/mailman/listinfo/coastalcities\) Coastal Cities Group listserv](http://lists.cacities.org/mailman/listinfo/coastalcities) ([\(http://lists.cacities.org/mailman/listinfo/coastalcities\)](http://lists.cacities.org/mailman/listinfo/coastalcities)).

For any questions regarding the Coastal Cities Group, please contact Cal Cities Legislative Policy Analyst (<mailto:ccirrinzione@calcities.org>) **Caroline Cirrinzione**, (<mailto:ccirrinzione@calcities.org>) who covers coastal issues.

1400 K Street, Suite 400  
Sacramento, CA 95814

P: (916) 658-8200

F: (916) 658-8240



# Statewide small business technical assistance now available: How city officials can help

Nov 3, 2021

The California Office of the Small Business Advocate (CalOSBA) has announced the **recipients of its California Small Business Technical Assistance Expansion Program (SB TAEP)**. (<https://cdn.calosba.ca.gov/wp-content/uploads/2021-22-TA-Awardees.pdf>) Approximately \$17 million in grant funding has been allocated to more than 80 technical assistance centers for expansion of their business consulting and training services to historically underserved business groups, including women-, minority-, and veteran-owned businesses, as well as businesses in low-wealth, rural, and disaster-impacted communities.

City officials are encouraged to connect office staff and refer their small businesses to a (<https://americassbdc.org/find-your-sbdc/>) **local Small Businesses Development Center** (<https://americassbdc.org/find-your-sbdc/>) to help facilitate technical assistance. These centers are vital resources for businesses seeking to recover and pivot in the current pandemic economy. In addition to any available city or county aid, local leaders can help small businesses get started towards technical assistance through CalOSBA's **find technical assistance site**. (<https://centers.calosba.ca.gov/>)

City officials across California are delivering aid to struggling small businesses as part of local recovery plans funded by local, state, and federal sources. To meet

this need, state and local officials have strongly supported infusions in technical assistance infrastructure throughout the pandemic.

The Governor's Office of Business and Economic Development notes that "small business technical assistance centers are designated by federal and private funding partners to operate small business technical assistance programs throughout the state. These centers provide one-on-one, confidential consulting, and training to help small businesses and entrepreneurs start, expand, facilitate investment, and create jobs in California. The SB TAEP provides state grant funding to expand consulting and training services provided by existing and new centers, including satellite offices."

Visit [\(https://calosba.ca.gov/\)](https://calosba.ca.gov/) **CalOSBA's** [\(https://calosba.ca.gov/\)](https://calosba.ca.gov/) website for more information.

1400 K Street, Suite 400  
Sacramento, CA 95814

P: (916) 658-8200

F: (916) 658-8240



# Guide to Local Recovery Updates

*Nov 3, 2021*

The League of California Cities is actively involved in gathering, deciphering, and providing cities with the resources they need to access pandemic relief funds, understand eligible uses for those funds, and comply with reporting requirements. Visit the Guide to Local Recovery resource page to explore the resources available to cities.

## **Guide to Local Recovery Update: November 3**

The White House has released a new framework for the Build Back Better Act, which contains significant funding for workforce development, climate resiliency, and housing affordability, and is politically tied to the Infrastructure Investment and Jobs Act. Officials are encouraged to contact their representatives to urge them to vote yes on both bills. Additionally, the National League of Cities is hosting two American Rescue Plan Act webinars. **[Read the full update \(https://www.calcities.org/detail-pages/news/2021/11/03/guide-to-local-recovery-november-3\)](https://www.calcities.org/detail-pages/news/2021/11/03/guide-to-local-recovery-november-3)** .

## **Guide to Local Recovery Update: October 6**

The U.S. Department of the Treasury has extended the deadline for State and Local Fiscal Recovery Fund recipients to submit their first Project and Expenditure Report into early 2022. Additionally, the National League of Cities is hosting two American Rescue Plan Act webinars, including one specifically for smaller cities. **[Read the full update \(https://www.calcities.org/detail-pages/news/2021/10/06/guide-to-local-recovery-update-october-6\)](https://www.calcities.org/detail-pages/news/2021/10/06/guide-to-local-recovery-update-october-6)** .

## **Guide to Local Recovery Update: September 29**

The U.S. Department of the Treasury (<https://home.treasury.gov/policy-issues/coronavirus/assistance-for-state-local-and-tribal-governments/capital-projects-fund>) released guidance (<https://home.treasury.gov/policy-issues/coronavirus/assistance-for-state-local-and-tribal-governments/capital-projects-fund>) on the new American Rescue Plan Coronavirus Capital Projects Fund, a \$10 billion fund for states to use on broadband, digital connectivity devices, and multi-purpose community facilities that directly enable work, education, and health monitoring. The Treasury Department also announced (<https://home.treasury.gov/system/files/136/American-Rescue-Plan-Six-Month-Report.pdf>) **\$700 billion of \$1 trillion** (<https://home.treasury.gov/system/files/136/American-Rescue-Plan-Six-Month-Report.pdf>) in American Rescue Plan relief has been distributed since the bill was signed in March 2021. Additionally, a **National League of Cities report** ([https://www.nlc.org/resource/how-hard-to-fill-infrastructure-jobs-impact-building-our-future/?utm\\_campaign=Newsletter&utm\\_medium=email&utm\\_source=informz&utm\\_content=fa-newsletter-20210921&utm\\_term=text-link&\\_zs=IF31X&\\_zl=1jml2](https://www.nlc.org/resource/how-hard-to-fill-infrastructure-jobs-impact-building-our-future/?utm_campaign=Newsletter&utm_medium=email&utm_source=informz&utm_content=fa-newsletter-20210921&utm_term=text-link&_zs=IF31X&_zl=1jml2)) ([https://www.nlc.org/resource/how-hard-to-fill-infrastructure-jobs-impact-building-our-future/?utm\\_campaign=Newsletter&utm\\_medium=email&utm\\_source=informz&utm\\_content=fa-newsletter-20210921&utm\\_term=text-link&\\_zs=IF31X&\\_zl=1jml2](https://www.nlc.org/resource/how-hard-to-fill-infrastructure-jobs-impact-building-our-future/?utm_campaign=Newsletter&utm_medium=email&utm_source=informz&utm_content=fa-newsletter-20210921&utm_term=text-link&_zs=IF31X&_zl=1jml2)) found infrastructure jobs remain hard to fill. **Read the full update** (</detail-pages/news/2021/09/29/guide-to-local-recovery-update-september-29>) .

### **Guide to Local Recovery Update: September 15**

Billions of dollars in state and federal housing funding for cities were announced in the past week. Additionally, the U.S. Department of the Treasury issued an important update on the Coronavirus State and Local Fiscal Recovery Funds Final Guidance and the National League of Cities is hosting two webinars on American Rescue Plan implementation. **Read the full update** (</detail-pages/news/2021/09/15/guide-to-local-recover-update-september-15>) .

## Guide to Local Recovery Update: September 8

The U.S. Department of the Treasury recently announced seven new policies to accelerate the spending of Emergency Rental Assistance funds. Additionally, the National League of Cities is hosting two webinars in the coming week — one on municipal employee vaccine mandates and another on using American Rescue Plan Act funds to address long-standing water infrastructure needs. **[Read the full update \(/detail-pages/news/2021/09/08/guide-to-local-recovery-update-september-8\)](/detail-pages/news/2021/09/08/guide-to-local-recovery-update-september-8)**

## Guide to Local Recovery Update: August 25

The reporting deadline for the State and Local Fiscal Recovery Funds is August 31! The U.S. Department of the Treasury has **[released a video walkthrough of the treasury portal for the interim report and recovery plan](https://www.youtube.com/watch?v=umxVcfD4p1U)**

(**<https://www.youtube.com/watch?v=umxVcfD4p1U>**) . Here's a list of all the other

**[Treasury Department resources available to cities \(/detail-](/detail-pages/news/2021/08/25/guide-to-local-recovery-update-august-25?sf-lc-status=Master&sf-content-action=preview&sf-auth=kq8ePMrc8eOHtmEtsFUmn/QBFVcrrB6D+ioo1gBS8aMVxbF9GOYmvTOEbxstumDjtf3nzLiqzzarO+LBPJYC0q31SPe9JAE6eedPhdMchNw7MifRKTN/Va3OJSHEqRruXRDxxYebszzEqz6KoTz203EYsxhWUgNGQpjMocDWExmRbvtBtuKUYhj3bOcGs6b9WxRwEDsu3tzq9kOgiAQ0wMgxu5KTWzDTbMk1U/nJ9ffa6l3D6KMV4B7j5zCuRKtsaL13OdtzLTjFjyj07Lz3iP1FDyM72koNutZdv93fLND92CSCR0wgJgBQStoE243b1QwIEgFdBRKLfOY5VzaZQFgU5LFPPhI0pXsO4fWwE4lvYA6yxBDzgNGASF/TPIhBbLCgOINuF3TyfjEne095iD1+R6zsXYJ7NKAEEAA==)**

**[pages/news/2021/08/25/guide-to-local-recovery-update-august-25?sf-lc-](/detail-pages/news/2021/08/25/guide-to-local-recovery-update-august-25?sf-lc-status=Master&sf-content-action=preview&sf-auth=kq8ePMrc8eOHtmEtsFUmn/QBFVcrrB6D+ioo1gBS8aMVxbF9GOYmvTOEbxstumDjtf3nzLiqzzarO+LBPJYC0q31SPe9JAE6eedPhdMchNw7MifRKTN/Va3OJSHEqRruXRDxxYebszzEqz6KoTz203EYsxhWUgNGQpjMocDWExmRbvtBtuKUYhj3bOcGs6b9WxRwEDsu3tzq9kOgiAQ0wMgxu5KTWzDTbMk1U/nJ9ffa6l3D6KMV4B7j5zCuRKtsaL13OdtzLTjFjyj07Lz3iP1FDyM72koNutZdv93fLND92CSCR0wgJgBQStoE243b1QwIEgFdBRKLfOY5VzaZQFgU5LFPPhI0pXsO4fWwE4lvYA6yxBDzgNGASF/TPIhBbLCgOINuF3TyfjEne095iD1+R6zsXYJ7NKAEEAA==)**

**[status=Master&sf-content-action=preview&sf-](/detail-pages/news/2021/08/25/guide-to-local-recovery-update-august-25?sf-lc-status=Master&sf-content-action=preview&sf-auth=kq8ePMrc8eOHtmEtsFUmn/QBFVcrrB6D+ioo1gBS8aMVxbF9GOYmvTOEbxstumDjtf3nzLiqzzarO+LBPJYC0q31SPe9JAE6eedPhdMchNw7MifRKTN/Va3OJSHEqRruXRDxxYebszzEqz6KoTz203EYsxhWUgNGQpjMocDWExmRbvtBtuKUYhj3bOcGs6b9WxRwEDsu3tzq9kOgiAQ0wMgxu5KTWzDTbMk1U/nJ9ffa6l3D6KMV4B7j5zCuRKtsaL13OdtzLTjFjyj07Lz3iP1FDyM72koNutZdv93fLND92CSCR0wgJgBQStoE243b1QwIEgFdBRKLfOY5VzaZQFgU5LFPPhI0pXsO4fWwE4lvYA6yxBDzgNGASF/TPIhBbLCgOINuF3TyfjEne095iD1+R6zsXYJ7NKAEEAA==)**

**[auth=kq8ePMrc8eOHtmEtsFUmn/QBFVcrrB6D+ioo1gBS8aMVxbF9GOYmvTOEbxstumDjtf3nzLiqzzarO+LBPJYC0q31SPe9JAE6eedPhdMchNw7MifRKTN/Va3OJSHEqRruXRDxxYe](/detail-pages/news/2021/08/25/guide-to-local-recovery-update-august-25?sf-lc-status=Master&sf-content-action=preview&sf-auth=kq8ePMrc8eOHtmEtsFUmn/QBFVcrrB6D+ioo1gBS8aMVxbF9GOYmvTOEbxstumDjtf3nzLiqzzarO+LBPJYC0q31SPe9JAE6eedPhdMchNw7MifRKTN/Va3OJSHEqRruXRDxxYebszzEqz6KoTz203EYsxhWUgNGQpjMocDWExmRbvtBtuKUYhj3bOcGs6b9WxRwEDsu3tzq9kOgiAQ0wMgxu5KTWzDTbMk1U/nJ9ffa6l3D6KMV4B7j5zCuRKtsaL13OdtzLTjFjyj07Lz3iP1FDyM72koNutZdv93fLND92CSCR0wgJgBQStoE243b1QwIEgFdBRKLfOY5VzaZQFgU5LFPPhI0pXsO4fWwE4lvYA6yxBDzgNGASF/TPIhBbLCgOINuF3TyfjEne095iD1+R6zsXYJ7NKAEEAA==)**

**[bszzEqz6KoTz203EYsxhWUgNGQpjMocDWExmRbvtBtuKUYhj3bOcGs6b9WxRwEDsu3tz](/detail-pages/news/2021/08/25/guide-to-local-recovery-update-august-25?sf-lc-status=Master&sf-content-action=preview&sf-auth=kq8ePMrc8eOHtmEtsFUmn/QBFVcrrB6D+ioo1gBS8aMVxbF9GOYmvTOEbxstumDjtf3nzLiqzzarO+LBPJYC0q31SPe9JAE6eedPhdMchNw7MifRKTN/Va3OJSHEqRruXRDxxYebszzEqz6KoTz203EYsxhWUgNGQpjMocDWExmRbvtBtuKUYhj3bOcGs6b9WxRwEDsu3tzq9kOgiAQ0wMgxu5KTWzDTbMk1U/nJ9ffa6l3D6KMV4B7j5zCuRKtsaL13OdtzLTjFjyj07Lz3iP1FDyM72koNutZdv93fLND92CSCR0wgJgBQStoE243b1QwIEgFdBRKLfOY5VzaZQFgU5LFPPhI0pXsO4fWwE4lvYA6yxBDzgNGASF/TPIhBbLCgOINuF3TyfjEne095iD1+R6zsXYJ7NKAEEAA==)**

**[q9kOgiAQ0wMgxu5KTWzDTbMk1U/nJ9ffa6l3D6KMV4B7j5zCuRKtsaL13OdtzLTjFjyj07Lz3i](/detail-pages/news/2021/08/25/guide-to-local-recovery-update-august-25?sf-lc-status=Master&sf-content-action=preview&sf-auth=kq8ePMrc8eOHtmEtsFUmn/QBFVcrrB6D+ioo1gBS8aMVxbF9GOYmvTOEbxstumDjtf3nzLiqzzarO+LBPJYC0q31SPe9JAE6eedPhdMchNw7MifRKTN/Va3OJSHEqRruXRDxxYebszzEqz6KoTz203EYsxhWUgNGQpjMocDWExmRbvtBtuKUYhj3bOcGs6b9WxRwEDsu3tzq9kOgiAQ0wMgxu5KTWzDTbMk1U/nJ9ffa6l3D6KMV4B7j5zCuRKtsaL13OdtzLTjFjyj07Lz3iP1FDyM72koNutZdv93fLND92CSCR0wgJgBQStoE243b1QwIEgFdBRKLfOY5VzaZQFgU5LFPPhI0pXsO4fWwE4lvYA6yxBDzgNGASF/TPIhBbLCgOINuF3TyfjEne095iD1+R6zsXYJ7NKAEEAA==)**

**[P1FDyM72koNutZdv93fLND92CSCR0wgJgBQStoE243b1QwIEgFdBRKLfOY5VzaZQFgU5](/detail-pages/news/2021/08/25/guide-to-local-recovery-update-august-25?sf-lc-status=Master&sf-content-action=preview&sf-auth=kq8ePMrc8eOHtmEtsFUmn/QBFVcrrB6D+ioo1gBS8aMVxbF9GOYmvTOEbxstumDjtf3nzLiqzzarO+LBPJYC0q31SPe9JAE6eedPhdMchNw7MifRKTN/Va3OJSHEqRruXRDxxYebszzEqz6KoTz203EYsxhWUgNGQpjMocDWExmRbvtBtuKUYhj3bOcGs6b9WxRwEDsu3tzq9kOgiAQ0wMgxu5KTWzDTbMk1U/nJ9ffa6l3D6KMV4B7j5zCuRKtsaL13OdtzLTjFjyj07Lz3iP1FDyM72koNutZdv93fLND92CSCR0wgJgBQStoE243b1QwIEgFdBRKLfOY5VzaZQFgU5LFPPhI0pXsO4fWwE4lvYA6yxBDzgNGASF/TPIhBbLCgOINuF3TyfjEne095iD1+R6zsXYJ7NKAEEAA==)**

**[LFPPhI0pXsO4fWwE4lvYA6yxBDzgNGASF/TPIhBbLCgOINuF3TyfjEne095iD1+R6zsXYJ7N](/detail-pages/news/2021/08/25/guide-to-local-recovery-update-august-25?sf-lc-status=Master&sf-content-action=preview&sf-auth=kq8ePMrc8eOHtmEtsFUmn/QBFVcrrB6D+ioo1gBS8aMVxbF9GOYmvTOEbxstumDjtf3nzLiqzzarO+LBPJYC0q31SPe9JAE6eedPhdMchNw7MifRKTN/Va3OJSHEqRruXRDxxYebszzEqz6KoTz203EYsxhWUgNGQpjMocDWExmRbvtBtuKUYhj3bOcGs6b9WxRwEDsu3tzq9kOgiAQ0wMgxu5KTWzDTbMk1U/nJ9ffa6l3D6KMV4B7j5zCuRKtsaL13OdtzLTjFjyj07Lz3iP1FDyM72koNutZdv93fLND92CSCR0wgJgBQStoE243b1QwIEgFdBRKLfOY5VzaZQFgU5LFPPhI0pXsO4fWwE4lvYA6yxBDzgNGASF/TPIhBbLCgOINuF3TyfjEne095iD1+R6zsXYJ7NKAEEAA==)**

**[KAEEAA==](/detail-pages/news/2021/08/25/guide-to-local-recovery-update-august-25?sf-lc-status=Master&sf-content-action=preview&sf-auth=kq8ePMrc8eOHtmEtsFUmn/QBFVcrrB6D+ioo1gBS8aMVxbF9GOYmvTOEbxstumDjtf3nzLiqzzarO+LBPJYC0q31SPe9JAE6eedPhdMchNw7MifRKTN/Va3OJSHEqRruXRDxxYebszzEqz6KoTz203EYsxhWUgNGQpjMocDWExmRbvtBtuKUYhj3bOcGs6b9WxRwEDsu3tzq9kOgiAQ0wMgxu5KTWzDTbMk1U/nJ9ffa6l3D6KMV4B7j5zCuRKtsaL13OdtzLTjFjyj07Lz3iP1FDyM72koNutZdv93fLND92CSCR0wgJgBQStoE243b1QwIEgFdBRKLfOY5VzaZQFgU5LFPPhI0pXsO4fWwE4lvYA6yxBDzgNGASF/TPIhBbLCgOINuF3TyfjEne095iD1+R6zsXYJ7NKAEEAA==)**

**[\)](/detail-pages/news/2021/08/25/guide-to-local-recovery-update-august-25?sf-lc-status=Master&sf-content-action=preview&sf-auth=kq8ePMrc8eOHtmEtsFUmn/QBFVcrrB6D+ioo1gBS8aMVxbF9GOYmvTOEbxstumDjtf3nzLiqzzarO+LBPJYC0q31SPe9JAE6eedPhdMchNw7MifRKTN/Va3OJSHEqRruXRDxxYebszzEqz6KoTz203EYsxhWUgNGQpjMocDWExmRbvtBtuKUYhj3bOcGs6b9WxRwEDsu3tzq9kOgiAQ0wMgxu5KTWzDTbMk1U/nJ9ffa6l3D6KMV4B7j5zCuRKtsaL13OdtzLTjFjyj07Lz3iP1FDyM72koNutZdv93fLND92CSCR0wgJgBQStoE243b1QwIEgFdBRKLfOY5VzaZQFgU5LFPPhI0pXsO4fWwE4lvYA6yxBDzgNGASF/TPIhBbLCgOINuF3TyfjEne095iD1+R6zsXYJ7NKAEEAA==)** .

## Guide to Local Recovery Update: August 18

The Federal Emergency Management Agency announced yesterday that it will continue to reimburse local governments for Project Roomkey costs through the rest of the year. Additionally, the United States Department of Agriculture recently made up to \$500 million in grants available to rural communities to help expand access to COVID-19 vaccines and healthcare services. Lastly, the National League of Cities will hold a webinar on how cities can use American Rescue Plan

funds to support small businesses and entrepreneurs. **[Read the full update \(/detail-pages/news/2021/08/18/guide-to-local-recovery-update-august-18\)](/detail-pages/news/2021/08/18/guide-to-local-recovery-update-august-18)** .

### **Guide to Local Recovery Update: August 11**

This week in Guide to Local Recovery: The U.S. Senate passed the Infrastructure Investment and Jobs Act, a significant step forward on \$550 billion in new federal infrastructure investments; the League of California Cities submitted a support letter for Senator Alex Padilla's Amendment #2584. New resources are available for cities as well, including new information about the Coronavirus State and Local Fiscal Recovery Funds recipient reporting portal. **[Read the full update \(/detail-pages/news/2021/08/11/guide-to-local-recovery-update-august-11\)](/detail-pages/news/2021/08/11/guide-to-local-recovery-update-august-11)** .

### **Guide to Local Recovery Update: August 4**

City leaders are encouraged to join the League of California Cities in urging Congress to pass the Infrastructure Investment and Jobs Act, a comprehensive infrastructure package; and a number of webinars are available this month on how cities can utilize American Rescue Plan funds to advance equity in their communities. **[Read the full update \(/detail-pages/news/2021/08/04/guide-to-local-recovery-update-august-4\)](/detail-pages/news/2021/08/04/guide-to-local-recovery-update-august-4)** .

### **Guide to Local Recovery Update: July 28**

Cal Cities, along with 400 other city officials and organizations, signed a letter about the need for federal infrastructure funding. Written by the National League of Cities (NLC), the letter urged Congressional leadership to pass a comprehensive infrastructure package and outlined the top priorities of local governments. City officials are encouraged to sign a similar letter to their congressional delegation. Cal Cities also released an updated version of its American Rescue Plan Act revenue loss calculators, which includes minor changes based on member feedback. Additional resources, such as NLC's list of **[\(https://www.nlc.org/covid-19-pandemic-response/arp-local-relief-frequently-asked-questions/\)](https://www.nlc.org/covid-19-pandemic-response/arp-local-relief-frequently-asked-questions/)** **[FAQs from city officials about the \(https://www.nlc.org/covid-19-](https://www.nlc.org/covid-19-)**

[pandemic-response/arp-local-relief-frequently-asked-questions/](#)) Coronavirus State and Local Fiscal Recovery Funds, are available as well. [Read the full update. \(/detail-pages/news/2021/07/28/guide-to-local-recovery-update-july-28\)](#)

## **Guide to Local Recovery Update: July 21**

The League of California's strong support of SB 156 paid off, with Governor Newsom signing the [\(https://www.gov.ca.gov/2021/07/20/governor-newsom-signs-historic-broadband-legislation-to-help-bridge-digital-divide/\)](https://www.gov.ca.gov/2021/07/20/governor-newsom-signs-historic-broadband-legislation-to-help-bridge-digital-divide/) **historic broadband legislation** [\(https://www.gov.ca.gov/2021/07/20/governor-newsom-signs-historic-broadband-legislation-to-help-bridge-digital-divide/\)](https://www.gov.ca.gov/2021/07/20/governor-newsom-signs-historic-broadband-legislation-to-help-bridge-digital-divide/) on Tuesday. The \$6 billion investment — \$5.2 billion from federal dollars — is designed to bridge the digital divide and ensure equitable digital access to underserved and unserved communities. A general overview of SB 156 can be found on Cal Cities' [website](#) [\(/detail-pages/news/2021/07/15/state-passes-historic-6-billion-broadband-investment-agreement\)](#) .

Cal Cities also submitted comments about the Coronavirus Local Fiscal Recovery Fund [\(/https://www.regulations.gov/document/TREAS-DO-2021-0008-0002/comment\)](https://www.regulations.gov/document/TREAS-DO-2021-0008-0002/comment) **Interim Final Rule** [\(/https://www.regulations.gov/document/TREAS-DO-2021-0008-0002/comment\)](https://www.regulations.gov/document/TREAS-DO-2021-0008-0002/comment) to the U.S. Department of the Treasury. Cal Cities requested further clarity, guidance, and flexibility for local governments on issues such as public health, economic impact, and infrastructure. The full letter can be found on the Treasury Department's [\(/https://www.regulations.gov/comment/TREAS-DO-2021-0008-0653\)](https://www.regulations.gov/comment/TREAS-DO-2021-0008-0653) **website** [\(/https://www.regulations.gov/comment/TREAS-DO-2021-0008-0653\)](https://www.regulations.gov/comment/TREAS-DO-2021-0008-0653) .

Finally, the Treasury Department released an [\(/https://home.treasury.gov/system/files/136/SLFRPFAQ.pdf\)](https://home.treasury.gov/system/files/136/SLFRPFAQ.pdf) **updated FAQ** [\(/https://home.treasury.gov/system/files/136/SLFRPFAQ.pdf\)](https://home.treasury.gov/system/files/136/SLFRPFAQ.pdf) for **Coronavirus State and Local Fiscal Recovery Funds Interim Final Rule** [\(/https://home.treasury.gov/policy-issues/coronavirus/assistance-for-state-local-and-](https://home.treasury.gov/policy-issues/coronavirus/assistance-for-state-local-and-)



[tribal-governments/state-and-local-fiscal-recovery-funds/recipient-compliance-and-reporting-responsibilities](#)) on July 14. The update clarifies eligible uses of water, sewer, and broadband infrastructure, as well as questions about revenue loss and fund eligibility for nonprofit or private organizations.

### **Guide to Local Recovery Update: July 15**

The U.S. Department of the Treasury has released several resources on its Compliance and Reporting Guidance for Coronavirus State and Local Fiscal Recovery Funds (SLFRF) recipients. Additionally, several recovery-related webinars are available later this month, including a Government Service Administration Procurement training. Lastly, the deadline to submit comments and recommendations to the Treasury Department on the Interim Final Rule is on July 16. [Read the full update. \(/detail-pages/news/2021/07/15/guide-to-local-recovery-update-july-15\)](#)

### **Guide to Local Recovery update: July 7**

The National League of Cities (NLC) will host a two-day conference on July 8-9 in collaboration with NLC's Race, Equity and Leadership (REAL) department. More than just a public health crisis, the coronavirus pandemic has revealed and exacerbated racial inequities prevalent in our communities. This conference will consist of discussions and workshops centered around building equitable community leadership and will be followed by a panel of conference speakers.

NLC will also host a virtual event about how the American Rescue Plan Act (ARPA) can be used to support inclusive economic recovery. The event, Utilizing ARPA Funding to Advance Cooperative Business Ownership, will be held on July 27. With community wellness in mind, this event will cover ways in which cities can support the creation and retention of local, high quality jobs to help ensure an equitable rebuilding of local economies and communities.

### **Guide to Local Recovery update: June 30**



[4cb7ee43f125&-4cb7ee43f1256d-4cb7ee43f125&\) \(3c6d0f04-c4c9-420f-a16d-4cb7ee43f1256d-4cb7ee43f125&-4cb7ee43f1256d-4cb7ee43f125&\) Revenue Loss Calculator \(Government-wide – Full Accrual\) \(3c6d0f04-c4c9-420f-a16d-4cb7ee43f1256d-4cb7ee43f125&-4cb7ee43f1256d-4cb7ee43f125&\)](#)

- [\(436bd839-6143-448f-82cb-3f8c06dd5aa4cb-3f8c06dd5aa4&-3f8c06dd5aa4cb-3f8c06dd5aa4&\) Revenue Loss Calculator \(Fund Basis – Modified Accrual\) \(436bd839-6143-448f-82cb-3f8c06dd5aa4cb-3f8c06dd5aa4&-3f8c06dd5aa4cb-3f8c06dd5aa4&\)](#)

The calculator will be updated and improve as Treasury Department guidance evolves. Cities will be able to calculate revenue at multiple points throughout the program. [Read the full update. \(/detail-pages/news/2021/06/16/guide-to-local-recovery-update-june-16\)](#)

### **Guide to Local Recovery Update: June 11**

Gov. Gavin Newsom took [executive action \(https://www.gov.ca.gov/wp-content/uploads/2021/06/6.11.21-EO-N-07-21-signed.pdf\)](https://www.gov.ca.gov/wp-content/uploads/2021/06/6.11.21-EO-N-07-21-signed.pdf) on June 11 to terminate the state’s stay-at-home order and tiered Blueprint for Safer Economy. Measures that were included in the blueprint to protect public health, such as physical distancing, capacity limits, and the county tier system, terminate on June 15. The Governor also [issued an executive order \(https://www.gov.ca.gov/wp-content/uploads/2021/06/6.11.21-EO-N-08-21-signed.pdf\)](https://www.gov.ca.gov/wp-content/uploads/2021/06/6.11.21-EO-N-08-21-signed.pdf) to begin the “winding down” of the 58 executive orders that have been implemented since the beginning of the pandemic. The provisions will sunset in phases, beginning later this month through September.

**The California Department of Finance (DOF) American Rescue Plan Request for Funds Portal for non-entitlement cities is [now live.](#)** (<https://esd.dof.ca.gov/recovery-fund/login>) Cities [categorized as non-entitlement cities \(https://www.dof.ca.gov/budget/COVID-19/Small%20City%20Allocations%20-%20ARPA/CFRF%20Allocation%20Schedule.pdf\)](#) (NEU) must access this portal to

receive their first tranche of funds. All applications are due no later than 11:59 p.m. on June 23, 2021. DOF discussed the funding portal with city officials during a League of California Cities webinar earlier this week. The webinar included a robust Q & A and is **available for review** ([https://youtu.be/ZW0GcVks\\_2I](https://youtu.be/ZW0GcVks_2I)), along with the presentation slides. **Read the full update.** (</detail-pages/news/2021/06/14/guide-to-local-recovery-update-june-11>)

### **Guide to Local Recovery Update: June 9**

The California Department of Finance (DOF) unveiled its **American Rescue Plan Local Fiscal Recovery Fund webpage** ([https://www.dof.ca.gov/budget/COVID-19/Local\\_Fiscal\\_Recovery\\_Fund\\_Allocations/](https://www.dof.ca.gov/budget/COVID-19/Local_Fiscal_Recovery_Fund_Allocations/)) for non-entitlement cities and discussed the upcoming funding portal with city officials during a League of California Cities webinar earlier today. The program covered the state's responsibilities, eligible usages, the application and distribution process, reporting requirements, and the portal itself. The webinar included a robust Q & A and is **available for review** ([https://youtu.be/ZW0GcVks\\_2I](https://youtu.be/ZW0GcVks_2I)), along with the presentation slides. **Read the full update** (</detail-pages/news/2021/06/09/guide-to-local-recovery-update-june-9>)

### **Guide to Local Recovery Update: June 2**

The California Department of Finance (DOF) has released the Coronavirus Local Fiscal Recovery Fund allocations for non-entitlement cities, and is preparing to distribute over \$1.2 billion in American Rescue Plan payments to 291 California non-entitlement cities. **Register now** ([https://zoom.us/webinar/register/WN\\_Sn0LI8JfRnWdrVYeYRaJ-w](https://zoom.us/webinar/register/WN_Sn0LI8JfRnWdrVYeYRaJ-w)) for the next Guide to Local Recovery webinar on June 9 from 9:30-10:30 a.m., where experts from DOF will provide information about how cities can navigate the state's submission portal, when cities can expect funding, as well as answer any general American Rescue Plan questions.

### **Guide to Local Recovery Update: May 26**

Earlier this week, the U.S. Department of the Treasury released guidance on the

distribution of Coronavirus State and Local Fiscal Recovery Funds to non-entitlement cities. These guidelines were issued to assist the California Department of Finance (DOF) in issuing final city-by-city allocations and to help develop the process for distributing non-entitlement city funds. The League of California Cities has been in communication with DOF to determine the timing of the release of the final allocations and the distribution process, and will be hosting a webinar with DOF in the coming weeks. [Read the full update. \(/detail-pages/news/2021/05/26/guide-to-local-recovery-update-may-26\)](#)

### **Guide to Local Recovery Update: May 19**

The U.S. Department of the Treasury has launched its own American Rescue Plan information hub, which includes a Fiscal Recovery Funds FAQ and the interim final rule. The FAQ will be updated periodically in response to stakeholder questions. The White House and the Treasury Department will also address the interim rule during an NLC-hosted webinar and Q & A on May 20 at 1 p.m. PST. We also hosted a webinar on the American Rescue Plan for more than 400 city officials today. Representatives from the National League of Cities discussed eligible uses for entitlement cities. The webinar [recording \(https://zoom.us/rec/share/8X\\_MvknJY-6i6vAnjQy2XOHhwwkI7x7IaF1Ztybv8-jM3Op8Tu7saXtS0plpi6OHM.4lv\\_VGB8Q8W-Q0LA\)](#) and slides are available for those who missed it. [Read the full update \(/detail-pages/news/2021/05/19/guide-to-local-recovery-update-may-19\)](#)

### **Guide to Local Recovery Update: May 12**

The portal for local governments that will receive their money directly from the U.S. Department of the Treasury is now live. This [portal \(https://home.treasury.gov/policy-issues/coronavirus/assistance-for-state-local-and-tribal-governments/state-and-local-fiscal-recovery-fund/request-funding\)](#) is for cities classified as Metropolitan Cities under the American Rescue Plan. Local governments designated as non-entitlement units are also eligible to receive Coronavirus State and Local Fiscal Recovery Funds, as provided in the American Rescue Plan. However, they will receive this funding from their

applicable state government, not through this link. [Read the full update \(/detail-pages/news/2021/05/12/guide-to-local-recovery-update-may-12\)](#)

### **Guide to Local Recovery Update: May 10**

The U.S. Department of the Treasury released guidance May 10 on the distribution of \$8 billion for California cities in the American Rescue Plan Act. To learn more, sign up for Cal Cities Legislative Action Days May 13, where Cal Cities will provide an overview of the new guidance. Be sure to check the new resources added to the Federal Guidance and Resources tab below to read the new guidelines and access the final city-by-city allocations.

U.S. Department of the Treasury now has a [website](#) (<http://www.treasury.gov/coronavirus>) where people can learn more about COVID-19 economic relief, programs, and assistance for state, local, and tribal governments.

### **The [California COVID-19 Rent Relief program](#)**

([https://housing.ca.gov/covid\\_rr/index.html](https://housing.ca.gov/covid_rr/index.html)) has funds to distribute, and is urging California city governments to share this resource with impacted individuals in their communities. Landlords who participate in the program can get reimbursed for 80 percent of an eligible renter's unpaid rent, and eligible renters whose landlords choose not to participate in the program may apply on their own and receive 25 percent of unpaid rent between April 1, 2020 and March 31, 2021. Paying 25 percent by June 30, 2021 can help keep the tenant in their home under the extended eviction protections in [SB 91](#)

([https://leginfo.legislature.ca.gov/faces/billNavClient.xhtml?bill\\_id=202120220SB91](https://leginfo.legislature.ca.gov/faces/billNavClient.xhtml?bill_id=202120220SB91)) (2021). Visit the [Housing is Key website](#) ([https://housing.ca.gov/covid\\_rr/index.html](https://housing.ca.gov/covid_rr/index.html)) to learn more.

### **Guide to Local Recovery Update: May 5**

U.S. Department of the Treasury now has a [website](#) (<http://www.treasury.gov/coronavirus>) where people can learn more about COVID-19 economic relief, programs, and assistance for state, local, and tribal

governments. The **California COVID-19 Rent Relief program** ([https://housing.ca.gov/covid\\_rr/index.html](https://housing.ca.gov/covid_rr/index.html)) has funds to distribute, and is urging California city governments to share this resource with impacted individuals in their communities. Landlords who participate in the program can get reimbursed for 80 percent of an eligible renter's unpaid rent, and eligible renters whose landlords choose not to participate in the program may apply on their own and receive 25 percent of unpaid rent between April 1, 2020 and March 31, 2021. Paying 25 percent by June 30, 2021 can help keep the tenant in their home under the extended eviction protections in **SB 91** ([https://leginfo.legislature.ca.gov/faces/billNavClient.xhtml?bill\\_id=202120220SB91](https://leginfo.legislature.ca.gov/faces/billNavClient.xhtml?bill_id=202120220SB91)) (2021). Visit the **Housing is Key website** ([https://housing.ca.gov/covid\\_rr/index.html](https://housing.ca.gov/covid_rr/index.html)) to learn more.

### **Guide to Local Recovery Update: April 28**

Today, the League of California Cities hosted the latest installment of its new Guide to Local Recovery webinar series, focused on Federal Emergency Management Agency (FEMA) cost reimbursement for eligible programs and services under FEMA's Public Assistance Program. The webinar featured leaders with representatives from FEMA and the California Office of Emergency Services (Cal OES) to provide an opportunity to ask questions and get clarity on reimbursable costs. The webinar **recording** ([https://zoom.us/rec/play/Hr64SUkw\\_ADOU5c4eD\\_0W573umzGJEwUplpo5-ZQ\\_LmMthSB6H\\_fERcXF8rSHWWe2RgwGWofjyWYRbVH.3qn24fnZHWgrAsiG](https://zoom.us/rec/play/Hr64SUkw_ADOU5c4eD_0W573umzGJEwUplpo5-ZQ_LmMthSB6H_fERcXF8rSHWWe2RgwGWofjyWYRbVH.3qn24fnZHWgrAsiG)) and slides are available online. Next week, the White House is hosting regional briefings on the **American Jobs Plan** (<https://www.whitehouse.gov/briefing-room/statements-releases/2021/03/31/fact-sheet-the-american-jobs-plan/>) and **American Families Plan** (<https://www.whitehouse.gov/briefing-room/statements-releases/2021/04/28/fact-sheet-the-american-families-plan/>), and the briefing for California is Monday, May 3 at 2 p.m. All cities are invited to attend, and the briefing will be hosted by Daniel Hornung, special assistant to the

president for Economic Policy. **Register** (<https://pitc.zoomgov.com/j/1603766325?pwd=SUtrWVRnajJyWmg5QTg3V01iTTRSUT09>) for the briefing.

### **Guide to Local Recovery Update: April 21**

The U.S. Department of the Treasury has **released new steps** (<https://home.treasury.gov/policy-issues/coronavirus/assistance-for-state-local-and-tribal-governments/state-and-local-fiscal-recovery-fund>) that all cities need to take to receive their city allocation under the local relief included in the American Rescue Plan. The rescue plan was signed into law in March 2021, and includes \$65 billion in much-needed direct and flexible relief for every city in the country, with an anticipated \$8.3 billion for California cities. While the Treasury Department has not released the final city allocations, you can find city-by-city estimates on the National League of Cities **website** (<https://www.nlc.org/resource/estimated-local-allocations-in-the-american-rescue-plan/>) . **Read the full update.** (</detail-pages/news/2021/04/21/guide-to-local-recovery-update-april-21>)

### **Guide to Local Recovery Update: April 14**

The U.S. Department of Transportation (DOT) published this week a **Notice of Funding Opportunity** (<https://www.transportation.gov/sites/dot.gov/files/2021-04/FY%202021%20RAISE%20grants%20NOFO%20%28Final%29.pdf>) to apply for \$1 billion in Fiscal Year (FY) 2021 discretionary grant funding through the Rebuilding American Infrastructure with Sustainability and Equity (RAISE) grants. Projects for RAISE funding will be evaluated based on merit criteria that include safety, environmental sustainability, quality of life, economic competitiveness, state of good repair, innovation, and partnership. Within these criteria, the Department will prioritize projects that can demonstrate improvements to racial equity, reduce impacts of climate change, and create good-paying jobs. To provide technical assistance to prospective applicants, DOT is hosting a **series of webinars** (<http://www.transportation.gov/RAISEgrants/outreach>) during the FY 2021 RAISE grant application process. The deadline to submit an application is July 12, 2021 at 5 p.m. EST. On April 12, the White House released state-by-state fact sheets



that highlight the urgent need in every state across the country for the investments outlined in the new federal infrastructure proposal. The fact sheet for California can be found on the [White House website \(https://whitehouse.us10.list-manage.com/track/click?u=f620288bb41dd81f9c715ef4d&id=74d04bf158&e=d97cf1e38b\)](https://whitehouse.us10.list-manage.com/track/click?u=f620288bb41dd81f9c715ef4d&id=74d04bf158&e=d97cf1e38b)

### **Guide to Local recovery update: April 7**

As cities await final guidance from the U.S. Department of the Treasury on the allocation amounts and reporting process for the local relief included in the American Rescue Plan, now is the time for cities to begin identifying their priorities and developing a system to track and report the funds. The sooner priorities for local recovery are identified, the faster people can get back to work, operations can be stabilized, and those most impacted by COVID-19 can receive support. The National League of Cities [frequently asked questions \(https://www.nlc.org/resource/arp-local-relief-frequently-asked-questions/?utm\\_campaign=Newsletter&utm\\_medium=email&utm\\_source=informz&utm\\_content=fact-sheet-20210403&utm\\_term=text-resource&\\_zs=vJKfb&\\_zl=awIV2\)](https://www.nlc.org/resource/arp-local-relief-frequently-asked-questions/?utm_campaign=Newsletter&utm_medium=email&utm_source=informz&utm_content=fact-sheet-20210403&utm_term=text-resource&_zs=vJKfb&_zl=awIV2) about the American Rescue Plan local relief can help cities prepare while we await official guidance.

### **Guide to Local Recovery Update: March 31**

The Biden Administration announced [a federal infrastructure plan \(https://www.whitehouse.gov/briefing-room/statements-releases/2021/03/31/fact-sheet-the-american-jobs-plan/\)](https://www.whitehouse.gov/briefing-room/statements-releases/2021/03/31/fact-sheet-the-american-jobs-plan/), which outlines more than \$2 trillion in federal investments to rebuild and expand infrastructure in our cities and towns across the nation. Cal Cities is encouraged by the proposal, as repairing and modernizing aging infrastructure is key to economic recovery and more jobs in our cities and nation. We look forward to sharing more details on the plan as they become available.

### **Local recovery update: March 24**

The passage of the historic American Rescue Plan means over \$65 billion will be

delivered directly to cities of all size. Now the real work begins. What are your local priorities for this funding? The National League of Cities (NLC) is conducting a short survey to gauge how conditions, from the economy and infrastructure to housing and education, have changed this past year, and how new funding will be used to address these challenges. The results will be part of NLC's research efforts to showcase local leadership during the pandemic. They will also shape the type of strategies and programs NLC is developing to help communities leverage newly available funds. Make your voice count and participate in the survey! Please respond no later than Tuesday, March 30.

### **Guide to Local Recovery Update: March 17**

As city officials begin to put the unprecedented local relief from the American Rescue Plan into action to continue critical services and jumpstart recovery in their communities, Cal Cities is here to answer questions and support your efforts with tools and resources. For more information on the American Rescue Plan and what's in it for cities, read Cal Cities Executive Director and CEO Carolyn Coleman's message to city officials. and review the Cal Cities **[special briefing](https://zoom.us/rec/play/SEjtz_yS_jtL4PLawym8kaF9JloYBHE0Y3e_fJztHZtxKIUz3cZ5JwBRQap51gnVeg7bh_xKvrW6cM-6.2P_bfCjF1VI5KPRV?autoplay=true)** ([https://zoom.us/rec/play/SEjtz\\_yS\\_jtL4PLawym8kaF9JloYBHE0Y3e\\_fJztHZtxKIUz3cZ5JwBRQap51gnVeg7bh\\_xKvrW6cM-6.2P\\_bfCjF1VI5KPRV?autoplay=true](https://zoom.us/rec/play/SEjtz_yS_jtL4PLawym8kaF9JloYBHE0Y3e_fJztHZtxKIUz3cZ5JwBRQap51gnVeg7bh_xKvrW6cM-6.2P_bfCjF1VI5KPRV?autoplay=true)) for city officials. The National League of Cities has provided an American Rescue Plan **[implementation update](https://www.nlc.org/article/2021/03/12/everything-you-need-to-know-about-covid-relief/?utm_campaign=Federal-Advocacy&utm_medium=email&utm_source=informz&utm_content=federal-advocacy-covid-relief-weekly-20210316&utm_term=image-featured&_zs=Sq77a&_zl=9W8U2)** ([https://www.nlc.org/article/2021/03/12/everything-you-need-to-know-about-covid-relief/?utm\\_campaign=Federal-Advocacy&utm\\_medium=email&utm\\_source=informz&utm\\_content=federal-advocacy-covid-relief-weekly-20210316&utm\\_term=image-featured&\\_zs=Sq77a&\\_zl=9W8U2](https://www.nlc.org/article/2021/03/12/everything-you-need-to-know-about-covid-relief/?utm_campaign=Federal-Advocacy&utm_medium=email&utm_source=informz&utm_content=federal-advocacy-covid-relief-weekly-20210316&utm_term=image-featured&_zs=Sq77a&_zl=9W8U2)), which includes the latest on recovery priorities, relief funds, and bill summaries. Also, the White House has created a **[fact sheet](https://www.whitehouse.gov/wp-content/uploads/2021/03/American-Rescue-Plan-Fact-Sheet.pdf)** (<https://www.whitehouse.gov/wp-content/uploads/2021/03/American-Rescue-Plan-Fact-Sheet.pdf>) for the American Rescue Plan, as well as a **[summary of its impact on California](https://www.whitehouse.gov/wp-content/uploads/2021/03/ARP-State-Fact-Sheet-CA.pdf)** (<https://www.whitehouse.gov/wp-content/uploads/2021/03/ARP-State-Fact-Sheet-CA.pdf>). These are first of many resources in our guide to local recovery that we will be offering in the coming weeks and months.